

# Vacation rental Kasterlee Country House



**Country House**, detached, 1 floor,  
separate entrance, in(on) a(an) Private  
property

Setting : bucolic, agricultural

Capacity : from 1 to 20 person(s)

Bedroom(s) : 6

Kasterlee - Province of Antwerp - Flanders

Belgium

Reservation : +32 (0) 14852077 (Belgium)

Advert No. 12117

www.iha.com



### Vacation rental



Country House, detached, 1 floor, separate entrance, in(on) a(an) Private property

- **Ideal for all age groups, large families**
- **View :** not overlooked, country side, farmland, prairie, forest, village
- **Setting :** bucolic, agricultural

### Assets

- **Parking :**  
Covered parking : 1 carport. Parking uncovered : 6 internal.
- **baby equipment :**  
High chair



façade

### Surroundings & location



Countryside Golf Horse riding Fishing



Culture

### Leisure

- **Leisure activities less than 12 miles :**

Ice-skating, bathing, pedalo, snorkelling, scuba diving, water skiing, surfing, windsurfing, sailing, canoeing, tennis, squash, riding school, pony club, pathway/broadwalk, coastal/forest paths, hiking, rappel, airships, glider (club), boat trips, horse-drawn carriage, horse trekking, mini-golf, ATV/Quad Bike, go-karting, ten-pin bowling, basketball, volleyball, fishing

- **Supervised :**

Sailing school, tennis school, riding school

- **Attractions and relaxation :**

Bar/pub, discotheque, restaurant, movie theater, park and garden, leisure park, zoo/animal park, exhibition center, art gallery, historical site, museum, theater, festivals, antiques & bric-a-brac, cellar and wine tasting, casino, sauna, steam baths, health spa, beauticians, fitness center, Bio farm

### Surroundings

- **Locality :**

Public swimming pool 1.25mi.  
Public tennis court 1.25mi.  
9 hole golf course 6mi.  
Windsurfing spots 0.62mi.  
Watersports centre 4.5mi.  
River 0.62mi.  
Forest <165'

- **Amenities :**

Village center 1.25mi.  
Downtown 4.5mi.  
Bus stop / bus station 1.25mi.  
Bike/mountain bike hire 1.25mi.  
Scooter/motorbike hire 1.25mi.  
Breadstore 1.25mi.  
Caterer 1.25mi.  
Local stores 1.25mi.  
Supermarket 1.25mi.  
High class retailers 4.5mi.  
Hairdressing salon 1.25mi.  
Internet cafe 1.25mi.  
Mail office 1.25mi.  
Bank 1.25mi.  
ATM 1.25mi.  
Drugstore 1.25mi.  
Doctor 1.25mi.  
Hospital 4.5mi.



tv den



Single family home



tv den

### Interior

- **Receive up to :**  
from 1 to 20 person(s) (18 adults, 2 kids)
- **Liveable floor area :**  
2,150 Sq.ft.
- **Interior layout :**  
6 bedroom(s), sleeping den, 1 bathroom, 1 shower room, 2 toilets, living room, sitting room, separate kitchen, dining room, dining area, tv den
- **Sleeps - bed(s) :**  
18 twin bed(s), 2 baby cradle
- **Guest facilities :**  
T.V., hi-fi system, vcr, board games, t.v points, wardrobe, Hanging wardrobe, power shower, fly screens, central heating, wood-burning stove, skylights, Drapes, Double glazed
- **Appliances :**  
Crockery/flatware, kitchen utensils, cafetiere, electric coffee maker, electric kettle, gaz stove, oven, micro-wave oven, extractor hood, refridgerator, deep freeze, dish washer, vacuum cleaner

### Exterior

- **Ground surface :**  
0.25 acre.
- **Outside accommodation :**  
Terrace, covered terrace, sundeck
- **Outside setting :**  
Enclosed grounds, yard, lawn, wooded park, woody, pinewood, kitchen garden
- **Outside amenities :**  
Pizza oven, BBQ, yard table(s), 30 yard seat (s), trolley on wheels, parasol, yard seated area, 5 sun recliner(s)



kitchen

### Services

- **washing :**  
Sheets supplement, Comforter(s), Pillows
- **Single family home :**  
Cleaning on departure supplement (+\$88\*), Yard/swimming pool maintenance, Snow clearance

### For your guidance

- **For your guidance**  
Kids welcome  
Pets friendly  
Cell phone network coverage, personal transport advisable  
Water : hot/cold  
Local voltage supply : 220-240V / 50Hz  
Electricity supply : mains
- **Handicapped people welcome**  
Wheelchair access  
Fitted out for the disabled : mobility, visually impaired, hard of hearing, mentally



Interior layout



Photo album - 1



façade



Single family home



tv den



tv den



Interior layout



Photo album - 2



kitchen



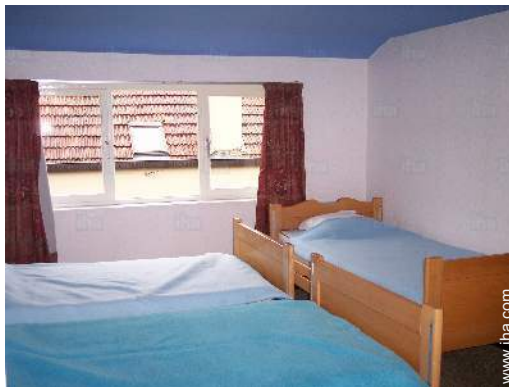
Kitchen Area



bedroom



bedroom



bedroom



bathroom



Parking



lawn



### Location



### Location & Access



GPS coordinates in degrees, minutes, seconds: Latitude 51°14'52"N - Longitude 4°56'42"E (Dwelling)

#### Address

→ Hoge Rielen 22  
2460 Kasterlee

#### • Freeway (exit) Afrit 24

→ Kasterlee, Province of Antwerp,  
Flanders, Belgium  
→ Distance : 4.5mi.  
→ Time : 5'

#### • Railroad station Tienen

→ Kasterlee, Province of Antwerp,  
Flanders, Belgium  
→ Distance : 2.5mi.  
→ Time : 5'

- Turnhout : (6mi.)
- Herentals : (7,5mi.)
- Antwerp : (30mi.)

### Contact

Spoken languages



# Vacation rental Kasterlee - Belgium Country House

7  
[Book now](#)

## Availability calendar - from : november 2017

Nov	W	Th	F	Sa	Su	M	Tu	W	Th	F	Sa	Su	M	Tu	W	Th	F	Sa	Su	M	Tu	W	Th							
2017	1	2	3	4	5	6	7	8	9	10	11	12	13	14	15	16	17	18	19	20	21	22	23	24	25	26	27	28	29	30

Dec	F	Sa	Su	M	Tu	W	Th	F	Sa	Su	M	Tu	W	Th	F	Sa	Su	M	Tu	W	Th	F	Sa	Su							
2017	1	2	3	4	5	6	7	8	9	10	11	12	13	14	15	16	17	18	19	20	21	22	23	24	25	26	27	28	29	30	31
	-	-	-	-	-	-	-	-	-	-	-	-	-	-	-	-	-	-	-	-	-	-	-	-	-	-	-	-	-	-	

Jan	M	Tu	W	Th	F	Sa	Su	M	Tu	W	Th	F	Sa	Su	M	Tu	W	Th	F	Sa	Su	M	Tu	W							
2018	1	2	3	4	5	6	7	8	9	10	11	12	13	14	15	16	17	18	19	20	21	22	23	24	25	26	27	28	29	30	31
	-	-	-	-	-	-	-	-	-	-	-	-	-	-	-	-	-	-	-	-	-	-	-	-	-	-	-	-	-	-	

Feb	Th	F	Sa	Su	M	Tu	W	Th	F	Sa	Su	M	Tu	W	Th	F	Sa	Su	M	Tu	W								
2018	1	2	3	4	5	6	7	8	9	10	11	12	13	14	15	16	17	18	19	20	21	22	23	24	25	26	27	28	
	-	-	-	-	-	-	-	-	-	-	-	-	-	-	-	-	-	-	-	-	-	-	-	-	-	-	-	-	-

Mar	Th	F	Sa	Su	M	Tu	W	Th	F	Sa	Su	M	Tu	W	Th	F	Sa	Su	M	Tu	W	Th	F	Sa							
2018	1	2	3	4	5	6	7	8	9	10	11	12	13	14	15	16	17	18	19	20	21	22	23	24	25	26	27	28	29	30	31
	-	-	-	-	-	-	-	-	-	-	-	-	-	-	-	-	-	-	-	-	-	-	-	-	-	-	-	-	-	-	

Apr	Su	M	Tu	W	Th	F	Sa	Su	M	Tu	W	Th	F	Sa	Su	M	Tu	W	Th	F	Sa	Su	M							
2018	1	2	3	4	5	6	7	8	9	10	11	12	13	14	15	16	17	18	19	20	21	22	23	24	25	26	27	28	29	30
	-	-	-	-	-	-	-	-	-	-	-	-	-	-	-	-	-	-	-	-	-	-	-	-	-	-	-	-	-	-

May	Tu	W	Th	F	Sa	Su	M	Tu	W	Th	F	Sa	Su	M	Tu	W	Th	F	Sa	Su	M	Tu	W	Th							
2018	1	2	3	4	5	6	7	8	9	10	11	12	13	14	15	16	17	18	19	20	21	22	23	24	25	26	27	28	29	30	31
	-	-	-	-	-	-	-	-	-	-	-	-	-	-	-	-	-	-	-	-	-	-	-	-	-	-	-	-	-	-	

June	F	Sa	Su	M	Tu	W	Th	F	Sa	Su	M	Tu	W	Th	F	Sa	Su	M	Tu	W	Th	F	Sa							
2018	1	2	3	4	5	6	7	8	9	10	11	12	13	14	15	16	17	18	19	20	21	22	23	24	25	26	27	28	29	30
	-	-	-	-	-	-	-	-	-	-	-	-	-	-	-	-	-	-	-	-	-	-	-	-	-	-	-	-	-	-

Jul	Su	M	Tu	W	Th	F	Sa	Su	M	Tu	W	Th	F	Sa	Su	M	Tu	W	Th	F	Sa	Su	M	Tu							
2018	1	2	3	4	5	6	7	8	9	10	11	12	13	14	15	16	17	18	19	20	21	22	23	24	25	26	27	28	29	30	31
	-	-	-	-	-	-	-	-	-	-	-	-	-	-	-	-	-	-	-	-	-	-	-	-	-	-	-	-	-	-	

Aug	W	Th	F	Sa	Su	M	Tu	W	Th	F	Sa	Su	M	Tu	W	Th	F	Sa	Su	M	Tu	W	Th	F							
2018	1	2	3	4	5	6	7	8	9	10	11	12	13	14	15	16	17	18	19	20	21	22	23	24	25	26	27	28	29	30	31
	-	-	-	-	-	-	-	-	-	-	-	-	-	-	-	-	-	-	-	-	-	-	-	-	-	-	-	-	-	-	



Vacation rental  
Province of Antwerp - Flanders  
**Country House**

8  
[Book now](#)



Availability calendar - from : august 2018

Sep	Sa	Su	M	Tu	W	Th	F	Sa	Su	M	Tu	W	Th	F	Sa	Su	M	Tu	W	Th	F	Sa	Su	M	Tu	W	Th	F	Sa	Su
2018	1	2	3	4	5	6	7	8	9	10	11	12	13	14	15	16	17	18	19	20	21	22	23	24	25	26	27	28	29	30
-	-	-	-	-	-	-	-	-	-	-	-	-	-	-	-	-	-	-	-	-	-	-	-	-	-	-	-	-	-	-

Oct	M	Tu	W	Th	F	Sa	Su	M	Tu	W	Th	F	Sa	Su	M	Tu	W	Th	F	Sa	Su	M	Tu	W	Th	F	Sa	Su	M	Tu	W
2018	1	2	3	4	5	6	7	8	9	10	11	12	13	14	15	16	17	18	19	20	21	22	23	24	25	26	27	28	29	30	31
-	-	-	-	-	-	-	-	-	-	-	-	-	-	-	-	-	-	-	-	-	-	-	-	-	-	-	-	-	-	-	-

[Month : Next >>](#)

Rental rates - Country House - from 1 to 20 Person(s)

Rates	Night	Weekend	week	2 weeks	Month
 Low season	-	\$586* (Friday)	-	-	-
 High season	-	\$704* (Friday)	-	-	-

(Check-in day)

[Book now](#)

Booking conditions

• **Reservation**

- Payment made upon reservation : \$235\*
- Payment balance :  
2 weeks before the stay
- Deposit required : \$352\*

• **rentals**

- Day tax in addition
- Cleaning charge levy on departure : \$88\*

Accepted methods of payment

- Bank transfer (wire)

[▶ Book now](#)

[▶ Contact the owner](#)

Contact directly the property owners

[www.iha.com](http://www.iha.com)  
Advert No.  
12117  
[>> Book now <<](#)

Contact

Spoken languages



\* Converted at the rate indicated : €100 = \$117.29 = £89.59

Advert No. 12117

[www.iha.com](http://www.iha.com)

