

Vacation rental

Laško

"Turistična kmetija Pirc"



Wooden House, detached, 1 floor, shared entrance, in(on) a(an) Farm setting

Setting : agricultural, rustic

Capacity : from 1 to 4 person(s)

Bedroom(s) : 2

Room(s) : 3

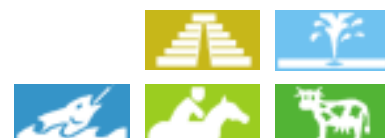
Laško - Savinjska

Slovenia

Reservation : +386 (0) 35731455 (Slovenia)

Advert No. 8697

www.ihha.com



Vacation rental



Wooden House, detached, 1 floor, shared entrance, in(on) a(an) Farm setting

- **Ideal for all age groups**
- **View :** panoramic, country side, farmland, forest, fantastic sunset
- **Setting :** agricultural, rustic

Assets

- **Parking :**
Parking uncovered : 6 reserved stall.
- **Advantages :**
Sauna, ping-pong table, 4 ping-pong bats, basket ball net, 2 bike(s)
- **baby equipment :**
High chair, comfort station, infant tub, baby potty



bedroom

Surroundings & location



Countryside Horse riding Fishing Spa



Culture

Leisure

- **Leisure activities less than 12 miles :**

Ice-skating, bathing, tennis, riding school, hiking, mountain bike (path), paragliding, flying (club), go-karting, basketball, volleyball, paintball, hunting, fishing

- **Supervised :**

Ski school, tennis school, riding school

- **Attractions and relaxation :**

Bar/pub, discotheque, restaurant, movie theater, park and garden, art gallery, historical site, museum, theater, festivals, cellar and wine tasting, casino, thermal baths, sauna, steam baths, fitness center

Surroundings

- **Locality :**

Ski slopes 25mi.
Ice skating rink 6mi.
Heated swimming pool 1.25mi.
Sea/ocean >31mi.
Public tennis court 1.25mi.
Waterfall 6mi.
River 0.62mi.
Lake 9mi.
Forest 165'

- **Amenities :**

Downtown 0.93mi.
Bus stop / bus station 0.93mi.
Car rental 9mi.
Local stores 0.93mi.
Supermarket 0.93mi.
Mail office 0.93mi.
Bank 0.93mi.
Doctor 0.93mi.
Hospital 9mi.



bedroom



interior



interior

Interior

- **Receive up to :**

from 1 to 4 person(s)

- **Liveable floor area :**

970 Sq.ft.

- **Interior layout :**

3 Room(s), 2 bedroom(s), 4 bathroom, living room 172 Sq.ft., large separate kitchen, dining area

- **Sleeps - bed(s) :**

3 full bed(s), 3 sleeper sofa(s) 2 pers, 1 baby cradle, 8 possible extra bed(s)

- **Guest facilities :**

Fireplace, T.V., internet access, wifi, wardrobe, cupboard, Hanging wardrobe, hair dryer, mosquito nets, central heating

- **Appliances :**

Electric coffee maker, electric kettle, toaster, electric stove, oven, micro-wave oven, refrigerator, deep freeze, dish washer, vacuum cleaner

Exterior

- **Outside accommodation :**

Terrace, covered terrace, balcony

- **Outside setting :**

Private courtyard, enclosed grounds, landscaped yard

- **Outside amenities :**

BBQ, yard table(s), 10 yard seat(s), yard seated area, child's swing, sand box



staff

Services

- **washing :**

Sheets, Towels, Linen, Beach towels, Comforter(s), Pillows

- **Single family home :**

Cleaning on departure, Yard/swimming pool maintenance, Snow clearance, Parking, Airport transfers supplement

- **Personnel :**

Staff, Laundry supplement

- **Restauration :**

Breakfast supplement (+\$7*)



Single family home

Photo album - 1



bedroom



interior



bedroom



interior



Single family home

Photo album - 2



staff



interior



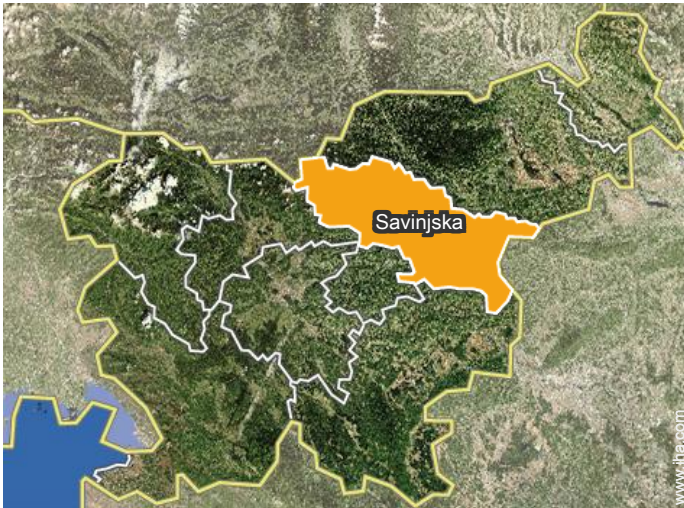
interior



interior



Location



Location & Access



GPS coordinates in degrees, minutes, seconds: Latitude 46°8'50"N - Longitude 15°14'50"E ([Dwelling](#))

Address

→ Lahomšek 1
3270 Laško

• Freeway (exit) A1

→ Celje, Savinjska, Slovenia
→ Distance : 7,5mi.
→ Time : 10'

• Railroad station Laško

→ Laško, Savinjska, Slovenia
→ Distance : 0.93mi.
→ Time : 5'

- Celje : (7,5mi.)
- Ljubljana : (56mi.)
- Maribor : (40mi.)

Contact

Spoken languages



Vacation rental
Savinjska - Laško
"Turistična kmetija Pirc"

7
[Book now](#)

Availability calendar - from : february 2018

Feb	Th	F	Sa	Su	M	Tu	W	Th	F	Sa	Su	M	Tu	W	Th	F	Sa	Su	M	Tu	W	Th	F	Sa	Su	M	Tu	W	
2018	1	2	3	4	5	6	7	8	9	10	11	12	13	14	15	16	17	18	19	20	21	22	23	24	25	26	27	28	
																										-	-	-	-

Mar	Th	F	Sa	Su	M	Tu	W	Th	F	Sa	Su	M	Tu	W	Th	F	Sa	Su	M	Tu	W	Th	F	Sa	Su	M	Tu	W	Th	F	Sa
2018	1	2	3	4	5	6	7	8	9	10	11	12	13	14	15	16	17	18	19	20	21	22	23	24	25	26	27	28	29	30	31
	-	-	-	-	-	-	-	-	-	-	-	-	-	-	-	-	-	-	-	-	-	-	-	-	-	-	-	-	-	-	-

Apr	Su	M	Tu	W	Th	F	Sa	Su	M	Tu	W	Th	F	Sa	Su	M	Tu	W	Th	F	Sa	Su	M	Tu	W	Th	F	Sa	Su	M
2018	1	2	3	4	5	6	7	8	9	10	11	12	13	14	15	16	17	18	19	20	21	22	23	24	25	26	27	28	29	30
	-	-	-	-	-	-	-	-	-	-	-	-	-	-	-	-	-	-	-	-	-	-	-	-	-	-	-	-	-	-

May	Tu	W	Th	F	Sa	Su	M	Tu	W	Th	F	Sa	Su	M	Tu	W	Th	F	Sa	Su	M	Tu	W	Th	F	Sa	Su	M	Tu	W	Th
2018	1	2	3	4	5	6	7	8	9	10	11	12	13	14	15	16	17	18	19	20	21	22	23	24	25	26	27	28	29	30	31
	-	-	-	-	-	-	-	-	-	-	-	-	-	-	-	-	-	-	-	-	-	-	-	-	-	-	-	-	-	-	-

June	F	Sa	Su	M	Tu	W	Th	F	Sa	Su	M	Tu	W	Th	F	Sa	Su	M	Tu	W	Th	F	Sa							
2018	1	2	3	4	5	6	7	8	9	10	11	12	13	14	15	16	17	18	19	20	21	22	23	24	25	26	27	28	29	30
	-	-	-	-	-	-	-	-	-	-	-	-	-	-	-	-	-	-	-	-	-	-	-	-	-	-	-	-	-	-

Jul	Su	M	Tu	W	Th	F	Sa	Su	M	Tu	W	Th	F	Sa	Su	M	Tu	W	Th	F	Sa	Su	M	Tu	W	Th	F	Sa	Su	M	Tu
2018	1	2	3	4	5	6	7	8	9	10	11	12	13	14	15	16	17	18	19	20	21	22	23	24	25	26	27	28	29	30	31
	-	-	-	-	-	-	-	-	-	-	-	-	-	-	-	-	-	-	-	-	-	-	-	-	-	-	-	-	-	-	-

Aug	W	Th	F	Sa	Su	M	Tu	W	Th	F	Sa	Su	M	Tu	W	Th	F	Sa	Su	M	Tu	W	Th	F	Sa	Su	M	Tu	W	Th	F
2018	1	2	3	4	5	6	7	8	9	10	11	12	13	14	15	16	17	18	19	20	21	22	23	24	25	26	27	28	29	30	31
	-	-	-	-	-	-	-	-	-	-	-	-	-	-	-	-	-	-	-	-	-	-	-	-	-	-	-	-	-	-	-

Sep	Sa	Su	M	Tu	W	Th	F	Sa	Su	M	Tu	W	Th	F	Sa	Su	M	Tu	W	Th	F	Sa	Su							
2018	1	2	3	4	5	6	7	8	9	10	11	12	13	14	15	16	17	18	19	20	21	22	23	24	25	26	27	28	29	30
	-	-	-	-	-	-	-	-	-	-	-	-	-	-	-	-	-	-	-	-	-	-	-	-	-	-	-	-	-	-

Oct	M	Tu	W	Th	F	Sa	Su	M	Tu	W	Th	F	Sa	Su	M	Tu	W	Th	F	Sa	Su	M	Tu	W							
2018	1	2	3	4	5	6	7	8	9	10	11	12	13	14	15	16	17	18	19	20	21	22	23	24	25	26	27	28	29	30	31
	-	-	-	-	-	-	-	-	-	-	-	-	-	-	-	-	-	-	-	-	-	-	-	-	-	-	-	-	-	-	

Nov	Th	F	Sa	Su	M	Tu	W	Th	F	Sa	Su	M	Tu	W	Th	F	Sa	Su	M	Tu	W	Th	F							
2018	1	2	3	4	5	6	7	8	9	10	11	12	13	14	15	16	17	18	19	20	21	22	23	24	25	26	27	28	29	30
	-	-	-	-	-	-	-	-	-	-	-	-	-	-	-	-	-	-	-	-	-	-	-	-	-	-	-	-	-	-

Vacation rental
Savinjska - Slovenia
"Turistična kmetija Pirc"

8
[Book now](#)

Availability calendar - from : november 2018

Dec	Sa	Su	M	Tu	W	Th	F	Sa	Su	M	Tu	W	Th	F	Sa	Su	M	Tu	W	Th	F	Sa	Su	M							
2018	1	2	3	4	5	6	7	8	9	10	11	12	13	14	15	16	17	18	19	20	21	22	23	24	25	26	27	28	29	30	31
-	-	-	-	-	-	-	-	-	-	-	-	-	-	-	-	-	-	-	-	-	-	-	-	-	-	-	-	-	-	-	

Jan	Tu	W	Th	F	Sa	Su	M	Tu	W	Th	F	Sa	Su	M	Tu	W	Th	F	Sa	Su	M	Tu	W	Th							
2019	1	2	3	4	5	6	7	8	9	10	11	12	13	14	15	16	17	18	19	20	21	22	23	24	25	26	27	28	29	30	31
-	-	-	-	-	-	-	-	-	-	-	-	-	-	-	-	-	-	-	-	-	-	-	-	-	-	-	-	-	-	-	

[Month : Next >>](#)

Rental rates - Wooden House - from 1 to 4 Person(s)

Rates	Night	Weekend	week	2 weeks	Month
 Low season	\$117*	\$235*	\$821*	\$1525*	-
 Mid season	\$117*	\$235*	\$821*	\$1525*	-
 High season	\$117*	\$235*	\$821*	\$1525*	-

[Book now](#)

Contact

Spoken languages



[▶ Book now](#)

[▶ Contact the owner](#)

Contact directly the property owners

www.iha.com
Advert No.
8697
[>> Book now <<](#)

* Converted at the rate indicated : €100 = \$123.46 = £88.94

Advert No. 8697

www.iha.com

