

Vacation rental Madrid Apartment-Flat



Apartment-Flat 3rd floor, shared entrance, in(on) a(an) Apartment house/building 2 floors

Setting : urban, tranquil

Capacity : 4 person(s)

Bedroom(s) : 2

Room(s) : 3

Madrid - Madrid (autonomous community)

Spain

Advert No. 12091

www.iha.com



>> VACATION HOMES

DIRECT BY OWNERS

Vacation rental



Apartment-Flat 3rd floor, shared entrance, in(on) a(an) Apartment house/building 2 floors

- **Ideal for couples, family**
- **View** : harbour, city
- **Setting** : urban, tranquil

Surroundings & location



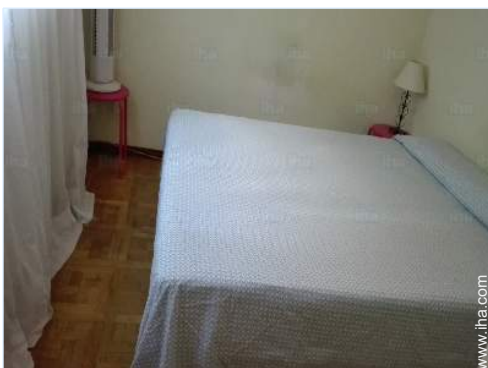
City

Leisure

- **Attractions and relaxation** :
Restaurant, park and garden, museum

Surroundings

- **Amenities** :
Downtown
Bus stop / bus station
Subway station
Car rental
Breadstore
Local stores
Supermarket
Hairdressing salon
Mail office
Bank
ATM
Drugstore
Doctor
Nurse
Hospital
Dispensary



Advert No. 12091

www.iha.com





view from the garden/park

Interior

- **Receive up to :**
4 person(s) (3 adults, 1 kids)
- **Liveable floor area :**
600 Sq.ft.
- **Interior layout :**
3 Room(s), 2 bedroom(s), 1 shower room, living room 120 Sq.ft., sitting room 237 Sq. ft., separate kitchen, dining room
- **Sleeps - bed(s) :**
1 queen-size bed(s), 1 sleeper sofa(s) 2 pers, 1 twin bed(s)
- **Guest facilities :**
T.V., cable/satelite, internet access, high speed internet access, wifi, mobile cool air fan, central heating, Drapes, entry phone system
- **Appliances :**
Crockery/flatware, kitchen utensils, electric coffee maker, electric kettle, juicer, electric stove, oven, refridgerator, deep freeze, washing machine

Exterior

- **Ground surface :**
4,300 Sq.ft.
- **Outside accommodation :**
Terrace 55 Sq.ft., roof terrace 970 Sq.ft.
- **Outside setting :**
Yard, river



Services

- **washing :**
Sheets, Towels, Comforter(s), Pillows

For your guidance

- **For your guidance**
Kids welcome
Cell phone network coverage, personal transport advisable, alcohol not permitted
Water : hot/cold
Local voltage supply : 110-120V / 60Hz
Electricity supply : shared generator



Appliances

Photo album - 1



view from the garden/park



Appliances

Photo album - 2



the apartment

the apartment house/building



living room

Photo album - 3



view from the terrace

view from the garden/park



Location



Location & Access



GPS coordinates in degrees, minutes, seconds: Latitude 40°23'25"N - Longitude 3°42'43"W ([Dwelling](#))

Address

→ Paseo Santa Maria de la Cabeza 128
28000 Madrid

• Airport Madrid Barajas

→ Madrid, Madrid (autonomous community), Spain
→ Distance : 10mi.
→ Time : 30'

• Railroad station Madrid Atocha

→ Madrid, Madrid (autonomous community), Spain
→ Time : 10'

• Aranjuez : (165')

• Burguillos de Toledo : (59mi.)

Contact

Spoken languages



Vacation rental Madrid (autonomous community) - Spain Apartment-Flat

8
[Book now](#)

Availability calendar - from : february 2018

Feb	Th	F	Sa	Su	M	Tu	W	Th	F	Sa	Su	M	Tu	W	Th	F	Sa	Su	M	Tu	W	Th	F	Sa	Su	M	Tu	W
2018	1	2	3	4	5	6	7	8	9	10	11	12	13	14	15	16	17	18	19	20	21	22	23	24	25	26	27	28
																							-	-	-	-	-	-

Mar	Th	F	Sa	Su	M	Tu	W	Th	F	Sa	Su	M	Tu	W	Th	F	Sa	Su	M	Tu	W	Th	F	Sa	Su	M	Tu	W	Th	F	Sa
2018	1	2	3	4	5	6	7	8	9	10	11	12	13	14	15	16	17	18	19	20	21	22	23	24	25	26	27	28	29	30	31
	-	-	-	-	-	-	-	-	-	-	-	-	-	-	-	-	-	-	-	-	-	-	-	-	-	-	-	-	-	-	-

Apr	Su	M	Tu	W	Th	F	Sa	Su	M	Tu	W	Th	F	Sa	Su	M	Tu	W	Th	F	Sa	Su	M	Tu	W	Th	F	Sa	Su	M
2018	1	2	3	4	5	6	7	8	9	10	11	12	13	14	15	16	17	18	19	20	21	22	23	24	25	26	27	28	29	30
	-	-	-	-	-	-	-	-	-	-	-	-	-	-	-	-	-	-	-	-	-	-	-	-	-	-	-	-	-	-

May	Tu	W	Th	F	Sa	Su	M	Tu	W	Th	F	Sa	Su	M	Tu	W	Th	F	Sa	Su	M	Tu	W	Th	F	Sa	Su	M	Tu	W	Th
2018	1	2	3	4	5	6	7	8	9	10	11	12	13	14	15	16	17	18	19	20	21	22	23	24	25	26	27	28	29	30	31
	-	-	-	-	-	-	-	-	-	-	-	-	-	-	-	-	-	-	-	-	-	-	-	-	-	-	-	-	-	-	-

June	F	Sa	Su	M	Tu	W	Th	F	Sa	Su	M	Tu	W	Th	F	Sa	Su	M	Tu	W	Th	F	Sa	Su	M	Tu	W	Th	F	Sa
2018	1	2	3	4	5	6	7	8	9	10	11	12	13	14	15	16	17	18	19	20	21	22	23	24	25	26	27	28	29	30
	-	-	-	-	-	-	-	-	-	-	-	-	-	-	-	-	-	-	-	-	-	-	-	-	-	-	-	-	-	-

Jul	Su	M	Tu	W	Th	F	Sa	Su	M	Tu	W	Th	F	Sa	Su	M	Tu	W	Th	F	Sa	Su	M	Tu	W	Th	F	Sa	Su	M	Tu
2018	1	2	3	4	5	6	7	8	9	10	11	12	13	14	15	16	17	18	19	20	21	22	23	24	25	26	27	28	29	30	31
	-	-	-	-	-	-	-	-	-	-	-	-	-	-	-	-	-	-	-	-	-	-	-	-	-	-	-	-	-	-	-

Aug	W	Th	F	Sa	Su	M	Tu	W	Th	F	Sa	Su	M	Tu	W	Th	F	Sa	Su	M	Tu	W	Th	F	Sa	Su	M	Tu	W	Th	F
2018	1	2	3	4	5	6	7	8	9	10	11	12	13	14	15	16	17	18	19	20	21	22	23	24	25	26	27	28	29	30	31
	-	-	-	-	-	-	-	-	-	-	-	-	-	-	-	-	-	-	-	-	-	-	-	-	-	-	-	-	-	-	-

Sep	Sa	Su	M	Tu	W	Th	F	Sa	Su	M	Tu	W	Th	F	Sa	Su	M	Tu	W	Th	F	Sa	Su							
2018	1	2	3	4	5	6	7	8	9	10	11	12	13	14	15	16	17	18	19	20	21	22	23	24	25	26	27	28	29	30
	-	-	-	-	-	-	-	-	-	-	-	-	-	-	-	-	-	-	-	-	-	-	-	-						

Oct	M	Tu	W	Th	F	Sa	Su	M	Tu	W	Th	F	Sa	Su	M	Tu	W	Th	F	Sa	Su	M	Tu	W							
2018	1	2	3	4	5	6	7	8	9	10	11	12	13	14	15	16	17	18	19	20	21	22	23	24	25	26	27	28	29	30	31
	-	-	-	-	-	-	-	-	-	-	-	-	-	-	-	-	-	-	-	-	-	-	-	-	-	-	-	-	-	-	

Nov	Th	F	Sa	Su	M	Tu	W	Th	F	Sa	Su	M	Tu	W	Th	F	Sa	Su	M	Tu	W	Th	F							
2018	1	2	3	4	5	6	7	8	9	10	11	12	13	14	15	16	17	18	19	20	21	22	23	24	25	26	27	28	29	30
	-	-	-	-	-	-	-	-	-	-	-	-	-	-	-	-	-	-	-	-	-	-	-	-						

■ Mid season ■ High season



Vacation rental
Madrid - Spain
Apartment-Flat

9

[Book now](#)

Availability calendar - from : november 2018

Dec	Sa	Su	M	Tu	W	Th	F	Sa	Su	M	Tu	W	Th	F	Sa	Su	M	Tu	W	Th	F	Sa	Su	M	
2018	1	2	3	4	5	6	7	8	9	10	11	12	13	14	15	16	17	18	19	20	21	22	23	24	25
	-	-	-	-	-	-	-	-	-	-	-	-	-	-	-	-	-	-	-	-	-	-	-	-	-

Jan	Tu	W	Th	F	Sa	Su	M	Tu	W	Th	F	Sa	Su	M	Tu	W	Th	F	Sa	Su	M	Tu	W	Th	
2019	1	2	3	4	5	6	7	8	9	10	11	12	13	14	15	16	17	18	19	20	21	22	23	24	25
	-	-	-	-	-	-	-	-	-	-	-	-	-	-	-	-	-	-	-	-	-	-	-	-	-

■ Mid season

■ High season

[Month : Next >>](#)

Rental rates - Apartment-Flat - 4 Person(s)

Rates	Night	Weekend	week	2 weeks	Month
■ Mid season	\$56*	-	\$321*	-	\$963*
■ High season	\$86*	-	\$346*	\$679*	\$988*
■ Festive specials	\$86*	-	-	\$617*	-

[Book now](#)

Booking conditions

• **Reservation**

→ Payment made upon reservation : 25% of rental sum
→ Payment balance : on handing over the keys

• **rentals**

→ Service charges included
→ Day tax included
→ Cleaning charge levy on departure : \$37*
→ Anticipated supplement for :
- baby
- animals

Accepted methods of payment

• Visa/Delta/Electron • Bank transfer (wire) • MasterCard/EuroCard • American Express • Diners Club • Cash

[▶ Book now](#)

[▶ Contact the owner](#)

Contact directly the property owners

www.iha.com
Advert No.
12091
>> Book now <<

Contact

Spoken languages



* Converted at the rate indicated : €100 = \$123.46 = £88.94

Advert No. 12091

www.iha.com



>> VACATION HOMES

DIRECT BY OWNERS