

Vacation rental Most na Soči Country House



Country House, detached, 2 floors,
separate entrance, in(on) a(an) Charming
Property

Setting : rural, mountainy

Capacity : from 2 to 14 person(s)

Bedroom(s) : 5

Most na Soči - Julian Alps

Slovenia

Reservation : +386 (0) 31 607 237 (Slovenia)

Advert No. 72913

www.iha.com



Vacation rental



Country House, detached, 2 floors, separate entrance, in(on) a(an) Charming Property

- **Ideal for all age groups**
- **View :** panoramic, mountain, country side, farmland, fantastic sunset
- **Setting :** rural, mountainy

Assets

- **Parking :**
Parking uncovered
- **Advantages :**
Table football, basket ball net
- **baby equipment :**
High chair



covered terrace

Surroundings & location



Countryside



Fishing



Culture

Leisure

- **Leisure activities less than 12 miles :**

Canoeing, canyoning, rafting, coastal/forest paths, hiking, rock climbing, mountain bike (path), parachuting, paragliding, boat trips, basketball, hunting, fishing

- **Attractions and relaxation :**

Bar/pub, restaurant, park and garden, historical site, museum, festivals, cellar and wine tasting, casino

Surroundings

- **Locality :**

Ski lifts 25mi.
Rocky beach 3mi.
9 hole golf course 18.5mi.
Watersports centre 6mi.
River rapids 15.5mi.
River 2.5mi.
Lake 2.5mi.
Forest 330'
Mountain range 9mi.

- **Amenities :**

Village center 0.5mi.
Boat rental 2.5mi.
Breadstore 2.5mi.
Local stores 2.5mi.
Supermarket 6mi.
Mail office 2.5mi.
Bank 2.5mi.
Drugstore 2.5mi.
Doctor 2.5mi.
Hospital 25mi.



bedroom



view over the mountain



living room

Interior

- **Receive up to :**
from 2 to 14 person(s)
- **Liveable floor area :**
2,700 Sq.ft.
- **Interior layout :**
5 bedroom(s), 2 shower room, living room, sitting room, separate kitchen, dining area, tv den, laundry room, veranda
- **Sleeps - bed(s) :**
5 full bed(s), 1 queen-size bed(s), 1 sleeper sofa(s) 2 pers
- **Guest facilities :**
T.V., cable/satellite, internet access, wifi, central heating
- **Appliances :**
Electric kettle, toaster, electric stove, oven, refrigerator, washing machine, vacuum cleaner, iron, ironing board

Exterior

- **Ground surface :**
2.5 acres
- **Outside accommodation :**
Covered terrace 430 Sq.ft., balcony 215 Sq.ft.
- **Outside setting :**
Enclosed grounds 2.5 acres, yard 4,300 Sq.ft.
- **Outside amenities :**
BBQ



shower room

Services

- **Single family home :**
Cleaning on departure, Parking

For your guidance

- **For your guidance**
Kids welcome
Pets friendly
Present on site : pets
Non smoking rental, cell phone network coverage, personal transport advisable
Water : hot/cold
Local voltage supply : 220-240V / 50Hz
Electricity supply : mains



kitchen

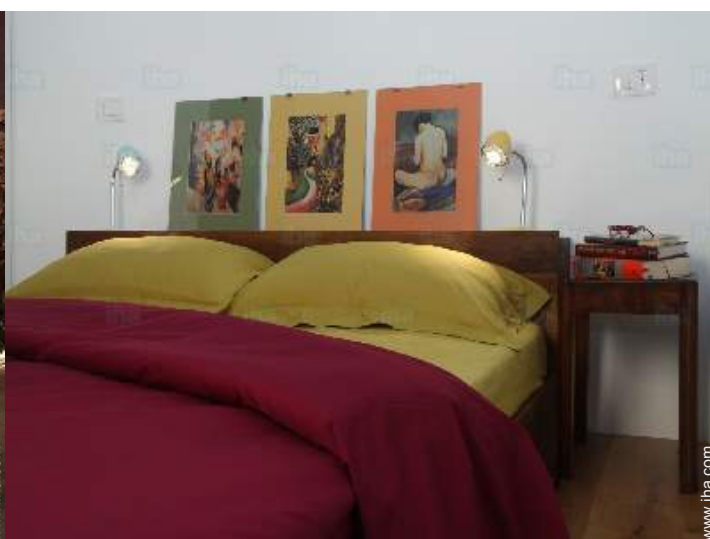
Photo album - 1



covered terrace



view over the mountain



bedroom



living room



kitchen

Photo album - 2



shower room



mountain bike (path)



mountain bike (path)



paragliding



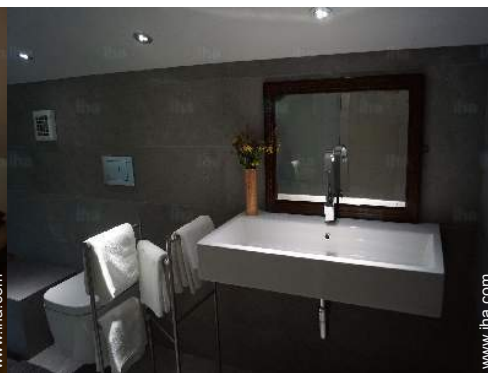
fishing



bedroom



bedroom



shower room



Kitchen Area

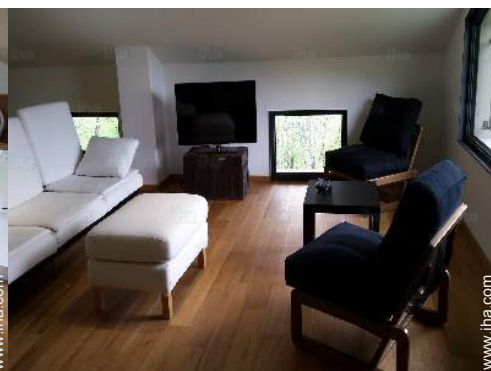
Photo album - 3



kitchen



kitchen



living room



balcony



view from the apartment



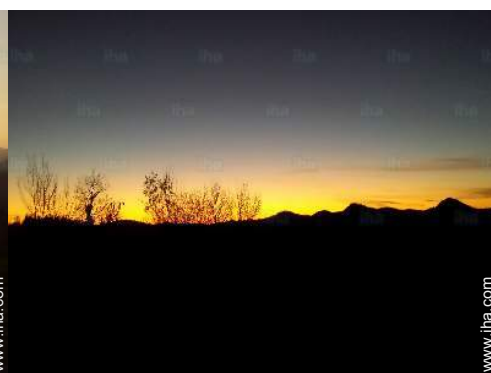
Fall



Countryside



Outside amenities

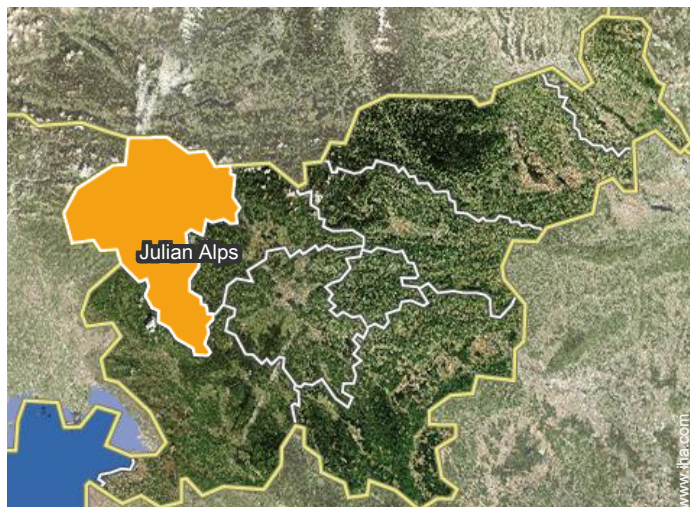


View from the property



View from the property

Location



Location & Access



GPS coordinates in degrees, minutes, seconds: Latitude 46°7'58"N - Longitude 13° 44'41"E (Dwelling)

Address

→ Tolminski Lom 30
5216 Most na Soči

• Airport Ljubljana Jože Pučnik

→ Ljubljana, Central Slovenia, Slovenia
→ Distance : 50mi.

• Airport Friuli Venezia Giulia

→ Trieste, Trieste Province, Friuli Venezia Giulia, Italy
→ Distance : 43,5mi.

• Airport Venice Marco Polo

→ Venice, Venice Province, Veneto, Italy
→ Distance : 112mi.
→ Time : 2h

• Tolmin : (3mi.)

- Piran : (87mi.)
- Venice : (118mi.)

Contact

Spoken languages



Vacation rental Julian Alps - Slovenia Country House

8
[Book now](#)

Availability calendar - from : june 2019

June	Sa	Su	M	Tu	W	Th	F	Sa	Su	M	Tu	W	Th	F	Sa	Su	M	Tu	W	Th	F	Sa	Su	M	Tu	W	Th	F	Sa	Su	
2019	1	2	3	4	5	6	7	8	9	10	11	12	13	14	15	16	17	18	19	20	21	22	23	24	25	26	27	28	29	30	
																									-	-	-	-	-	-	-

Jul	M	Tu	W	Th	F	Sa	Su	M	Tu	W	Th	F	Sa	Su	M	Tu	W	Th	F	Sa	Su	M	Tu	W	Th	F	Sa	Su	M	Tu	W
2019	1	2	3	4	5	6	7	8	9	10	11	12	13	14	15	16	17	18	19	20	21	22	23	24	25	26	27	28	29	30	31
	-	-	-	-	-	-	-	-	-	-	-	-	-	-	-	-	-	-	-	-	-	-	-	-	-	-	-	-	-	-	-

Aug	Th	F	Sa	Su	M	Tu	W	Th	F	Sa	Su	M	Tu	W	Th	F	Sa	Su	M	Tu	W	Th	F	Sa	Su	M	Tu	W	Th	F	Sa
2019	1	2	3	4	5	6	7	8	9	10	11	12	13	14	15	16	17	18	19	20	21	22	23	24	25	26	27	28	29	30	31
	-	-	-	-	-	-	-	-	-	-	-	-	-	-	-	-	-	-	-	-	-	-	-	-	-	-	-	-	-	-	-

Sep	Su	M	Tu	W	Th	F	Sa	Su	M	Tu	W	Th	F	Sa	Su	M	Tu	W	Th	F	Sa	Su	M	Tu	W	Th	F	Sa	Su	M
2019	1	2	3	4	5	6	7	8	9	10	11	12	13	14	15	16	17	18	19	20	21	22	23	24	25	26	27	28	29	30
	-	-	-	-	-	-	-	-	-	-	-	-	-	-	-	-	-	-	-	-	-	-	-	-	-	-	-	-	-	-

Oct	Tu	W	Th	F	Sa	Su	M	Tu	W	Th	F	Sa	Su	M	Tu	W	Th	F	Sa	Su	M	Tu	W	Th	F	Sa	Su	M	Tu	W	Th
2019	1	2	3	4	5	6	7	8	9	10	11	12	13	14	15	16	17	18	19	20	21	22	23	24	25	26	27	28	29	30	31
	-	-	-	-	-	-	-	-	-	-	-	-	-	-	-	-	-	-	-	-	-	-	-	-	-	-	-	-	-	-	-

Nov	F	Sa	Su	M	Tu	W	Th	F	Sa	Su	M	Tu	W	Th	F	Sa	Su	M	Tu	W	Th	F	Sa	Su	M	Tu	W	Th	F	Sa
2019	1	2	3	4	5	6	7	8	9	10	11	12	13	14	15	16	17	18	19	20	21	22	23	24	25	26	27	28	29	30
	-	-	-	-	-	-	-	-	-	-	-	-	-	-	-	-	-	-	-	-	-	-	-	-	-	-	-	-	-	-

Dec	Su	M	Tu	W	Th	F	Sa	Su	M	Tu	W	Th	F	Sa	Su	M	Tu	W	Th	F	Sa	Su	M	Tu	W	Th	F	Sa	Su	M	Tu
2019	1	2	3	4	5	6	7	8	9	10	11	12	13	14	15	16	17	18	19	20	21	22	23	24	25	26	27	28	29	30	31
	-	-	-	-	-	-	-	-	-	-	-	-	-	-	-	-	-	-	-	-	-	-	-	-	-	-	-	-	-	-	-

Jan	W	Th	F	Sa	Su	M	Tu	W	Th	F	Sa	Su	M	Tu	W	Th	F	Sa	Su	M	Tu	W	Th	F	Sa	Su	M	Tu	W	Th	F
2020	1	2	3	4	5	6	7	8	9	10	11	12	13	14	15	16	17	18	19	20	21	22	23	24	25	26	27	28	29	30	31
	-	-	-	-	-	-	-	-	-	-	-	-	-	-	-	-	-	-	-	-	-	-	-	-	-	-	-	-	-	-	-

Feb	Sa	Su	M	Tu	W	Th	F	Sa	Su	M	Tu	W	Th	F	Sa	Su	M	Tu	W	Th	F	Sa	Su	M	Tu	W	Th	F	Sa
2020	1	2	3	4	5	6	7	8	9	10	11	12	13	14	15	16	17	18	19	20	21	22	23	24	25	26	27	28	29
	-	-	-	-	-	-	-	-	-	-	-	-	-	-	-	-	-	-	-	-	-	-	-	-	-	-	-	-	-

Mar	Su	M	Tu	W	Th	F	Sa	Su	M	Tu	W	Th	F	Sa	Su	M	Tu	W	Th	F	Sa	Su	M	Tu	W	Th	F	Sa	Su	M	Tu
2020	1	2	3	4	5	6	7	8	9	10	11	12	13	14	15	16	17	18	19	20	21	22	23	24	25	26	27	28	29	30	31
	-	-	-	-	-	-	-	-	-	-	-	-	-	-	-	-	-	-	-	-	-	-	-	-	-	-	-	-	-	-	-

 Reserved

Vacation rental
Most na Soči - Slovenia
Country House

9

[Book now](#)

Availability calendar - from : march 2020

Apr	W	Th	F	Sa	Su	M	Tu	W	Th	F	Sa	Su	M	Tu	W	Th	F	Sa	Su	M	Tu	W	Th	F	Sa	Su	M	Tu	W	Th
2020	1	2	3	4	5	6	7	8	9	10	11	12	13	14	15	16	17	18	19	20	21	22	23	24	25	26	27	28	29	30
	-	-	-	-	-	-	-	-	-	-	-	-	-	-	-	-	-	-	-	-	-	-	-	-	-	-	-	-	-	-

May	F	Sa	Su	M	Tu	W	Th	F	Sa	Su	M	Tu	W	Th	F	Sa	Su	M	Tu	W	Th	F	Sa	Su							
2020	1	2	3	4	5	6	7	8	9	10	11	12	13	14	15	16	17	18	19	20	21	22	23	24	25	26	27	28	29	30	31
	-	-	-	-	-	-	-	-	-	-	-	-	-	-	-	-	-	-	-	-	-	-	-	-	-	-	-	-	-		

Reserved

[Month : Next >>](#)

Rental rates - Country House - from 2 to 14 Person(s)

Rates	Night	Weekend	week	2 weeks	Month
<input type="checkbox"/> Low season	\$82* > 3	-	\$573*	-	-
<input type="checkbox"/> High season	\$93* > 3	-	\$654*	-	-

> Minimum Night

[Book now](#)

Booking conditions

• Reservation

→ Payment made upon reservation :
20% of rental sum
→ Payment balance :
2 weeks before the stay

• rentals

→ Service charges to be added
→ Day tax in addition
→ Cleaning charge levy on departure : \$35*
→ Anticipated supplement for :
- animals
- supplementary bed(s)

Accepted methods of payment

• Bank transfer (wire) • Cash

[▶ Book now](#)

[▶ Contact the owner](#)

Contact directly the property owners

www.iha.com
Advert No.
72913
>> Book now <<

Contact

Spoken languages



* Converted at the rate indicated : €100 = \$116.85 = £89

Advert No. 72913

www.iha.com



>> VACATION HOMES

DIRECT BY OWNERS