

Vacation rental Nettle Bay "Flamboyant Village"

Located on Nettle Bay, facing the Simpson Bay Lagoon, the Studio is a charming and comfortable apartment furnished and equipped.



Apartment-Flat first floor, separate entrance, in(on) a(an) Estate 1 floor

Setting : quiet

Capacity : from 2 to 6 person(s)

Bedroom(s) : 1

Room(s) : 3

Nettle Bay - St Martin french side

St Marteen

Reservation : +590 (0) 690506642 (Guadeloupe)

Advert No. 27539

www.iha.com



Vacation rental



Apartment-Flat first floor, separate entrance, in(on) a(an) Estate 1 floor

- **Ideal for all age groups**
- **View :** garden/park, fantastic sunset
- **Setting :** quiet

" Modern and designed, includes: 1 bathroom; Toilet and laundry; 1 separate bedroom with 1 bed 160x200; 1 living room equipped with a sofa bed with 1 bed 160 x 200 SIMMONS, and 1 child sleeping place. Kitchen with terrace. The Studio offers you peace and quiet with access to 2 pools, volley ball and petanque fields and the beautiful beaches a few kilometres away. COMFORT and amenities: Air conditioning, new and quiet, shower, linens provided (bedsheets, towels, washing machine, fully equipped kitchen (oven, hob induction, microwave, Nespresso coffee machine, kettle, Toaster, fridge), Brewer of air, TV flat screen with CANAL SAT, Internet, garden and parking monitored 24/24. Children are welcome! A cot is available on request. "

Assets

- **Swimming pool :**
Shared swimming pool, unusual, illuminated, child secure, plunge pool, outside shower (open from 'january 01' till 'december 31')
- **Parking :**
Parking uncovered : internal.
- **Advantages :**
Volley ball court, pétanque field

Benefits :
Direct access to the beach, private beach

Surroundings & location



Ocean

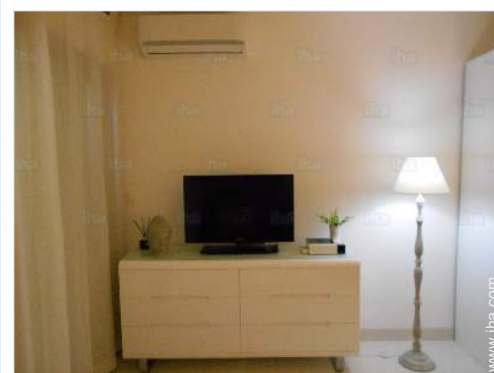
" Enjoy proximity to the Dutch coast by Colebay and Maho. A few meters, you will find bakery, pharmacy, supermarket, petrol station, restaurants, etc. Enjoy the 2 swimming pools of the Village, its beach. A water sport is available on the beach (with extras, to deal directly with them). "

Leisure

- **Leisure activities less than 12 miles :**
Jet ski, surfing, windsurfing, sailing, kite surfing, parascending, boat trips, go-karting, volleyball
- **Supervised :**
Dive school
- **Attractions and relaxation :**
Bar/pub, discotheque, restaurant, movie theater, casino, beauticians

Surroundings

- **Locality :**
Sandy beach <165'
Public swimming pool <165'
Watersports centre <165'
Marina 1.85mi.
- **Amenities :**
Downtown
Breadstore <165'
Caterer <165'
Local stores <165'
Supermarket 0.62mi.
High class retailers 1.85mi.
Hairdressing salon <165'
Drugstore 165'



tv den



tv den



sleeping area

Interior

- **Receive up to :**
from 2 to 6 person(s) (4 adults, 2 kids)
- **Liveable floor area :**
530 Sq.ft.
- **Interior layout :**
3 Room(s), 1 bedroom(s), 1 shower room, 1 toilets, living room, sitting room, separate kitchen, dining area, tv den
- **Sleeps - bed(s) :**
1 full bed(s), 1 sleeper sofa(s) 2 pers, 1 sleeper sofa(s) 1 pers, 1 baby cradle
- **Guest facilities :**
T.V., high speed internet access, wifi, wardrobe, Hanging wardrobe, safe deposit box, hair dryer, fully air-conditioned, Glazed in area, Drapes, Rolling shutters, electric shutters, fire alarm, remote controlled gates
- **Appliances :**
Crockery/flatware, kitchen utensils, electric espresso coffee maker, electric kettle, electric hobs, oven, micro-wave oven, refridgerator, deep freeze, washing machine, clothes dryer, vacuum cleaner, iron, ironing board

Exterior

- **Outside accommodation :**
Covered terrace
- **Outside setting :**
Yard



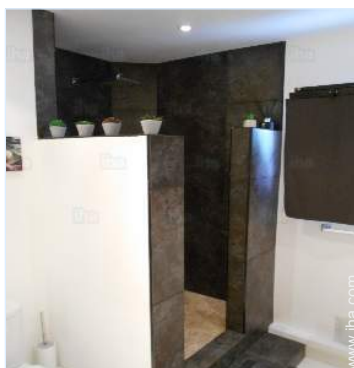
shower room

Services

- **washing :**
Sheets, Towels, Linen, Comforter(s), Pillows
- **Single family home :**
Cleaning on departure supplement (+\$35*), Yard/swimming pool maintenance, Caretaker/ concierge, Parking

For your guidance

- **For your guidance**
Kids welcome
No pet allowed
Non smoking rental, cell phone network coverage, personal transport advisable
Water : hot/cold
Local voltage supply : 110-120V / 60Hz
Electricity supply : mains
- **Handicapped people welcome**
Wheelchair access

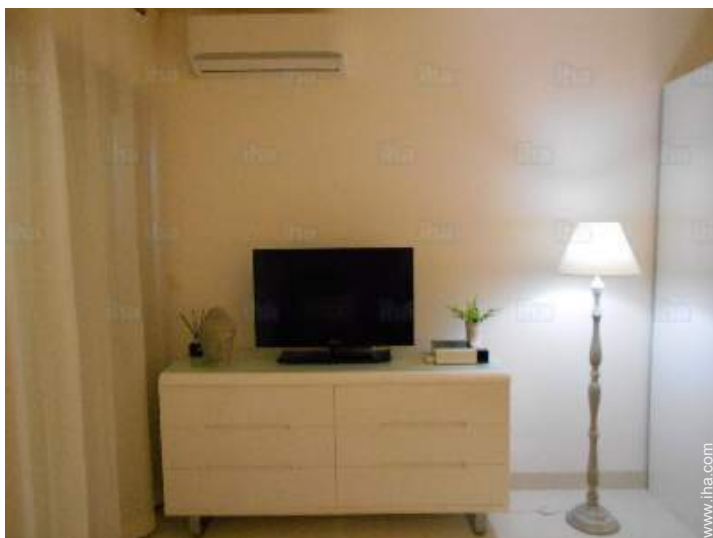


shower room

Photo album - 1



tv den



tv den



sleeping area



shower room



shower room

Photo album - 2



sleeping area



separate kitchen



dining area



Interior layout and facilities



overall view



Swimming pool



leisure equipment



Swimming pool

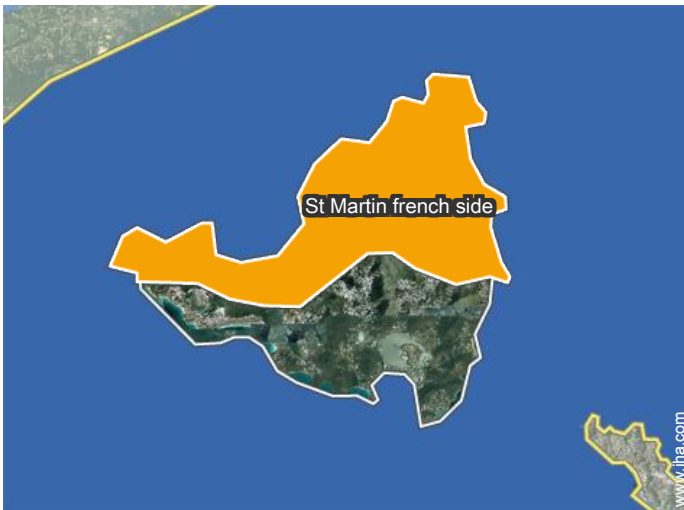


the apartment



aerial view

Location



Location & Access

" On the exit to Marigot, on the road to the Nettle Bay you will find the Village on your left. "



GPS coordinates in degrees, minutes, seconds: Latitude 18°4'57"N - Longitude 63°3'8"W (Dwelling)

Address

→ 2203 Flamboyant Village
97150 Nettle Bay

● Airport Saint Martin Grand Case Esperance

→ Grand Case, St Martin french side, St
Marteen
→ Distance : 8mi.

● Sea port Marigot

→ Marigot, St Martin french side, St
Marteen
→ Distance : 3mi.

- Lowlands - Terres Basses : (3mi.)
- Cole Bay : (4.5mi.)
- Marigot : (4.5mi.)

Contact

Spoken
languages



Vacation rental
 St Martin french side - Nettle Bay
"Flamboyant Village"

7
[Book now](#)

Availability calendar - from : november 2017

| | | | | | | | | | | | | | | | | | | | | | | | | | | | | | | | | |
|------|----|----|----|----|----|----|----|----|----|----|----|----|----|----|----|----|----|----|----|----|----|----|----|----|----|----|----|----|----|----|----|--|
| Nov | W | Th | F | Sa | Su | M | Tu | W | Th | F | Sa | Su | M | Tu | W | Th | F | Sa | Su | M | Tu | W | Th | F | Sa | Su | M | Tu | W | Th | | |
| 2017 | 1 | 2 | 3 | 4 | 5 | 6 | 7 | 8 | 9 | 10 | 11 | 12 | 13 | 14 | 15 | 16 | 17 | 18 | 19 | 20 | 21 | 22 | 23 | 24 | 25 | 26 | 27 | 28 | 29 | 30 | | |
| | | | | | | | | | | | | | | | | | | | | | | | | | | | | | | | | |
| Dec | F | Sa | Su | M | Tu | W | Th | F | Sa | Su | M | Tu | W | Th | F | Sa | Su | M | Tu | W | Th | F | Sa | Su | M | Tu | W | Th | F | Sa | Su | |
| 2017 | 1 | 2 | 3 | 4 | 5 | 6 | 7 | 8 | 9 | 10 | 11 | 12 | 13 | 14 | 15 | 16 | 17 | 18 | 19 | 20 | 21 | 22 | 23 | 24 | 25 | 26 | 27 | 28 | 29 | 30 | 31 | |
| | - | - | - | - | - | - | - | - | - | - | - | - | - | - | - | - | - | - | - | - | - | - | - | - | - | - | - | - | - | - | - | |
| Jan | M | Tu | W | Th | F | Sa | Su | M | Tu | W | Th | F | Sa | Su | M | Tu | W | Th | F | Sa | Su | M | Tu | W | Th | F | Sa | Su | M | Tu | W | |
| 2018 | 1 | 2 | 3 | 4 | 5 | 6 | 7 | 8 | 9 | 10 | 11 | 12 | 13 | 14 | 15 | 16 | 17 | 18 | 19 | 20 | 21 | 22 | 23 | 24 | 25 | 26 | 27 | 28 | 29 | 30 | 31 | |
| | - | - | - | - | - | - | - | - | - | - | - | - | - | - | - | - | - | - | - | - | - | - | - | - | - | - | - | - | - | - | - | |
| Feb | Th | F | Sa | Su | M | Tu | W | Th | F | Sa | Su | M | Tu | W | Th | F | Sa | Su | M | Tu | W | Th | F | Sa | Su | M | Tu | W | | | | |
| 2018 | 1 | 2 | 3 | 4 | 5 | 6 | 7 | 8 | 9 | 10 | 11 | 12 | 13 | 14 | 15 | 16 | 17 | 18 | 19 | 20 | 21 | 22 | 23 | 24 | 25 | 26 | 27 | 28 | | | | |
| | - | - | - | - | - | - | - | - | - | - | - | - | - | - | - | - | - | - | - | - | - | - | - | - | - | - | - | - | - | - | - | |
| Mar | Th | F | Sa | Su | M | Tu | W | Th | F | Sa | Su | M | Tu | W | Th | F | Sa | Su | M | Tu | W | Th | F | Sa | Su | M | Tu | W | Th | F | Sa | |
| 2018 | 1 | 2 | 3 | 4 | 5 | 6 | 7 | 8 | 9 | 10 | 11 | 12 | 13 | 14 | 15 | 16 | 17 | 18 | 19 | 20 | 21 | 22 | 23 | 24 | 25 | 26 | 27 | 28 | 29 | 30 | 31 | |
| | - | - | - | - | - | - | - | - | - | - | - | - | - | - | - | - | - | - | - | - | - | - | - | - | - | - | - | - | - | - | - | |
| Apr | Su | M | Tu | W | Th | F | Sa | Su | M | Tu | W | Th | F | Sa | Su | M | Tu | W | Th | F | Sa | Su | M | Tu | W | Th | F | Sa | Su | M | | |
| 2018 | 1 | 2 | 3 | 4 | 5 | 6 | 7 | 8 | 9 | 10 | 11 | 12 | 13 | 14 | 15 | 16 | 17 | 18 | 19 | 20 | 21 | 22 | 23 | 24 | 25 | 26 | 27 | 28 | 29 | 30 | | |
| | - | - | - | - | - | - | - | - | - | - | - | - | - | - | - | - | - | - | - | - | - | - | - | - | - | - | - | - | - | - | - | |
| May | Tu | W | Th | F | Sa | Su | M | Tu | W | Th | F | Sa | Su | M | Tu | W | Th | F | Sa | Su | M | Tu | W | Th | F | Sa | Su | M | Tu | W | Th | |
| 2018 | 1 | 2 | 3 | 4 | 5 | 6 | 7 | 8 | 9 | 10 | 11 | 12 | 13 | 14 | 15 | 16 | 17 | 18 | 19 | 20 | 21 | 22 | 23 | 24 | 25 | 26 | 27 | 28 | 29 | 30 | 31 | |
| | - | - | - | - | - | - | - | - | - | - | - | - | - | - | - | - | - | - | - | - | - | - | - | - | - | - | - | - | - | - | - | |
| June | F | Sa | Su | M | Tu | W | Th | F | Sa | Su | M | Tu | W | Th | F | Sa | Su | M | Tu | W | Th | F | Sa | Su | M | Tu | W | Th | F | Sa | | |
| 2018 | 1 | 2 | 3 | 4 | 5 | 6 | 7 | 8 | 9 | 10 | 11 | 12 | 13 | 14 | 15 | 16 | 17 | 18 | 19 | 20 | 21 | 22 | 23 | 24 | 25 | 26 | 27 | 28 | 29 | 30 | | |
| | - | - | - | - | - | - | - | - | - | - | - | - | - | - | - | - | - | - | - | - | - | - | - | - | - | - | - | - | - | - | - | |
| Jul | Su | M | Tu | W | Th | F | Sa | Su | M | Tu | W | Th | F | Sa | Su | M | Tu | W | Th | F | Sa | Su | M | Tu | W | Th | F | Sa | Su | M | Tu | |
| 2018 | 1 | 2 | 3 | 4 | 5 | 6 | 7 | 8 | 9 | 10 | 11 | 12 | 13 | 14 | 15 | 16 | 17 | 18 | 19 | 20 | 21 | 22 | 23 | 24 | 25 | 26 | 27 | 28 | 29 | 30 | 31 | |
| | - | - | - | - | - | - | - | - | - | - | - | - | - | - | - | - | - | - | - | - | - | - | - | - | - | - | - | - | - | - | - | |
| Aug | W | Th | F | Sa | Su | M | Tu | W | Th | F | Sa | Su | M | Tu | W | Th | F | Sa | Su | M | Tu | W | Th | F | Sa | Su | M | Tu | W | Th | F | |
| 2018 | 1 | 2 | 3 | 4 | 5 | 6 | 7 | 8 | 9 | 10 | 11 | 12 | 13 | 14 | 15 | 16 | 17 | 18 | 19 | 20 | 21 | 22 | 23 | 24 | 25 | 26 | 27 | 28 | 29 | 30 | 31 | |
| | - | - | - | - | - | - | - | - | - | - | - | - | - | - | - | - | - | - | - | - | - | - | - | - | - | - | - | - | - | - | - | |



Vacation rental
St Martin french side - St Marteen
"Flamboyant Village"

8
[Book now](#)





Availability calendar - from : august 2018

| Sep | Sa | Su | M | Tu | W | Th | F | Sa | Su | M | Tu | W | Th | F | Sa | Su | M | Tu | W | Th | F | Sa | Su | M | Tu | W | Th | F | Sa | Su |
|------|----|----|---|----|---|----|---|----|----|----|----|----|----|----|----|----|----|----|----|----|----|----|----|----|----|----|----|----|----|----|
| 2018 | 1 | 2 | 3 | 4 | 5 | 6 | 7 | 8 | 9 | 10 | 11 | 12 | 13 | 14 | 15 | 16 | 17 | 18 | 19 | 20 | 21 | 22 | 23 | 24 | 25 | 26 | 27 | 28 | 29 | 30 |
| - | - | - | - | - | - | - | - | - | - | - | - | - | - | - | - | - | - | - | - | - | - | - | - | - | - | - | - | - | - | - |

| Oct | M | Tu | W | Th | F | Sa | Su | M | Tu | W | Th | F | Sa | Su | M | Tu | W | Th | F | Sa | Su | M | Tu | W | Th | F | Sa | Su | M | Tu | W |
|------|---|----|---|----|---|----|----|---|----|----|----|----|----|----|----|----|----|----|----|----|----|----|----|----|----|----|----|----|----|----|----|
| 2018 | 1 | 2 | 3 | 4 | 5 | 6 | 7 | 8 | 9 | 10 | 11 | 12 | 13 | 14 | 15 | 16 | 17 | 18 | 19 | 20 | 21 | 22 | 23 | 24 | 25 | 26 | 27 | 28 | 29 | 30 | 31 |
| - | - | - | - | - | - | - | - | - | - | - | - | - | - | - | - | - | - | - | - | - | - | - | - | - | - | - | - | - | - | - | - |

[Month : Next >>](#)

Rental rates - Apartment-Flat - from 2 to 6 Person(s)

| Rates | Night | Weekend | week | 2 weeks | Month |
|--|-------|---------|---------|---------|-------|
|  Low season | - | - | \$575* | - | - |
|  Mid season | - | - | \$698* | - | - |
|  High season | - | - | \$821* | - | - |
|  Festive specials | - | - | \$1067* | - | - |

[Book now](#)

Booking conditions

• Reservation

- Payment made upon reservation : 50% of rental sum
- Payment balance : 3 weeks before the stay
- Deposit required : \$586*

• rentals

- Service charges included
- Day tax in addition
- Cleaning charge levy on departure : \$35*

[▶ Book now](#)

[▶ Contact the owner](#)

Accepted methods of payment

- Visa/Delta/Electron
- Switch/Maestro
- Bank transfer (wire)
- MasterCard/EuroCard
- Cirrus
- American Express
- Check
- PayPal

Contact directly the property owners

www.iha.com
Advert No.
27539
[>> Book now <<](#)

Contact

Spoken languages



* Converted at the rate indicated : €100 = \$117.29 = £89.59

Advert No. 27539

www.iha.com



[>> VACATION HOMES](#)

DIRECT BY OWNERS