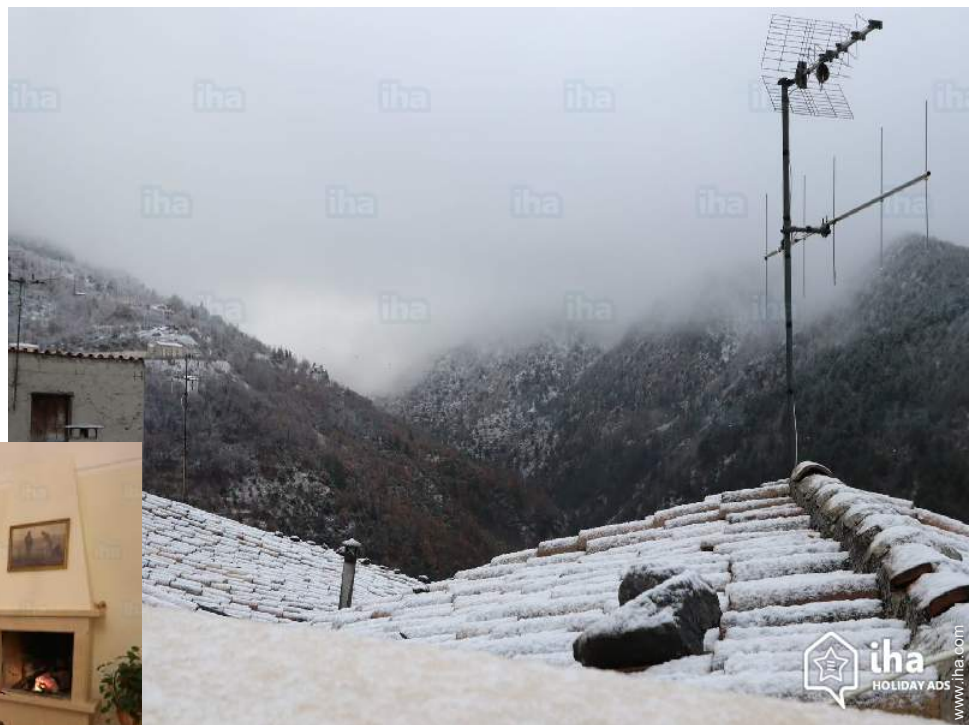


Vacation rental Majella National Park Village House

Beautiful and spacious apartment in a majestic building, consisting of a large kitchen with fireplace and living room. Large double room which can accommodate a baby cot. Large bathroom.



Village House, detached, 1 floor, shared entrance, in(on) a(an) Private property

Setting : enchanting, tranquil

Capacity : from 2 to 3 person(s)

Bedroom(s) : 1

Pacentro - L'Aquila Province (AQ) - Abruzzo

Italy

Advert No. 6874

www.iha.com



>> VACATION HOMES

DIRECT BY OWNERS

Vacation rental



Village House, detached, 1 floor, shared entrance, in(on) a(an) Private property

- **Ideal for family, group**
- **View :** panoramic, mountain, country side, village, rooftop, square
- **Setting :** enchanting, tranquil
- **Exposure :** North-east

" Maximum availability you will be given for any need. The apartment is well furnished and comfortable, where your privacy and peace you will be assured. While being located close to the main square, the apartment is well soundproofed and allows you to enjoy moments of relaxation. "

Surroundings & location



" The property is located in one of the ten most beautiful Villages of Italy characterized by architecture and the beauty of the landscape. Possibility of excursions in the mountains in Maiella National Park, visit the castle of Caldora dating from the beginning of 1200 and the Church of Santa Maria Maggiore. "

Leisure

- **Leisure activities less than 12 miles :**
Alpine skiing, cross-country skiing, off-piste skiing, ski-trekking, snowboarding, bathing, tennis, riding school, pathway/broadwalk, coastal/forest paths, hiking, rappel, rock climbing, mountain bike (path), horse trekking, donkey rides, ten-pin bowling, fishing
- **Supervised :**
Ski school, tennis school, riding school
- **Attractions and relaxation :**
Bar/pub, discotheque, restaurant, movie theater, park and garden, zoo/animal park, nature reserve, historical site, museum, theater, antiques & bric-a-brac, local craftstore, thermal baths, beauticians, fitness center

Surroundings

- **Locality :**
Ski slopes 9mi.
Ski lifts 15.5mi.
Sea/ocean >31mi.
Sandy beach >31mi.
Public swimming pool 6mi.
Public tennis court 6mi.
Windsurfing spots >31mi.
Surfing spots >31mi.
Lake 25mi.
Mountain range 6mi.
Marina >31mi.
Via ferrata-alpinism 6mi.
- **Amenities :**
Village center <165'
Bus stop / bus station <165'
Bike/mountain bike hire <165'
Car rental 6mi.
Ski hire store 15.5mi.
Breadstore 165'
Local stores
Supermarket <165'
High class retailers 6mi.
Hairdressing salon <165'
Mail office 165'
Bank <165'

Drugstore 330'
Hospital 6mi.
Dispensary 165'



kitchen



Summer



Advert No. 6874

www.iha.com





Fireplace

Interior

- **Receive up to :**

from 2 to 3 person(s)

- **Liveable floor area :**

700 Sq.ft.

- **Interior layout :**

1 bedroom(s), 1 bathroom, 1 toilets, living room 270 Sq.ft., Kitchen Area, cosy nook, tv den, loggia

- **Sleeps - bed(s) :**

1 full bed(s), 1 queen-size bed(s), 1 twin bed (s), 1 baby cradle, 1 possible extra bed(s)

- **Guest facilities :**

Fireplace, T.V., book collection, t.v points, wardrobe, hair dryer, partly air-conditioned, mobile cool air fan, Drapes, Rolling shutters

- **Appliances :**

Crockery/flatware, kitchen utensils, cafetiere, electric espresso coffee maker, gaz stove, oven, extractor hood, refridgerator, deep freeze, iron, ironing board

Exterior

- **Outside amenities :**

BBQ, yard table(s), 6 yard seat(s)



Surroundings

Services

- **washing :**

Sheets (1 X / per week), Towels (3 X / per week), Linen, Comforter(s), Comforter(s), Pillows

- **Single family home :**

Cleaning, Cleaning on departure

For your guidance

- **For your guidance**

Kids welcome

Pets accepted under certain conditions (ask the owner)

Cell phone network coverage

Water : hot/cold



Surroundings

Photo album - 1



Summer



kitchen



Fireplace



Surroundings

Photo album - 2



Surroundings



Surroundings



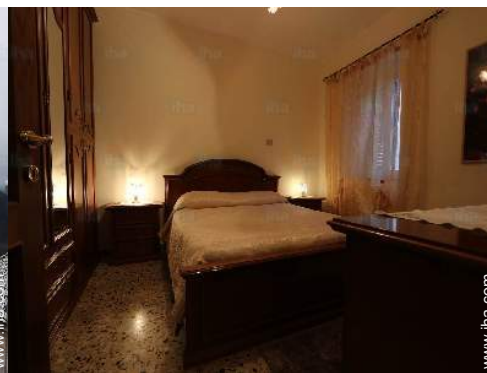
Surroundings



Culture



General




Route map



Location & Access

" The House is located in the centre of the village. Less than 100 metres from the restaurants, bars, pizzeria, Tobacconist, newsagent newspapers, post office, banks, and car parks. "

 GPS coordinates in degrees, minutes, seconds: Latitude 42° 3'2"N - Longitude 13°59'32"E (Dwelling)

Address

→ Via Santa Maria Maggiore
67030 Pacentro

• Airport Abruzzo

→ Pescara, Pescara Province, Abruzzo, Italy
→ Distance : 37,3mi.
→ Time : 50'

• Freeway (exit) Pratola Peligna-Sulmona

→ Pratola Peligna, L'Aquila Province, Abruzzo, Italy
→ Distance : 9mi.
→ Time : 15'

• Railroad station Sulmona

→ Sulmona, L'Aquila Province, Abruzzo, Italy
→ Distance : 6mi.
→ Time : 15'

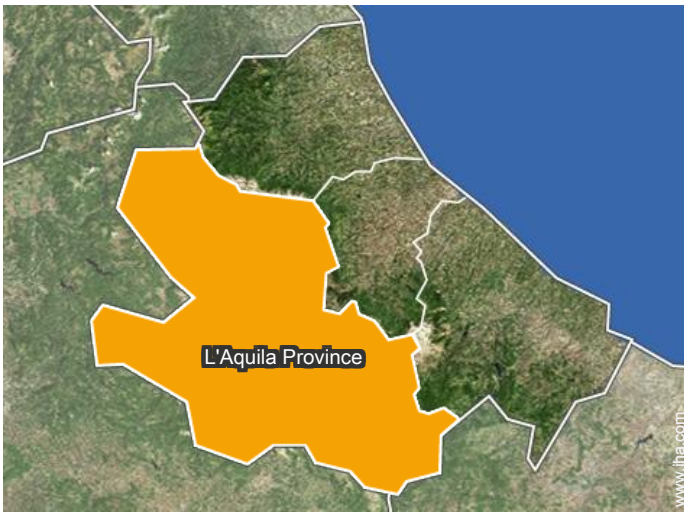
• Sulmona : (6mi.)

Contact

Spoken languages



Location



Vacation rental Majella National Park - Italy Village House

8
[Book now](#)

Availability calendar - from : june 2019

June	Sa	Su	M	Tu	W	Th	F	Sa	Su	M	Tu	W	Th	F	Sa	Su	M	Tu	W	Th	F	Sa	Su	M	Tu	W	Th	F	Sa	Su	
2019	1	2	3	4	5	6	7	8	9	10	11	12	13	14	15	16	17	18	19	20	21	22	23	24	25	26	27	28	29	30	
																										-	-	-	-	-	-

Jul	M	Tu	W	Th	F	Sa	Su	M	Tu	W	Th	F	Sa	Su	M	Tu	W	Th	F	Sa	Su	M	Tu	W	Th	F	Sa	Su	M	Tu	W
2019	1	2	3	4	5	6	7	8	9	10	11	12	13	14	15	16	17	18	19	20	21	22	23	24	25	26	27	28	29	30	31
	-	-	-	-	-	-	-	-	-	-	-	-	-	-	-	-	-	-	-	-	-	-	-	-	-	-	-	-	-	-	-

Aug	Th	F	Sa	Su	M	Tu	W	Th	F	Sa	Su	M	Tu	W	Th	F	Sa	Su	M	Tu	W	Th	F	Sa	Su	M	Tu	W	Th	F	Sa
2019	1	2	3	4	5	6	7	8	9	10	11	12	13	14	15	16	17	18	19	20	21	22	23	24	25	26	27	28	29	30	31
	-	-	-	-	-	-	-	-	-	-	-	-	-	-	-	-	-	-	-	-	-	-	-	-	-	-	-	-	-	-	-

Sep	Su	M	Tu	W	Th	F	Sa	Su	M	Tu	W	Th	F	Sa	Su	M	Tu	W	Th	F	Sa	Su	M	Tu	W	Th	F	Sa	Su	M
2019	1	2	3	4	5	6	7	8	9	10	11	12	13	14	15	16	17	18	19	20	21	22	23	24	25	26	27	28	29	30
	-	-	-	-	-	-	-	-	-	-	-	-	-	-	-	-	-	-	-	-	-	-	-	-	-	-	-	-	-	-

Oct	Tu	W	Th	F	Sa	Su	M	Tu	W	Th	F	Sa	Su	M	Tu	W	Th	F	Sa	Su	M	Tu	W	Th	F	Sa	Su	M	Tu	W	Th
2019	1	2	3	4	5	6	7	8	9	10	11	12	13	14	15	16	17	18	19	20	21	22	23	24	25	26	27	28	29	30	31
	-	-	-	-	-	-	-	-	-	-	-	-	-	-	-	-	-	-	-	-	-	-	-	-	-	-	-	-	-	-	-

Nov	F	Sa	Su	M	Tu	W	Th	F	Sa	Su	M	Tu	W	Th	F	Sa	Su	M	Tu	W	Th	F	Sa	Su	M	Tu	W	Th	F	Sa
2019	1	2	3	4	5	6	7	8	9	10	11	12	13	14	15	16	17	18	19	20	21	22	23	24	25	26	27	28	29	30
	-	-	-	-	-	-	-	-	-	-	-	-	-	-	-	-	-	-	-	-	-	-	-	-	-	-	-	-	-	-

Dec	Su	M	Tu	W	Th	F	Sa	Su	M	Tu	W	Th	F	Sa	Su	M	Tu	W	Th	F	Sa	Su	M	Tu	W	Th	F	Sa	Su	M	Tu
2019	1	2	3	4	5	6	7	8	9	10	11	12	13	14	15	16	17	18	19	20	21	22	23	24	25	26	27	28	29	30	31
	-	-	-	-	-	-	-	-	-	-	-	-	-	-	-	-	-	-	-	-	-	-	-	-	-	-	-	-	-	-	-

Jan	W	Th	F	Sa	Su	M	Tu	W	Th	F	Sa	Su	M	Tu	W	Th	F	Sa	Su	M	Tu	W	Th	F	Sa	Su	M	Tu	W	Th	F
2020	1	2	3	4	5	6	7	8	9	10	11	12	13	14	15	16	17	18	19	20	21	22	23	24	25	26	27	28	29	30	31
	-	-	-	-	-	-	-	-	-	-	-	-	-	-	-	-	-	-	-	-	-	-	-	-	-	-	-	-	-	-	-

Feb	Sa	Su	M	Tu	W	Th	F	Sa	Su	M	Tu	W	Th	F	Sa	Su	M	Tu	W	Th	F	Sa							
2020	1	2	3	4	5	6	7	8	9	10	11	12	13	14	15	16	17	18	19	20	21	22	23	24	25	26	27	28	29
	-	-	-	-	-	-	-	-	-	-	-	-	-	-	-	-	-	-	-	-	-	-	-	-	-	-	-	-	-

Mar	Su	M	Tu	W	Th	F	Sa	Su	M	Tu	W	Th	F	Sa	Su	M	Tu	W	Th	F	Sa	Su	M	Tu	W	Th	F	Sa	Su	M	Tu
2020	1	2	3	4	5	6	7	8	9	10	11	12	13	14	15	16	17	18	19	20	21	22	23	24	25	26	27	28	29	30	31
	-	-	-	-	-	-	-	-	-	-	-	-	-	-	-	-	-	-	-	-	-	-	-	-	-	-	-	-	-	-	-

Vacation rental
L'Aquila Province - Abruzzo
Village House

9

[Book now](#)




Availability calendar - from : march 2020

Apr	W	Th	F	Sa	Su	M	Tu	W	Th	F	Sa	Su	M	Tu	W	Th	F	Sa	Su	M	Tu	W	Th	F	Sa	Su	M	Tu	W	Th
2020	1	2	3	4	5	6	7	8	9	10	11	12	13	14	15	16	17	18	19	20	21	22	23	24	25	26	27	28	29	30
	-	-	-	-	-	-	-	-	-	-	-	-	-	-	-	-	-	-	-	-	-	-	-	-	-	-	-	-	-	-

May	F	Sa	Su	M	Tu	W	Th	F	Sa	Su	M	Tu	W	Th	F	Sa	Su	M	Tu	W	Th	F	Sa	Su							
2020	1	2	3	4	5	6	7	8	9	10	11	12	13	14	15	16	17	18	19	20	21	22	23	24	25	26	27	28	29	30	31
	-	-	-	-	-	-	-	-	-	-	-	-	-	-	-	-	-	-	-	-	-	-	-	-	-	-	-	-	-		

[Month : Next >>](#)

Rental rates - Village House - from 2 to 3 Person(s)

Rates	Night	Weekend	week	2 weeks	Month
 Low season	\$58* ↓ > 2	-	\$409*	\$701*	-
 Mid season	\$70* ↓ > 2	-	\$491*	\$818*	-
 High season	\$82* ↓ > 2	-	\$584*	\$935*	-

↓ Reducing rates > Minimum Night

[Book now](#)

Booking conditions

• rentals

→ Anticipated supplement for :
- supplementary bed(s)

Accepted methods of payment

• Bank transfer (wire) • Check • Draft • Travellers Cheques • Cash

[▶ Book now](#)

[▶ Contact the owner](#)

Contact directly the property owners

www.iha.com
Advert No.
6874
[>> Book now <<](#)

Contact

Spoken languages



* Converted at the rate indicated : €100 = \$116.85 = £89

Advert No. 6874

www.iha.com



[>> VACATION HOMES](#)

DIRECT BY OWNERS