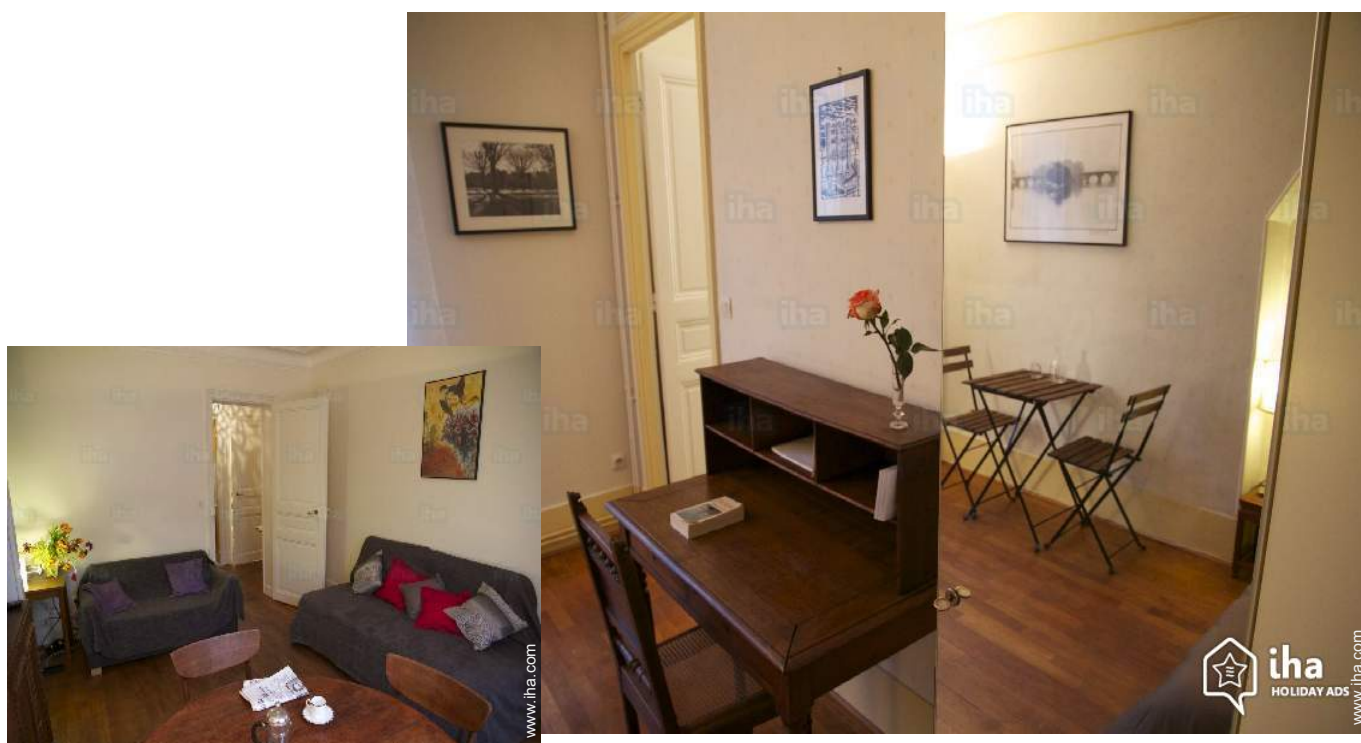


Vacation rental Paris 5th district Apartment-Flat

IDEAL FOR DISCOVER PARIS IN FAMILY or FOR 2 COUPLES,
Apartment with BALCON VERY BRIGHT in QUARTIER CENTRAL but
RUE CALME, a few minutes to PIED of MOUFFETARD Street and Jardin
du LUXEMBOURG, ACCESS FACILE AÉROPORTS, GARES AND
DISNEYLAND



Apartment-Flat 6nd floor, shared
entrance, in(on) a(an) Restored apartment
house/building 6 floors

Setting : characteristic, cultural

Capacity : from 1 to 6 person(s)

Bedroom(s) : 2

Room(s) : 3

Paris 5th district - Paris (75) - Île de France

France

Reservation : +33 (0) 635591029 (France)

Advert No. 17205

www.ih.com



Vacation rental



Apartment-Flat 6nd floor, shared entrance, in(on) a(an) Restored apartment house/ building 6 floors

- **Ideal for all age groups, family**
- **View :** courtyard, city, rooftop
- **Setting :** characteristic, cultural
- **Exposure :** South

" PARIS TYPICAL APARTMENT on the 5th floor of a stone building, with ASCENSEUR, DIGICODE and BALCON full south. Very BRIGHT, located in CALME street and a LIVING neighborhood steeped in history. NEER DECORATION, parquet, mouldings, ALL CONFORT: independent central heating, unlimited access to high-speed internet, WIFI, unlimited phone, LED cable TV, DVD player, books, company games. AN IDEAL STARTING POINT TO DISCOVER PARIS. A few MINUTES IN PIED of the medieval district MOUFFETARD with its pedestrian street, its old houses, its restaurants, its daily market and supermarkets and the Jardin du LUXEMBOURG, PANTHÉON, SORBONNE, bid ST MICHEL and ST GERMAIN. BUS NOMBREUX (21, 91, 83, 27, 47) AT THE PIED OF THE BUILDING to access THE LOUVRE, ORSAY, CHÂTELET, MONTPARNASSE district, JARDIN DES PLANTES, CHAMPS-ELYSEES,... METRO: The Goblins or Censier-Daubenton (Line 7) and RER B Port-Royal. CHARGES INCLUDING HOUSE LINGE (30 euros a set), FINAL OBLIGATORY MÉNAGE (40 euros). The apartment includes 2 CHAMBRES PARTED with a bed for 2 in each, SALON with dining table, a sofa and a bed for 1P, CUISINE (Plate, Microwave, Refrigerator, Freezer, Italian Electric Cafeteria, Electric Kettle, Toast, Washing machine), 1 BATHROOM SALLE (Bath with shower, sink and toilet), BALCON with table and 2 chairs. BEBEL IIT to available "

Surroundings & location



City



Festival



Culture

" The pluses: Typical French and foreign RESTAURANTS NOMBREUX and CINEMAS are in the area. Plans: The DELICIOUS BOULANGERIE (Alexis Breads) IN THE RUE COIN (excellent croissants and breads) and the Paris MARKET of PORT-ROYAL less than 100 meters away. THE LOCALISATION is IDEALE (PIED OR BUS) for CULTURAL, HISTORY and UNIVERSITY locations. And for the ENFANTS, in addition to the Jardin du LUXEMBOURG, the GREAT GALLERY OF THE EVOLUTION and the JARDIN ZOO of the PLANTS a 20 minute walk (or a few minutes by bus) and also DISNEYLAND easy access by the RER B Port-Royal. "

Leisure

- **Leisure activities less than 12 miles :**

Ten-pin bowling

- **Attractions and relaxation :**

Bar/pub, restaurant, movie theater, park and garden, leisure park, zoo/animal park, art gallery, historical site, museum, theater, opera house, festivals, antiques & bric-a-brac, local craftstore, cellar and wine tasting, sauna, steam baths, beauticians, fitness center

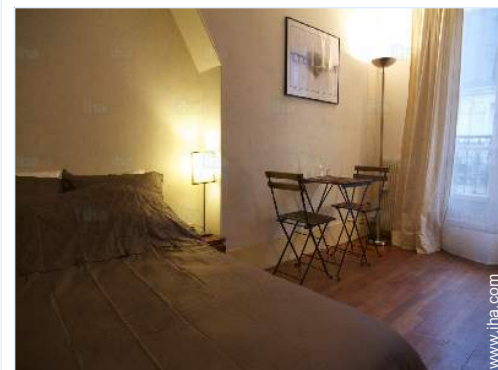
Surroundings

- **Locality :**

Public swimming pool 0.62mi.

- **Amenities :**

Downtown <165'
Bus stop / bus station <165'
Subway station 0.3mi.
Breadstore <165'
Caterer <165'
Local stores <165'
Supermarket 0.3mi.
Hairdressing salon <165'
Mail office 0.5mi.
Bank 0.5mi.
ATM 0.5mi.
Drugstore <165'
Doctor <165'
Nurse 0.5mi.
Hospital 0.5mi.



master bedroom



living room



master bedroom

Exterior

- **Outside accommodation :**
Balcony 85 Sq.ft.
- **Outside amenities :**
Yard table(s), 2 yard seat(s)



bedroom

Interior

- **Receive up to :**
from 1 to 6 person(s) (6 adults)
- **Liveable floor area :**
600 Sq.ft.
- **Interior layout :**
3 Room(s), 2 bedroom(s), 1 bathroom, 1 toilets, living room, separate kitchen, dining room, office
- **Sleeps - bed(s) :**
2 full bed(s), 1 sleeper sofa(s) 2 pers, 1 twin bed(s), 1 baby cradle
- **Guest facilities :**
Elevator, T.V., DVD player, board games, phone, cable/satelite, internet access, high speed internet access, wifi, wardrobe, cupboard, Hanging wardrobe, hair dryer, mobile cool air fan, central heating, Drapes, digipad entry system
- **Appliances :**
Crockery/flatware, kitchen utensils, electric coffee maker, electric kettle, toaster, electric hobs, micro-wave oven, refridgerator, deep freeze, washing machine, vacuum cleaner, iron, ironing board

Services

- **washing :**
Sheets supplement (+\$33*), Towels, Linen, Comforter(s), Comforter(s), Pillows
- **Single family home :**
Cleaning on departure supplement (+\$44*)
- **Personnel :**
Baby sitting supplement (+\$17*)

For your guidance

- **For your guidance**
Kids welcome
Non smoking rental, cell phone network coverage
Water : hot/cold



living room

Photo album - 1



living room



master bedroom



master bedroom



living room



bedroom

Photo album - 2



toilets



bathroom



Interior layout

separate kitchen



balcony



the apartment house/building

Photo album - 3



subway station



historical site



local stores



nearby



historical site

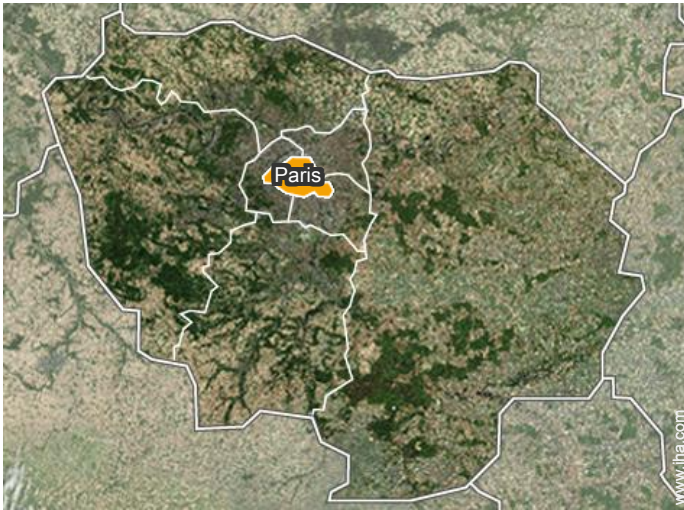


park and garden



leisure park

Location



Location & Access

" Ideally located in the Latin Quarter, a short walk from the Luxembourg Garden, the Pantheon, the Sorbonne and Boulevard Saint Michel and Saint Germain. Many buses (21, 91, 83, 27, 47) at the foot of the building to directly access the Louvre Museum, Orsay, Châtelet, Montparnasse district, Plant Garden, Champs-Élysées... Metro Les Gobelins or Censier-Daubenton (Line 7) and RER B Port-Royal. Taxi and velib station nearby "



GPS coordinates in degrees, minutes, seconds: Latitude 48°50'17"N - Longitude 2°20'47"E ([Dwelling](#))

Address

→ 12 rue Flatters
75005 Paris 5th district

→ Paris, Paris, Île de France, France
→ Distance : 1.25mi.
→ Time : 20'

• Airport Paris Orly

→ Paris, Paris, Île de France, France
→ Distance : 8mi.
→ Time : 45'

• Airport Paris Charles de Gaulle

→ Paris, Paris, Île de France, France
→ Distance : 15mi.
→ Time : 1h

• Railroad station Paris Gare de Lyon

Contact

Spoken languages



Vacation rental Paris - Île de France Apartment-Flat

Availability calendar - from : september 2019

Sep	Su	M	Tu	W	Th	F	Sa	Su	M	Tu	W	Th	F	Sa	Su	M	Tu	W	Th	F	Sa	Su	M							
2019	1	2	3	4	5	6	7	8	9	10	11	12	13	14	15	16	17	18	19	20	21	22	23	24	25	26	27	28	29	30

Oct	Tu	W	Th	F	Sa	Su	M	Tu	W	Th	F	Sa	Su	M	Tu	W	Th	F	Sa	Su	M	Tu	W	Th	F	Sa	Su	M	Tu	W	Th
2019	1	2	3	4	5	6	7	8	9	10	11	12	13	14	15	16	17	18	19	20	21	22	23	24	25	26	27	28	29	30	31
	-	-	-	-	-	-	-	-	-	-	-	-	-	-	-	-	-	-	-	-	-	-	-	-	-	-	-	-	-	-	-

Nov	F	Sa	Su	M	Tu	W	Th	F	Sa	Su	M	Tu	W	Th	F	Sa	Su	M	Tu	W	Th	F	Sa							
2019	1	2	3	4	5	6	7	8	9	10	11	12	13	14	15	16	17	18	19	20	21	22	23	24	25	26	27	28	29	30
	-	-	-	-	-	-	-	-	-	-	-	-	-	-	-	-	-	-	-	-	-	-	-	-	-	-	-	-	-	-

Dec	Su	M	Tu	W	Th	F	Sa	Su	M	Tu	W	Th	F	Sa	Su	M	Tu	W	Th	F	Sa	Su	M	Tu							
2019	1	2	3	4	5	6	7	8	9	10	11	12	13	14	15	16	17	18	19	20	21	22	23	24	25	26	27	28	29	30	31
	-	-	-	-	-	-	-	-	-	-	-	-	-	-	-	-	-	-	-	-	-	-	-	-	-	-	-	-	-	-	

Jan	W	Th	F	Sa	Su	M	Tu	W	Th	F	Sa	Su	M	Tu	W	Th	F	Sa	Su	M	Tu	W	Th	F							
2020	1	2	3	4	5	6	7	8	9	10	11	12	13	14	15	16	17	18	19	20	21	22	23	24	25	26	27	28	29	30	31
	-	-	-	-	-	-	-	-	-	-	-	-	-	-	-	-	-	-	-	-	-	-	-	-	-	-	-	-	-	-	

Feb	Sa	Su	M	Tu	W	Th	F	Sa	Su	M	Tu	W	Th	F	Sa	Su	M	Tu	W	Th	F	Sa							
2020	1	2	3	4	5	6	7	8	9	10	11	12	13	14	15	16	17	18	19	20	21	22	23	24	25	26	27	28	29
	-	-	-	-	-	-	-	-	-	-	-	-	-	-	-	-	-	-	-	-	-	-	-	-	-	-	-	-	-

Mar	Su	M	Tu	W	Th	F	Sa	Su	M	Tu	W	Th	F	Sa	Su	M	Tu	W	Th	F	Sa	Su	M	Tu							
2020	1	2	3	4	5	6	7	8	9	10	11	12	13	14	15	16	17	18	19	20	21	22	23	24	25	26	27	28	29	30	31
	-	-	-	-	-	-	-	-	-	-	-	-	-	-	-	-	-	-	-	-	-	-	-	-	-	-	-	-	-	-	

Apr	W	Th	F	Sa	Su	M	Tu	W	Th	F	Sa	Su	M	Tu	W	Th	F	Sa	Su	M	Tu	W	Th							
2020	1	2	3	4	5	6	7	8	9	10	11	12	13	14	15	16	17	18	19	20	21	22	23	24	25	26	27	28	29	30
	-	-	-	-	-	-	-	-	-	-	-	-	-	-	-	-	-	-	-	-	-	-	-	-	-	-	-	-	-	-

May	F	Sa	Su	M	Tu	W	Th	F	Sa	Su	M	Tu	W	Th	F	Sa	Su	M	Tu	W	Th	F	Sa	Su							
2020	1	2	3	4	5	6	7	8	9	10	11	12	13	14	15	16	17	18	19	20	21	22	23	24	25	26	27	28	29	30	31
	-	-	-	-	-	-	-	-	-	-	-	-	-	-	-	-	-	-	-	-	-	-	-	-	-	-	-	-	-	-	

June	M	Tu	W	Th	F	Sa	Su	M	Tu	W	Th	F	Sa	Su	M	Tu	W	Th	F	Sa	Su	M	Tu							
2020	1	2	3	4	5	6	7	8	9	10	11	12	13	14	15	16	17	18	19	20	21	22	23	24	25	26	27	28	29	30
	-	-	-	-	-	-	-	-	-	-	-	-	-	-	-	-	-	-	-	-	-	-	-	-	-	-	-	-	-	-

 Reserved  Mid season



Vacation rental
Paris 5th district - France
Apartment-Flat

9

[Book now](#)

Availability calendar - from : june 2020

Jul	W	Th	F	Sa	Su	M	Tu	W	Th	F	Sa	Su	M	Tu	W	Th	F	Sa	Su	M	Tu	W	Th	F							
2020	1	2	3	4	5	6	7	8	9	10	11	12	13	14	15	16	17	18	19	20	21	22	23	24	25	26	27	28	29	30	31
-	-	-	-	-	-	-	-	-	-	-	-	-	-	-	-	-	-	-	-	-	-	-	-	-	-	-	-	-	-	-	

Aug	Sa	Su	M	Tu	W	Th	F	Sa	Su	M	Tu	W	Th	F	Sa	Su	M	Tu	W	Th	F	Sa	Su	M							
2020	1	2	3	4	5	6	7	8	9	10	11	12	13	14	15	16	17	18	19	20	21	22	23	24	25	26	27	28	29	30	31
-	-	-	-	-	-	-	-	-	-	-	-	-	-	-	-	-	-	-	-	-	-	-	-	-	-	-	-	-	-	-	



Reserved



Mid season

[Month : Next >>](#)

Rental rates - Apartment-Flat - from 1 to 6 Person(s)

Rates	Night	Weekend	week	2 weeks	Month
Mid season	\$143* > 4	-	\$990*	-	-
High season	\$165* > 5	-	\$1045*	-	-

> Minimum Night

[Book now](#)

Booking conditions

• Reservation

- Payment made upon reservation : 30% of rental sum
- Payment balance : on handing over the keys
- Deposit required : \$220*

• rentals

- Service charges included
- Day tax included
- Cleaning charge levy on departure : \$44*
- Anticipated supplement for : - supplementary bed(s)

Accepted methods of payment

- Bank transfer (wire) • Check • Cash

[▶ Book now](#)

[▶ Contact the owner](#)

Contact directly the property owners

www.iha.com

Advert No.

17205

[>> Book now <<](#)

Contact

Spoken languages



* Converted at the rate indicated : €100 = \$110 = £91

Advert No. 17205

www.iha.com



[>> VACATION HOMES](#)

DIRECT BY OWNERS