

# Vacation rental Puerto de la Cruz "Ed. Lavaggi"

Apartments in the heart of Puerto de la Cruz, the most typical and characteristic country of Tenerife ... Tropical climate in Spain!

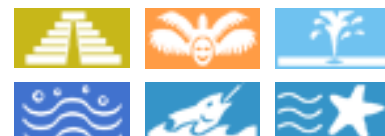


**Studio Flat** top floor, shared entrance,  
in(on) a(an) Estate 8 floors

Setting : tropical, exotic

Capacity : from 1 to 4 person(s)  
Room(s) : 1

Puerto de la Cruz - Tenerife - Santa Cruz de Tenerife Province  
Canary Islands



Advert No. 76563

[www.iha.com](http://www.iha.com)



>> VACATION HOMES

DIRECT BY OWNERS

## Vacation rental



Studio Flat top floor, shared entrance, in(on) a(an) Estate 8 floors

- **Ideal for all age groups, senior(s)**
- **View :** panoramic, unobscured, sea/ ocean, mountain, fantastic sunset, nightlights
- **Setting :** tropical, exotic
- **Exposure :** South

" In the attic of a beautiful structure in the Centre of Puerto de la Cruz, a former private House today, I have two/three apartments (Studios) with sea view or mountain view, with huge terrace sea view condominium, equipped and free use for guests, comfortable and just a few metres from each service, bars, restaurants, cafés, and within walking distance of the promenade along the famous lakes Martinez, municipal swimming pools of sea water filtered and equipped, and to shopping and evening entertainment venues. But at the same time quiet and peaceful, the attic of this high-rise building of 8 floors. "

## Surroundings & location



" near casa also naturalistic parks, beaches, botanical gardens, evening llocali, bistros, clubs, Latin American dance, live music, public gardens, artificial lakes and natural coves, shopping centres, craft, folk performances and cultural events "

### Leisure

- **Leisure activities less than 12 miles :**  
Bathing, snorkelling, scuba diving, tennis, coastal/forest paths, hiking
- **Attractions and relaxation :**  
Bar/pub, discotheque, restaurant, park and garden, leisure park, zoo/animal park, sea world, historical site, museum, festivals, antiques & bric-a-brac, cellar and wine tasting, casino, natural spring baths, health spa, beauticians

### Surroundings

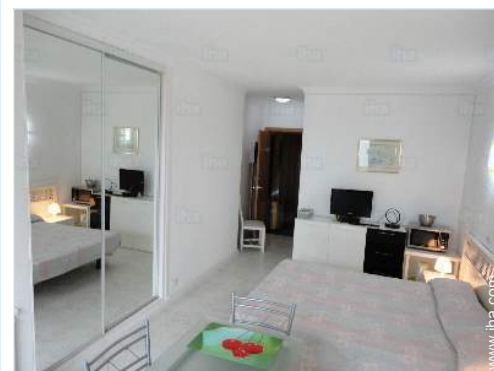
- **Locality :**  
Heated swimming pool 990'  
Sea/ocean 660'  
Sandy beach 0.3mi.  
Shingle beach 660'  
Rocky beach 660'  
Sea inlet 0.3mi.  
Public swimming pool 0.3mi.  
Surfing spots 0.3mi.  
Cliff 990'  
Slipway 0.3mi.
- **Amenities :**  
Downtown 330'  
Bus stop / bus station 165'  
Car rental 660'  
Breadstore <165'  
Local stores 330'  
Supermarket 660'  
High class retailers 990'  
Hairdressing salon 165'  
Internet cafe <165'  
Bank 330'  
Hospital 330'



façade



Interior layout



overall view



the apartment

### Interior

- **Receive up to :**  
from 1 to 4 person(s) (2 adults, 2 kids)
- **Liveable floor area :**  
430 Sq.ft.
- **Interior layout :**  
1 Room(s), sleeping den, 1 bathroom, 1 shower room, 1 toilets, living room, Kitchen Area, dining area, cosy nook, tv den
- **Sleeps - bed(s) :**  
3 twin bed(s)
- **Guest facilities :**  
Elevator, T.V., t.v points, cable/satelite, wardrobe, mobile cool air fan, Drapes, entry phone system, fire alarm
- **Appliances :**  
Crockery/flatware, kitchen utensils, cafetiere, electric kettle, electric stove, electric hobs, mini-oven, micro-wave oven, refridgerator, washing machine, iron, ironing board

### Exterior

- **Outside accommodation :**  
Terrace 194 Sq.ft., covered terrace 85 Sq.ft., sundeck > 2,150 Sq.ft.
- **Outside amenities :**  
Yard table(s), 3 yard seat(s), sun recliner(s), outside shower facilities



interior

### Services

- **washing :**  
Sheets, Towels, Linen, Comforter(s), Pillows
- **Single family home :**  
Cleaning on departure supplement (+\$25\*)

### For your guidance

- **For your guidance**  
Cell phone network coverage  
Water : hot/cold  
Local voltage supply : 220-240V / 50Hz  
Electricity supply : mains



bathroom

Photo album - 1



façade



overall view



Interior layout



the apartment



bathroom

Photo album - 2



interior



seaside pursuits nearby



the apartment



aerial view



bathing



sandy beach



nearby



view from the terrace



view from the apartment



View from the property




terrace

### Location



### Location & Access

" Avenida family Bethencour Y Molina, Puerto de la Cruz, Tenerife, Canarie, Spagna "

 GPS coordinates in degrees, minutes, seconds: Latitude 28°24'57"N - Longitude 16°32'46"W (Dwelling)

#### Address

→ Av. Fam. Bethencourt y Molina  
38400 Puerto de la Cruz

#### • Airport Tenerife Norte

→ Santa Cruz de Tenerife, Tenerife, Santa Cruz de Tenerife Province, Canary Islands  
→ Distance : 9mi.  
→ Time : 20'

#### • Airport Tenerife Sur

→ Santa Cruz de Tenerife, Tenerife, Santa Cruz de Tenerife Province, Canary Islands  
→ Distance : 56mi.  
→ Time : 1h

#### • Bus station Puerto de la Cruz

→ Puerto de la Cruz, Tenerife, Santa Cruz

de Tenerife Province, Canary Islands

→ Distance : 0.5mi.

• Puerto de la Cruz : (1.25mi.)

### Contact

Spoken languages



# Vacation rental

## Puerto de la Cruz - Canary Islands

### "Ed. Lavaggi"

7  
[Book now](#)

#### Availability calendar - from : february 2018

Feb	Th	F	Sa	Su	M	Tu	W	Th	F	Sa	Su	M	Tu	W	Th	F	Sa	Su	M	Tu	W	Th	F	Sa	Su	M	Tu	W
2018	1	2	3	4	5	6	7	8	9	10	11	12	13	14	15	16	17	18	19	20	21	22	23	24	25	26	27	28

Mar	Th	F	Sa	Su	M	Tu	W	Th	F	Sa	Su	M	Tu	W	Th	F	Sa	Su	M	Tu	W	Th	F	Sa	Su	M	Tu	W	Th	F	Sa
2018	1	2	3	4	5	6	7	8	9	10	11	12	13	14	15	16	17	18	19	20	21	22	23	24	25	26	27	28	29	30	31
	-	-	-	-	-	-	-	-	-	-	-	-	-	-	-	-	-	-	-	-	-	-	-	-	-	-	-	-	-	-	

Apr	Su	M	Tu	W	Th	F	Sa	Su	M	Tu	W	Th	F	Sa	Su	M	Tu	W	Th	F	Sa	Su	M	Tu	W	Th	F	Sa	Su	M
2018	1	2	3	4	5	6	7	8	9	10	11	12	13	14	15	16	17	18	19	20	21	22	23	24	25	26	27	28	29	30
	-	-	-	-	-	-	-	-	-	-	-	-	-	-	-	-	-	-	-	-	-	-	-	-	-	-	-	-	-	

May	Tu	W	Th	F	Sa	Su	M	Tu	W	Th	F	Sa	Su	M	Tu	W	Th	F	Sa	Su	M	Tu	W	Th	F	Sa	Su	M	Tu	W	Th
2018	1	2	3	4	5	6	7	8	9	10	11	12	13	14	15	16	17	18	19	20	21	22	23	24	25	26	27	28	29	30	31
	-	-	-	-	-	-	-	-	-	-	-	-	-	-	-	-	-	-	-	-	-	-	-	-	-	-	-	-	-	-	

June	F	Sa	Su	M	Tu	W	Th	F	Sa	Su	M	Tu	W	Th	F	Sa	Su	M	Tu	W	Th	F	Sa							
2018	1	2	3	4	5	6	7	8	9	10	11	12	13	14	15	16	17	18	19	20	21	22	23	24	25	26	27	28	29	30
	-	-	-	-	-	-	-	-	-	-	-	-	-	-	-	-	-	-	-	-	-	-	-	-	-	-	-	-	-	

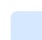
Jul	Su	M	Tu	W	Th	F	Sa	Su	M	Tu	W	Th	F	Sa	Su	M	Tu	W	Th	F	Sa	Su	M	Tu	W	Th	F	Sa	Su	M	Tu
2018	1	2	3	4	5	6	7	8	9	10	11	12	13	14	15	16	17	18	19	20	21	22	23	24	25	26	27	28	29	30	31
	-	-	-	-	-	-	-	-	-	-	-	-	-	-	-	-	-	-	-	-	-	-	-	-	-	-	-	-	-		

Aug	W	Th	F	Sa	Su	M	Tu	W	Th	F	Sa	Su	M	Tu	W	Th	F	Sa	Su	M	Tu	W	Th	F	Sa	Su	M	Tu	W	Th	F
2018	1	2	3	4	5	6	7	8	9	10	11	12	13	14	15	16	17	18	19	20	21	22	23	24	25	26	27	28	29	30	31
	-	-	-	-	-	-	-	-	-	-	-	-	-	-	-	-	-	-	-	-	-	-	-	-	-	-	-	-	-	-	

Sep	Sa	Su	M	Tu	W	Th	F	Sa	Su	M	Tu	W	Th	F	Sa	Su	M	Tu	W	Th	F	Sa	Su							
2018	1	2	3	4	5	6	7	8	9	10	11	12	13	14	15	16	17	18	19	20	21	22	23	24	25	26	27	28	29	30
	-	-	-	-	-	-	-	-	-	-	-	-	-	-	-	-	-	-	-	-	-	-	-	-	-	-	-	-	-	

Oct	M	Tu	W	Th	F	Sa	Su	M	Tu	W	Th	F	Sa	Su	M	Tu	W	Th	F	Sa	Su	M	Tu	W							
2018	1	2	3	4	5	6	7	8	9	10	11	12	13	14	15	16	17	18	19	20	21	22	23	24	25	26	27	28	29	30	31
	-	-	-	-	-	-	-	-	-	-	-	-	-	-	-	-	-	-	-	-	-	-	-	-	-	-	-	-	-		

Nov	Th	F	Sa	Su	M	Tu	W	Th	F	Sa	Su	M	Tu	W	Th	F	Sa	Su	M	Tu	W	Th	F							
2018	1	2	3	4	5	6	7	8	9	10	11	12	13	14	15	16	17	18	19	20	21	22	23	24	25	26	27	28	29	30
	-	-	-	-	-	-	-	-	-	-	-	-	-	-	-	-	-	-	-	-	-	-	-	-	-	-	-	-	-	

 Mid season

Vacation rental  
Tenerife - Santa Cruz de Tenerife Province  
"Ed. Lavaggi"

8  
[Book now](#)

Availability calendar - from : november 2018

Dec	Sa	Su	M	Tu	W	Th	F	Sa	Su	M	Tu	W	Th	F	Sa	Su	M	Tu	W	Th	F	Sa	Su	M							
2018	1	2	3	4	5	6	7	8	9	10	11	12	13	14	15	16	17	18	19	20	21	22	23	24	25	26	27	28	29	30	31
-	-	-	-	-	-	-	-	-	-	-	-	-	-	-	-	-	-	-	-	-	-	-	-	-	-	-	-	-	-	-	

Jan	Tu	W	Th	F	Sa	Su	M	Tu	W	Th	F	Sa	Su	M	Tu	W	Th	F	Sa	Su	M	Tu	W	Th							
2019	1	2	3	4	5	6	7	8	9	10	11	12	13	14	15	16	17	18	19	20	21	22	23	24	25	26	27	28	29	30	31
-	-	-	-	-	-	-	-	-	-	-	-	-	-	-	-	-	-	-	-	-	-	-	-	-	-	-	-	-	-	-	

Mid season

[Month : Next >>](#)

Rental rates - Studio Flat - from 1 to 4 Person(s)

Rates	Night	Weekend	week	2 weeks	Month
<input type="checkbox"/> Mid season	-	-	\$309*	\$494*	\$617*

[Book now](#)

Booking conditions

- **Reservation**  
→ Payment made upon reservation : 30% of rental sum
- **rentals**  
→ Service charges to be added  
→ Cleaning charge levy on departure : \$25\*

Accepted methods of payment

- Bank transfer (wire) • PayPal • Cash

[▶ Book now](#)

[▶ Contact the owner](#)

Contact directly the property owners

[www.iha.com](http://www.iha.com)  
Advert No.  
76563  
[>> Book now <<](#)

Contact

Spoken languages



\* Converted at the rate indicated : €100 = \$123.46 = £88.94

Advert No. 76563

[www.iha.com](http://www.iha.com)



[>> VACATION HOMES](#)

[DIRECT BY OWNERS](#)