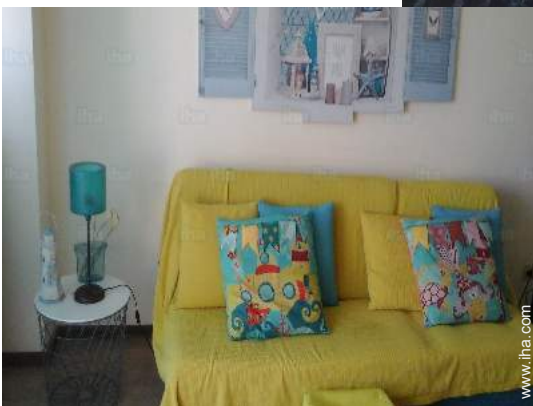


Vacation rental Quarteira "Edf. Cambra-Mar"



Apartment-Flat 8nd floor, separate entrance, in(on) a(an) Apartment house/ building 9 floors

Setting : ocean, serene

Capacity : from 4 to 5 person(s)

Bedroom(s) : 1

Room(s) : 4

Quarteira - Algarve

Portugal

Advert No. 20621

www.iha.com



>> VACATION HOMES

DIRECT BY OWNERS

Vacation rental

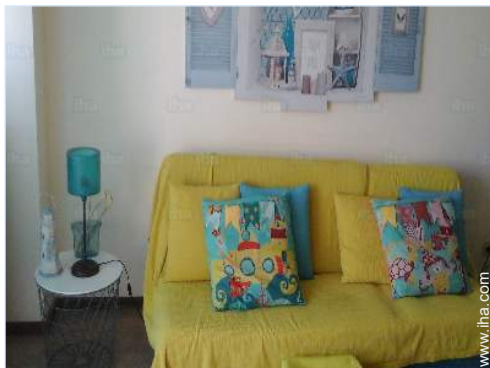


Apartment-Flat 8nd floor, separate entrance, in(on) a(an) Apartment house/building 9 floors

- **Ideal for all age groups, family**
- **View** : panoramic, sea/ocean, street/avenue
- **Setting** : ocean, serene
- **Exposure** : South

Assets

- **Swimming pool** :
Shared swimming pool, rectangular



living room

Surroundings & location



Ocean



Golf



Horse riding

Leisure

- **Leisure activities less than 12 miles :**

Bathing, golf, tennis, riding school, pathway/broadwalk, hiking, ten-pin bowling

- **Attractions and relaxation :**

Bar/pub, discotheque, restaurant, open air summer movie theater, park and garden, leisure park, sea world, local craftstore, casino, health spa

Surroundings

- **Locality :**

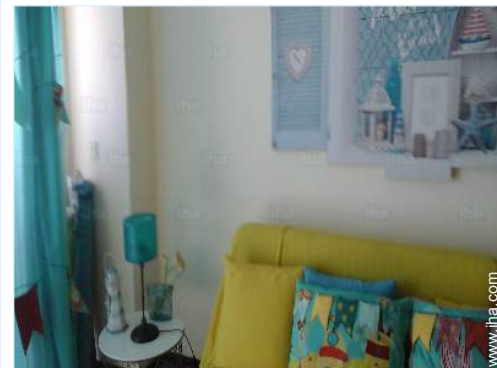
Sea/ocean <165'
Sandy beach <165'

- **Amenities :**

Downtown <165'
Bus stop / bus station <165'
Breadstore <165'
Caterer <165'
Local stores <165'
Supermarket <165'
Hairdressing salon <165'
Mail office 165'
Bank <165'
ATM <165'
Drugstore
Hospital



master bedroom



sleeper sofa(s) 2 pers



the decor

Interior

- **Receive up to :**
from 4 to 5 person(s)
- **Liveable floor area :**
700 Sq.ft.
- **Interior layout :**
4 Room(s), 1 bedroom(s), 1 bathroom, living room, separate kitchen, veranda
- **Sleeps - bed(s) :**
1 full bed(s), 1 sleeper sofa(s) 2 pers, 1 sleeper sofa(s) 1 pers
- **Guest facilities :**
Elevator, T.V., t.v points, cable/satelite, wardrobe
- **Appliances :**
Crockery/flatware, kitchen utensils, cafetiere, toaster, juicer, gaz stove, oven, micro-wave oven, extractor hood, refridgerator, dish washer, washing machine, iron, ironing board



sleeper sofa(s) 2 pers

Exterior

- **Outside accommodation :**
Terrace
- **Outside setting :**
Private courtyard 323 Sq.ft.



bathroom

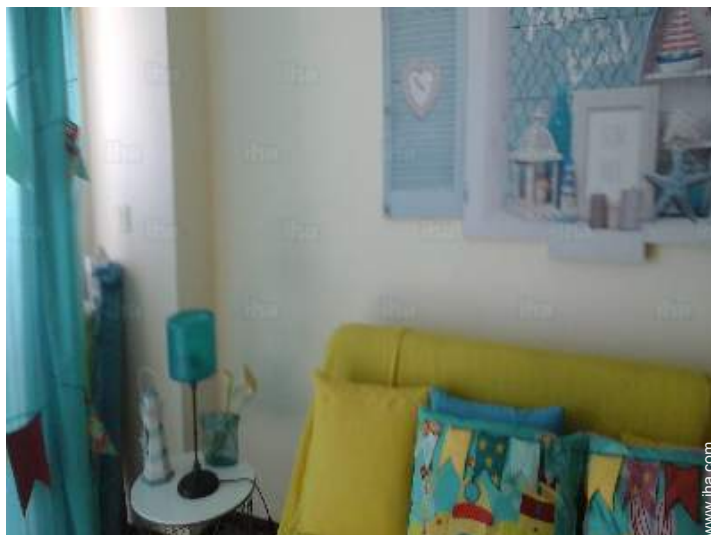
Services

- **washing :**
Comforter(s), Comforter(s), Pillows
- **Single family home :**
Cleaning on departure

Photo album - 1



living room



sleepers sofa(s) 2 pers

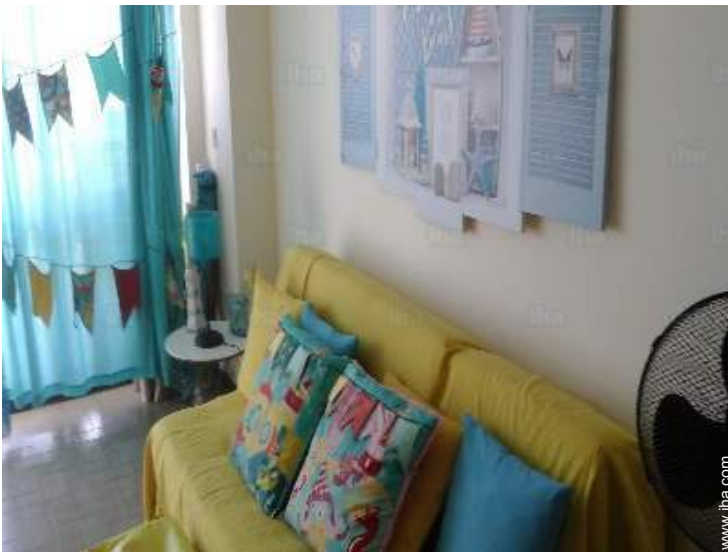
Photo album - 2



master bedroom



the decor



sleepers sofa(s) 2 pers



bathroom

[Favourite photo gallery - 1](#)



Oct 2018



Oct 2018



Oct 2018



Oct 2018



Oct 2018



Oct 2018

[Favourite photo gallery - 2](#)



Oct 2018



Oct 2018



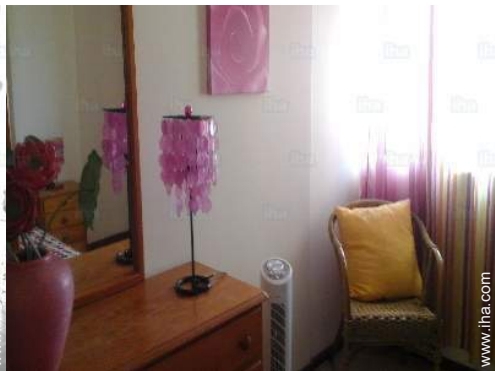
Oct 2018



Oct 2018



Oct 2018



Oct 2018



Oct 2018



Oct 2018



Oct 2018



Oct 2018

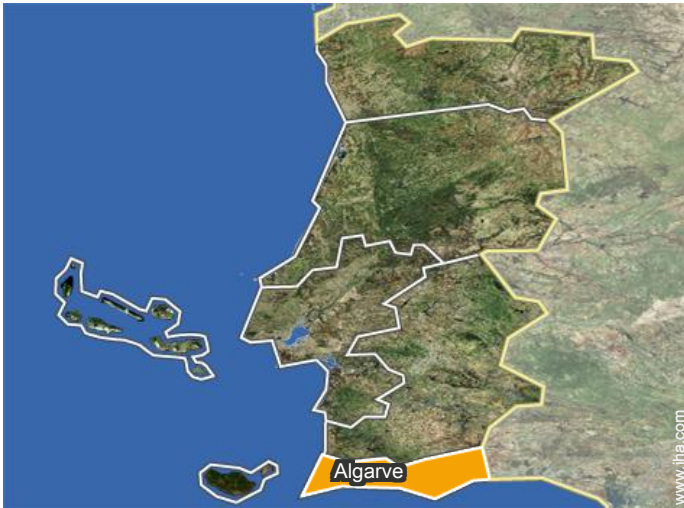


Oct 2018



Oct 2018

Location



Location & Access



GPS coordinates in degrees, minutes, seconds: Latitude 37°4'18"N - Longitude 8°6'7"W ([Dwelling](#))

Address

→ av. Francisco Sa Carneiro
edf.Cambra-Mar, torre A, 7° BIQuarteira
8125 Quarteira

● [Railroad station Loulé Praia de Quarteira](#)

→ Loulé, Algarve, Portugal
→ Distance : 7mi.
→ Time : 15'

- Loulé : (7mi.)
- Albufeira : (8mi.)
- Almancil : (3mi.)

Contact

Spoken languages



Vacation rental Quarteira - Portugal "Edf. Cambra-Mar"

[Book now](#)

Availability calendar - from : january 2019

Jan	Tu	W	Th	F	Sa	Su	M	Tu	W	Th	F	Sa	Su	M	Tu	W	Th	F	Sa	Su	M	Tu	W	Th							
2019	1	2	3	4	5	6	7	8	9	10	11	12	13	14	15	16	17	18	19	20	21	22	23	24	25	26	27	28	29	30	31

Feb	F	Sa	Su	M	Tu	W	Th	F	Sa	Su	M	Tu	W	Th	F	Sa	Su	M	Tu	W	Th								
2019	1	2	3	4	5	6	7	8	9	10	11	12	13	14	15	16	17	18	19	20	21	22	23	24	25	26	27	28	
	-	-	-	-	-	-	-	-	-	-	-	-	-	-	-	-	-	-	-	-	-	-	-	-	-	-	-	-	-

Mar	F	Sa	Su	M	Tu	W	Th	F	Sa	Su	M	Tu	W	Th	F	Sa	Su	M	Tu	W	Th	F	Sa	Su							
2019	1	2	3	4	5	6	7	8	9	10	11	12	13	14	15	16	17	18	19	20	21	22	23	24	25	26	27	28	29	30	31
	-	-	-	-	-	-	-	-	-	-	-	-	-	-	-	-	-	-	-	-	-	-	-	-	-	-	-	-	-	-	

Apr	M	Tu	W	Th	F	Sa	Su	M	Tu	W	Th	F	Sa	Su	M	Tu	W	Th	F	Sa	Su	M	Tu							
2019	1	2	3	4	5	6	7	8	9	10	11	12	13	14	15	16	17	18	19	20	21	22	23	24	25	26	27	28	29	30
	-	-	-	-	-	-	-	-	-	-	-	-	-	-	-	-	-	-	-	-	-	-	-	-	-	-	-	-	-	-

May	W	Th	F	Sa	Su	M	Tu	W	Th	F	Sa	Su	M	Tu	W	Th	F	Sa	Su	M	Tu	W	Th	F							
2019	1	2	3	4	5	6	7	8	9	10	11	12	13	14	15	16	17	18	19	20	21	22	23	24	25	26	27	28	29	30	31
	-	-	-	-	-	-	-	-	-	-	-	-	-	-	-	-	-	-	-	-	-	-	-	-	-	-	-	-	-	-	


June	Sa	Su	M	Tu	W	Th	F	Sa	Su	M	Tu	W	Th	F	Sa	Su	M	Tu	W	Th	F	Sa	Su							
2019	1	2	3	4	5	6	7	8	9	10	11	12	13	14	15	16	17	18	19	20	21	22	23	24	25	26	27	28	29	30
	-	-	-	-	-	-	-	-	-	-	-	-	-	-	-	-	-	-	-	-	-	-	-	-	-	-	-	-	-	-

Jul	M	Tu	W	Th	F	Sa	Su	M	Tu	W	Th	F	Sa	Su	M	Tu	W	Th	F	Sa	Su	M	Tu	W							
2019	1	2	3	4	5	6	7	8	9	10	11	12	13	14	15	16	17	18	19	20	21	22	23	24	25	26	27	28	29	30	31
	-	-	-	-	-	-	-	-	-	-	-	-	-	-	-	-	-	-	-	-	-	-	-	-	-	-	-	-	-	-	

Aug	Th	F	Sa	Su	M	Tu	W	Th	F	Sa	Su	M	Tu	W	Th	F	Sa	Su	M	Tu	W	Th	F	Sa							
2019	1	2	3	4	5	6	7	8	9	10	11	12	13	14	15	16	17	18	19	20	21	22	23	24	25	26	27	28	29	30	31
	-	-	-	-	-	-	-	-	-	-	-	-	-	-	-	-	-	-	-	-	-	-	-	-	-	-	-	-	-	-	

Sep	Su	M	Tu	W	Th	F	Sa	Su	M	Tu	W	Th	F	Sa	Su	M	Tu	W	Th	F	Sa	Su	M							
2019	1	2	3	4	5	6	7	8	9	10	11	12	13	14	15	16	17	18	19	20	21	22	23	24	25	26	27	28	29	30
	-	-	-	-	-	-	-	-	-	-	-	-	-	-	-	-	-	-	-	-	-	-	-	-	-	-	-	-	-	-

Oct	Tu	W	Th	F	Sa	Su	M	Tu	W	Th	F	Sa	Su	M	Tu	W	Th	F	Sa	Su	M	Tu	W	Th							
2019	1	2	3	4	5	6	7	8	9	10	11	12	13	14	15	16	17	18	19	20	21	22	23	24	25	26	27	28	29	30	31
	-	-	-	-	-	-	-	-	-	-	-	-	-	-	-	-	-	-	-	-	-	-	-	-	-	-	-	-	-	-	

 Reserved



Vacation rental
Quarteira - Portugal
"Edf. Cambra-Mar"

10
[Book now](#)

Availability calendar - from : october 2019


Nov	F	Sa	Su	M	Tu	W	Th	F	Sa	Su	M	Tu	W	Th	F	Sa	Su	M	Tu	W	Th	F	Sa	Su						
2019	1	2	3	4	5	6	7	8	9	10	11	12	13	14	15	16	17	18	19	20	21	22	23	24	25	26	27	28	29	30
	-	-	-	-	-	-	-	-	-	-	-	-	-	-	-	-	-	-	-	-	-	-	-	-	-	-	-	-	-	-

Dec	Su	M	Tu	W	Th	F	Sa	Su	M	Tu	W	Th	F	Sa	Su	M	Tu	W	Th	F	Sa	Su	M	Tu							
2019	1	2	3	4	5	6	7	8	9	10	11	12	13	14	15	16	17	18	19	20	21	22	23	24	25	26	27	28	29	30	31
	-	-	-	-	-	-	-	-	-	-	-	-	-	-	-	-	-	-	-	-	-	-	-	-	-	-	-	-	-	-	

Reserved

[Month : Next >>](#)

Rental rates - Apartment-Flat - from 4 to 5 Person(s)

Rates	Night	Weekend	week	2 weeks	Month
 Low season	\$41*	-	\$222*	\$351*	-
 Mid season	\$47*	-	\$467*	\$818*	-
 High season	\$82* > 7	-	\$584*	\$1110*	-

> Minimum Night

[Book now](#)

Booking conditions

• **Reservation**

→ Payment made upon reservation :
30% of rental sum
→ Payment balance :
on handing over the keys

Accepted methods of payment

• Bank transfer (wire) • Cash

[▶ Book now](#)

[▶ Contact the owner](#)

Contact directly the property owners

www.iha.com
Advert No.
20621
[>> Book now <<](#)

Contact

Spoken languages



* Converted at the rate indicated : €100 = \$116.85 = £89

Advert No. 20621

www.iha.com



[>> VACATION HOMES](#)

[DIRECT BY OWNERS](#)