

# Vacation rental Saint Leu "Leu pied dans l'eau"

Nestled in the hollow of the Bay of Saint-Leu, we welcome our guests in a comfortable and friendly setting of standing.



Meublés de Tourisme (4 stars)

Villa, detached, 1 floor, separate entrance, in(on) a(an) Charming Property

Setting : waterfront

Capacity : from 1 to 24 person(s)

Bedroom(s) : 12

Saint Leu

Reunion Island

Reservation : +262 (0) 6 92 69 58 95 (Reunion Island)

Advert No. 56539

www.iha.com



>> VACATION HOMES

DIRECT BY OWNERS

### Vacation rental



Villa, detached, 1 floor, separate entrance, in(on) a(an) Charming Property

- View : panoramic, not overlooked, sea/ocean, swimming pool, fantastic sunset
- Setting : waterfront
- Exposure : West

" Standing and creole charm villas displayed a traditional character while offering a high quality service. Their creole architecture highlights of the typical features of the Réunion habitat: siding wood, four-slope roof, veranda. Tradition meets modernity and we put at your disposal facilities and quality services: linen provided, full kitchen, wireless Internet access, private parking with video surveillance, heated pool and secure, pétanque Court, BBQ area. A bespoke service. the Veloutier, the Lataniers, the coconut and the mango tree villas are flexible and can accommodate 2 to 8 people. In order to meet your expectations, we offer you: woman cleaning, babysitter, high chairs and cots, airport transfer. Jean-Jacques you welcome upon arrival and will be at your disposal to organise your stay. "

### Assets

#### • Swimming pool :

Shared swimming pool, unusual (length 40', width 20'), heated, illuminated, steps in, outside shower (open from 'january 01' till 'december 31')

#### • Parking :

Parking uncovered : 8 reserved stall.

#### • Advantages :

Pétanque field

#### • baby equipment :

High chair

#### Benefits :

Direct access to the beach

### Surroundings & location



Ocean



Fishing



Festival



Culture

" Located on the West coast of the island, at the entrance to the small seaside town of Saint Leu, the catering is uniquely positioned. You will find many tourist activities nearby: Kelonia (Observatory of sea turtles), the Stella Matutina Museum, the Conservatory Mascarin National Botanical, the salt Museum. You can discover the volcanic coastline and the famous blower, indulge in many sports activities: paragliding, mountain biking, climbing, diving, fishing at the wholesale or just enjoy the beach. Surfing fans will enjoy the famous Saint Leu left, spot international reputation. The cultural activity of Saint Leu will seduce you by its diversity and richness: cultural circuits, tours, popular heritage, entertainment, festival... 5 minutes from the road to the Tamarins, Leu Pied Dans l'Eau is also an excellent starting point for your excursions in the island. "

#### Leisure

##### • Leisure activities less than 12 miles :

Bathing, snorkelling, scuba diving, surfing, tennis, hiking, mountain bike (path), paragliding, skate board (ramps), volleyball, fishing, deep-sea fishing, fishing, spear fishing, pétanque field

##### • Supervised :

Sailing school, dive school, tennis school

##### • Attractions and relaxation :

Bar/pub, restaurant, sea world, historical site, museum, festivals

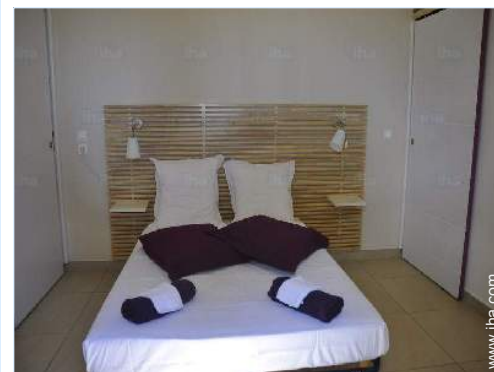
#### Surroundings

##### • Locality :

Heated swimming pool  
 Sea/ocean <165'  
 Sandy beach 0.62mi.  
 Shingle beach <165'  
 Surfing spots 330'  
 Marina 0.62mi.

##### • Amenities :

Downtown 0.5mi.  
 Bus stop / bus station 660'  
 Bike/mountain bike hire 0.93mi.  
 Car rental 0.62mi.  
 Boat rental 990'  
 Scuba diving material hire 0.5mi.  
 Breadstore 0.5mi.  
 Local stores 0.5mi.  
 Supermarket 0.93mi.  
 Hairdressing salon 0.5mi.  
 Mail office 0.62mi.  
 Bank 0.62mi.  
 ATM 0.62mi.  
 Drugstore 0.62mi.  
 Doctor 0.62mi.  
 Nurse 0.62mi.



bedroom



pool view



view over the sea

### Exterior

- **Ground surface :**  
0.5 acre
- **Outside accommodation :**  
Terrace 100 Sq.ft., covered terrace 100 Sq.ft.
- **Outside setting :**  
Enclosed grounds, tropical garden > 0.25 acre, lawn
- **Outside amenities :**  
BBQ, yard table(s), 8 yard seat(s), 12 sun recliner(s)



surfing spots

### Interior

- **Receive up to :**  
from 1 to 24 person(s)
- **Liveable floor area :**  
3,300 Sq.ft.
- **Interior layout :**  
12 bedroom(s)
- **Sleeps - bed(s) :**  
12 full bed(s), 4 sleeper sofa(s) 2 pers, 2 baby cradle
- **Guest facilities :**  
T.V., hi-fi system, wifi, radio alarmclock, hair dryer, fully air-conditioned
- **Appliances :**  
Crockery/flatware, kitchen utensils, cafetiere, electric coffee maker, electric kettle, toaster, electric hobs, oven, micro-wave oven, extractor hood, refridgerator, dish washer

### Services

- **washing :**  
Sheets (1 X / per week), Towels (1 X / per week), Beach towels (1 X / per week), Comforter(s) (1 X / per week), Pillows (1 X / per week)
- **Single family home :**  
Cleaning supplement (+\$74\*), Yard/swimming pool maintenance, Parking, Airport transfers supplement

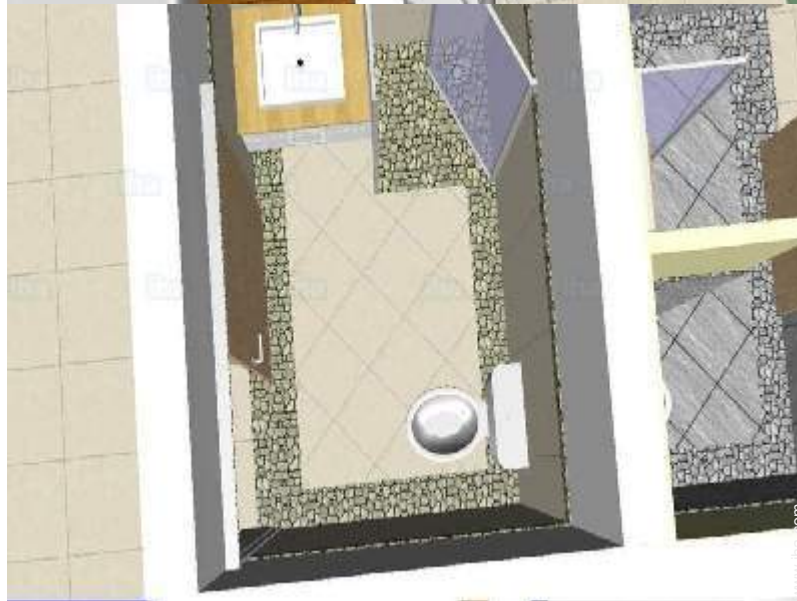
### For your guidance

- **For your guidance**  
No pet allowed  
Cell phone network coverage  
Water : hot/cold  
Local voltage supply : 220-240V / 50Hz  
Electricity supply : mains
- **Handicapped people welcome**  
Wheelchair access





Floor plan



Advert No. 56539

[www.iha.com](http://www.iha.com)



Photo album - 1



pool view



bedroom



Photo album - 2



view over the sea

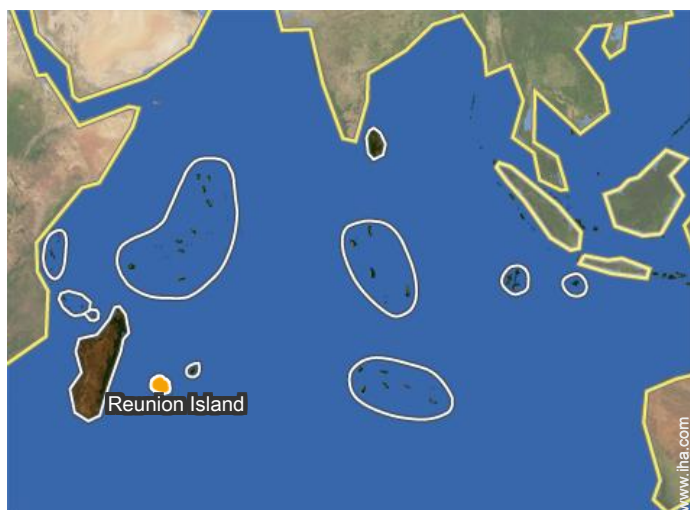


surfing spots




Outside setting

## Location



## Location & Access

" Arriving from the North, Kelonia, the Observatory of sea turtles, and continue for 1.5 km. At the entrance of Saint-Leu, before the bridge, Leu Pied Dans l'Eau is on the right, sea side. Arriving from the South, through the town of Saint-Leu, the bridge, Leu Pied Dans l'Eau is located on the left side sea. "

 GPS coordinates in degrees, minutes, seconds: Latitude 21° 9'38"S - Longitude 55°17'13"E ([Dwelling](#))

### Address

→ 22 rue du Général Lambert  
97436 Saint Leu

### • Airport Roland Garros

→ Saint Denis (Reunion), Reunion Island  
→ Distance : 37,3mi.

### • Bus station St. Leu

→ Saint Leu, Reunion Island  
→ Distance : 0.3mi.  
→ Time : 5'

- Saint Leu : (0.5mi.)
- Saint Gilles les Bains : (9mi.)
- Saint Denis (Reunion) : (31mi.)

## Contact

Spoken languages



Vacation rental  
 Saint Leu - Reunion Island  
**"Leu pied dans l'eau"**

8  
[Book now](#)

Rental rates - Villa - from 1 to 24 Person(s)

Rates	Night	Weekend	week	2 weeks	Month
<span style="color: green;">■</span> Low season	-	\$105* (Friday)	\$302*	-	-
<span style="color: orange;">■</span> High season	-	\$105* (Friday)	\$302*	-	-

(Check-in day)

[Book now](#)



pool view

bedroom

Booking conditions

• **Reservation**

- Payment made upon reservation : 30% of rental sum
- Payment balance : on handing over the keys
- Deposit required : \$617\*

• **rentals**

- Day tax included
- Cleaning charge levy on departure : \$74\*
- Anticipated supplement for :  
- supplementary bed(s)

[▶ Book now](#)

[▶ Contact the owner](#)

Accepted methods of payment

- Bank transfer (wire)
- Check
- Draft
- Cash

Contact directly the property owners

[www.ihaholidayads.com](http://www.ihaholidayads.com)  
**Advert No.**  
**56539**  
**>> Book now <<**

Contact

Spoken languages



\* Converted at the rate indicated : €100 = \$123.46 = £88.94

Advert No. 56539

[www.ihaholidayads.com](http://www.ihaholidayads.com)

