

# Vacation rental Sainte-Anne (Reunion) "La Case Bassin Bleu"

The authenticity of the meeting! Recommended by Petit Futé 2016!  
Discover island through this charming creole House with holiday fragrance!



**Creole House**, detached, single storey,  
separate entrance, in(on) a(an) Private  
property

Setting : peaceful, exotic

Capacity : from 1 to 6 person(s)

Bedroom(s) : 3

Room(s) : 5

Sainte-Anne (Reunion)

Reunion Island

Reservation : +262 (0) 2 62 50 29 15 (Reunion Island)

Advert No. 76220

www.ihaholiday.com



## Vacation rental



Creole House, detached, single storey, separate entrance, in(on) a(an) Private property

- **Ideal for family, all age groups**
- **View** : not overlooked, mountain, garden/park, river, village, monument
- **Setting** : peaceful, exotic

" The traditional House, restored and tastefully decorated, its exotic garden invite you to the scenery. Equipped for 6 persons, the box has 3 double bedrooms, a living room with flat screen TV and DVD player, a fully equipped kitchen, a bathroom with Italian shower, a large veranda with barbecue and a fenced garden. Secure parking. Free wifi access. Washing machine. Linens provided. We also offer a bed and breakfast for 2-3 persons. "

## Assets

- **Parking** :  
Parking uncovered : off road.



Outside setting

## Surroundings & location



Ocean



Fishing



Culture

" Near attractions: Bassin Bleu, Church of Sainte - Anne, Anse des Cascades, route lavas, peace, Grand Etang, Takamaka basin, the cooperative of vanilla, Salazie, plain of Palm... Near hospital is meeting, regional Conservatory, Lycée Marie Curie, Irts. Close to all convenience: bakery, supermarket and restaurant. "

### Leisure

- **Leisure activities less than 12 miles** :

Bathing, canoeing, canyoning, rafting, tennis, riding school, pony club, pathway/ broadwalk, coastal/forest paths, hiking, horse trekking, go-karting, race track, paintball, fishing, fishing

- **Attractions and relaxation** :

Restaurant, karaoke, park and garden, museum, theater, local craftstore, health spa, beauticians, fitness center

### Surroundings

- **Locality** :

Sea/ocean 990'  
Public swimming pool 3mi.  
Public tennis court 0.62mi.  
River rapids 3mi.  
Waterfall 6mi.  
River 0.5mi.  
Stretch of water 0.5mi.  
Forest 1.85mi.  
Mountain range 12.5mi.

- **Amenities** :

Village center 990'  
Downtown 3mi.  
Bus stop / bus station 990'  
Bus pick up point beach 3mi.  
Car rental 990'  
Breadstore 990'  
Caterer 990'  
Local stores 990'  
Supermarket 3mi.  
Hairdressing salon  
Mail office 0.3mi.  
ATM 0.3mi.  
Drugstore 990'  
Doctor 990'  
Nurse 990'  
Hospital 3mi.



veranda







BBQ

### Exterior

- **Ground surface :**  
4,300 Sq.ft.
- **Outside accommodation :**  
Covered terrace
- **Outside setting :**  
Enclosed grounds 4,300 Sq.ft., tropical garden, lawn
- **Outside amenities :**  
BBQ, yard table(s), 8 yard seat(s), yard seated area



tv den

### Interior

- **Receive up to :**  
from 1 to 6 person(s)
- **Liveable floor area :**  
1,076 Sq.ft.
- **Interior layout :**  
5 Room(s), 3 bedroom(s), 1 shower room, 1 toilets, sitting room 150 Sq.ft., separate kitchen, tv den, laundry room, veranda
- **Sleeps - bed(s) :**  
2 full bed(s), 2 two twin beds, 1 baby cradle, 1 camp bed(s)
- **Guest facilities :**  
T.V., DVD player, wifi, cupboard, mobile cool air fan, Drapes
- **Appliances :**  
Crockery/flatware, kitchen utensils, cafetiere, electric kettle, toaster, gaz stove, oven, micro-wave oven, reffridgerator, deep freeze, washing machine, iron, ironing board

### Services

- **washing :**  
Sheets, Towels supplement (+\$6\*), Linen, Comforter(s), Pillows
- **Single family home :**  
Cleaning supplement (1 X / per week +\$23\*), Cleaning on departure supplement (+\$47\*)
- **Restauration :**  
Breakfast supplement (+\$9\*)

### For your guidance

- **For your guidance**  
Kids welcome  
Cell phone network coverage  
Water : hot/cold



kitchen



Photo album - 1



Outside setting



veranda



BBQ



kitchen



Photo album - 2



tv den



shower room



shower room



bedroom



bedroom



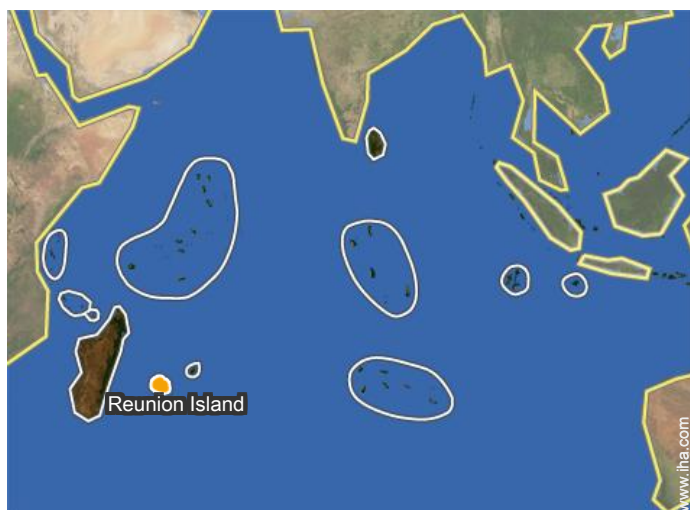
bedroom

Vacation rental  
Sainte-Anne (Reunion) - Reunion Island  
"La Case Bassin Bleu"

6


[Book now](#)

Location



Location & Access

" Directions: From Roland Garros airport, take the direction of the East, and Sainte-Anne, continue straight until the entrance to the city, take the second right after the gendarmerie. Continue straight on for about 200 m. "

 GPS coordinates in degrees, minutes, seconds: Latitude 21° 4'44"S - Longitude 55°44'31"E ([Dwelling](#))

Address

→ 6 chemin Moreau  
97470 Sainte-Anne (Reunion)

• [Airport Roland Garros](#)

→ Saint Denis (Reunion), Reunion Island  
→ Distance : 25mi.

- Saint Benoît : (3mi.)
- Saint André : (9mi.)
- Sainte Rose (Reunion) : (9mi.)

Contact

Spoken languages



# Vacation rental Sainte-Anne (Reunion) - Reunion Island "La Case Bassin Bleu"

7  
[Book now](#)

Availability calendar - from : november 2017

Nov	W	Th	F	Sa	Su	M	Tu	W	Th	F	Sa	Su	M	Tu	W	Th	F	Sa	Su	M	Tu	W	Th							
2017	1	2	3	4	5	6	7	8	9	10	11	12	13	14	15	16	17	18	19	20	21	22	23	24	25	26	27	28	29	30
																					-	-	-	-	-	-	-	-	-	-

Dec	F	Sa	Su	M	Tu	W	Th	F	Sa	Su	M	Tu	W	Th	F	Sa	Su	M	Tu	W	Th	F	Sa	Su							
2017	1	2	3	4	5	6	7	8	9	10	11	12	13	14	15	16	17	18	19	20	21	22	23	24	25	26	27	28	29	30	31
	-	-	-	-	-	-	-	-	-	-	-	-	-	-	-	-	-	-	-	-	-	-	-	-	-	-	-	-	-	-	

Jan	M	Tu	W	Th	F	Sa	Su	M	Tu	W	Th	F	Sa	Su	M	Tu	W	Th	F	Sa	Su	M	Tu	W							
2018	1	2	3	4	5	6	7	8	9	10	11	12	13	14	15	16	17	18	19	20	21	22	23	24	25	26	27	28	29	30	31
	-	-	-	-	-	-	-	-	-	-	-	-	-	-	-	-	-	-	-	-	-	-	-	-	-	-	-	-	-	-	

Feb	Th	F	Sa	Su	M	Tu	W	Th	F	Sa	Su	M	Tu	W	Th	F	Sa	Su	M	Tu	W								
2018	1	2	3	4	5	6	7	8	9	10	11	12	13	14	15	16	17	18	19	20	21	22	23	24	25	26	27	28	
	-	-	-	-	-	-	-	-	-	-	-	-	-	-	-	-	-	-	-	-	-	-	-	-	-	-	-	-	-

Mar	Th	F	Sa	Su	M	Tu	W	Th	F	Sa	Su	M	Tu	W	Th	F	Sa	Su	M	Tu	W	Th	F	Sa							
2018	1	2	3	4	5	6	7	8	9	10	11	12	13	14	15	16	17	18	19	20	21	22	23	24	25	26	27	28	29	30	31
	-	-	-	-	-	-	-	-	-	-	-	-	-	-	-	-	-	-	-	-	-	-	-	-	-	-	-	-	-	-	

Apr	Su	M	Tu	W	Th	F	Sa	Su	M	Tu	W	Th	F	Sa	Su	M	Tu	W	Th	F	Sa	Su	M							
2018	1	2	3	4	5	6	7	8	9	10	11	12	13	14	15	16	17	18	19	20	21	22	23	24	25	26	27	28	29	30
	-	-	-	-	-	-	-	-	-	-	-	-	-	-	-	-	-	-	-	-	-	-	-	-	-	-	-	-	-	-

May	Tu	W	Th	F	Sa	Su	M	Tu	W	Th	F	Sa	Su	M	Tu	W	Th	F	Sa	Su	M	Tu	W	Th							
2018	1	2	3	4	5	6	7	8	9	10	11	12	13	14	15	16	17	18	19	20	21	22	23	24	25	26	27	28	29	30	31
	-	-	-	-	-	-	-	-	-	-	-	-	-	-	-	-	-	-	-	-	-	-	-	-	-	-	-	-	-	-	

June	F	Sa	Su	M	Tu	W	Th	F	Sa	Su	M	Tu	W	Th	F	Sa	Su	M	Tu	W	Th	F	Sa							
2018	1	2	3	4	5	6	7	8	9	10	11	12	13	14	15	16	17	18	19	20	21	22	23	24	25	26	27	28	29	30
	-	-	-	-	-	-	-	-	-	-	-	-	-	-	-	-	-	-	-	-	-	-	-	-	-	-	-	-	-	-

Jul	Su	M	Tu	W	Th	F	Sa	Su	M	Tu	W	Th	F	Sa	Su	M	Tu	W	Th	F	Sa	Su	M	Tu							
2018	1	2	3	4	5	6	7	8	9	10	11	12	13	14	15	16	17	18	19	20	21	22	23	24	25	26	27	28	29	30	31
	-	-	-	-	-	-	-	-	-	-	-	-	-	-	-	-	-	-	-	-	-	-	-	-	-	-	-	-	-	-	

Aug	W	Th	F	Sa	Su	M	Tu	W	Th	F	Sa	Su	M	Tu	W	Th	F	Sa	Su	M	Tu	W	Th	F							
2018	1	2	3	4	5	6	7	8	9	10	11	12	13	14	15	16	17	18	19	20	21	22	23	24	25	26	27	28	29	30	31
	-	-	-	-	-	-	-	-	-	-	-	-	-	-	-	-	-	-	-	-	-	-	-	-	-	-	-	-	-	-	

 Reserved

Vacation rental  
 Sainte-Anne (Reunion) - Reunion Island  
**"La Case Bassin Bleu"**

8  
[Book now](#)

Availability calendar - from : august 2018

Sep	Sa	Su	M	Tu	W	Th	F	Sa	Su	M	Tu	W	Th	F	Sa	Su	M	Tu	W	Th	F	Sa	Su	M	Tu	W	Th	F	Sa	Su
2018	1	2	3	4	5	6	7	8	9	10	11	12	13	14	15	16	17	18	19	20	21	22	23	24	25	26	27	28	29	30
-	-	-	-	-	-	-	-	-	-	-	-	-	-	-	-	-	-	-	-	-	-	-	-	-	-	-	-	-	-	-




  

Oct	M	Tu	W	Th	F	Sa	Su	M	Tu	W	Th	F	Sa	Su	M	Tu	W	Th	F	Sa	Su	M	Tu	W	Th	F	Sa	Su	M	Tu	W
2018	1	2	3	4	5	6	7	8	9	10	11	12	13	14	15	16	17	18	19	20	21	22	23	24	25	26	27	28	29	30	31
-	-	-	-	-	-	-	-	-	-	-	-	-	-	-	-	-	-	-	-	-	-	-	-	-	-	-	-	-	-	-	-

Reserved

[Month : Next >>](#)

Rental rates - Creole House - from 1 to 6 Person(s)

Rates	Night	Weekend	week	2 weeks	Month
 Low season	-	\$176* (Friday)	\$348*	\$673*	\$1290*
 Mid season	-	-	\$411*	-	-
 High season	-	\$293* (Friday)	\$528*	-	-

(Check-in day)

[Book now](#)

Booking conditions

• **Reservation**

- Payment made upon reservation : 30% of rental sum
- Payment balance : on handing over the keys
- Deposit required : \$293\*

• **rentals**

- Service charges included
- Day tax included
- Cleaning charge levy on departure : \$35\*
- Anticipated supplement for : - supplementary bed(s)

Accepted methods of payment

- Check • Draft • Cash

[▶ Book now](#)

[▶ Contact the owner](#)

Contact directly the property owners

[www.iha.com](http://www.iha.com)  
**Advert No.**  
**76220**  
**>> Book now <<**

Contact

Spoken languages



\* Converted at the rate indicated : €100 = \$117.29 = £89.59

Advert No. 76220

[www.iha.com](http://www.iha.com)

