

Vacation rental Sydney "Waldorf South Sydney"



Apartment-Flat first floor in(on) a(an)
Apartment hotel

Setting : city

Capacity : 3 person(s)
Bedroom(s) : 1

Sydney - New South Wales

Australia

Advert No. 16324

Reservation : +61 (2) 96909690 (Australia)

www.iha.com



Vacation rental



Apartment-Flat first floor in(on) a(an) Apartment hotel

- **Ideal for all age groups**
- **View :** swimming pool, city, rooftop, street/avenue, nightlights
- **Setting :** city

Assets

- **Swimming pool :**
 Shared swimming pool, steps in, step ladder, child secure, outside shower (open from 'january 01' till 'december 31')
- **Parking :**
 Covered parking : 1 carport.
- **Advantages :**
 Sauna, steam bath, fitness machine(s)
- **baby equipment :**
 High chair, comfort station, infant tub, baby potty, playpen



overall view

Surroundings & location



Leisure

- **Leisure activities less than 12 miles :**
 Bathing, snorkelling, scuba diving, water skiing, jet ski, surfing, golf, tennis, squash, boat trips, mini-golf, basketball, fishing, deep-sea fishing, fishing
- **Supervised :**
 Dive school, tennis school
- **Attractions and relaxation :**
 Bar/pub, discotheque, restaurant, movie theater, karaoke, park and garden, zoo/ animal park, exhibition center, art gallery, historical site, museum, theater, opera house, festivals, cellar and wine tasting, casino, sauna, fitness center

Surroundings

- **Locality :**
 Sea/ocean 3mi.
 Sandy beach 4.5mi.
 Public swimming pool 1.85mi.
 Public tennis court 0.93mi.
 18 hole golf course 1.5mi.
 Windsurfing spots 6mi.
 Surfing spots 4.5mi.
 Marina 0.62mi.
- **Amenities :**
 Downtown 0.62mi.
 Bus stop / bus station <165'
 Car rental <165'
 Scuba diving material hire 4.5mi.
 Breadstore 0.5mi.
 Local stores 0.5mi.
 Supermarket 0.3mi.
 High class retailers 0.93mi.
 Hairdressing salon 0.5mi.
 Mail office 0.62mi.
 Bank 0.62mi.
 Drugstore 0.3mi.
 Doctor 0.5mi.
 Hospital 0.62mi.
 Dispensary 0.5mi.



queen-size bed(s)



Kitchen Area



Guest facilities

Interior

- **Receive up to :**
3 person(s) (2 adults, 1 kids)
- **Liveable floor area :**
485 Sq.ft.
- **Interior layout :**
1 bedroom(s), 1 shower room, 1 toilets, living room < 100 Sq.ft, sitting room, american style kitchen, dining area, tv den, fitness room, laundry room, pantry, veranda
- **Sleeps - bed(s) :**
1 queen-size bed(s), 1 sleeper sofa(s) 1 pers, 1 baby cradle
- **Guest facilities :**
Elevator, T.V., DVD player, movie collection, t.v points, phone, fax, cable/satelite, internet access, high speed internet access, wifi, wardrobe, cupboard, Hanging wardrobe, safe deposit box, hair dryer, fly screens, fully air-conditioned, central heating, electric heating, Drapes, Blinds, entry phone system, intruder alarm, fire alarm, remote controlled gates
- **Appliances :**
Crockery/flatware, kitchen utensils, cafetiere, electric coffee maker, electric kettle, toaster, electric stove, electric hobs, oven, micro-wave oven, electric fries fryer, extractor hood, refridgerator, deep freeze, dish washer, washing machine, clothes dryer, iron, ironing board

Exterior

- **Outside accommodation :**
Terrace, balcony
- **Outside setting :**
Landscaped yard
- **Outside amenities :**
BBQ



fitness room

Services

- **washing :**
Sheets, Towels, Linen, Comforter(s) supplement (1 X / per week +\$12*), Pillows
- **Single family home :**
Cleaning (1 X / per week), Cleaning on departure, Yard/swimming pool maintenance, Caretaker/concierge, Parking
- **Personnel :**
Staff, Laundry supplement (1 X / per week + \$12*)
- **Restauration :**
Breakfast, Locally produced meals supplement (+\$19*)

For your guidance

- **For your guidance**
Kids welcome
Cell phone network coverage, personal transport advisable
Local voltage supply : 110-120V / 60Hz
Electricity supply : mains
- **Handicapped people welcome**
Wheelchair access
Fitted out for the disabled : mobility, visually impaired, hard of hearing



Outside setting

Floor plan



Photo album - 1



overall view



Kitchen Area



queen-size bed(s)



Guest facilities



Outside setting

Photo album - 2



fitness room



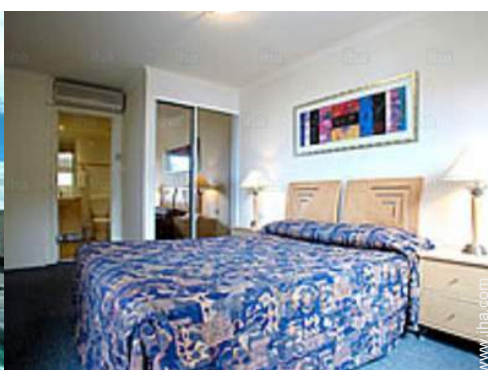
interior



breakfast



Outside amenities



bedroom



the apartment



master bedroom



shared swimming pool



living room

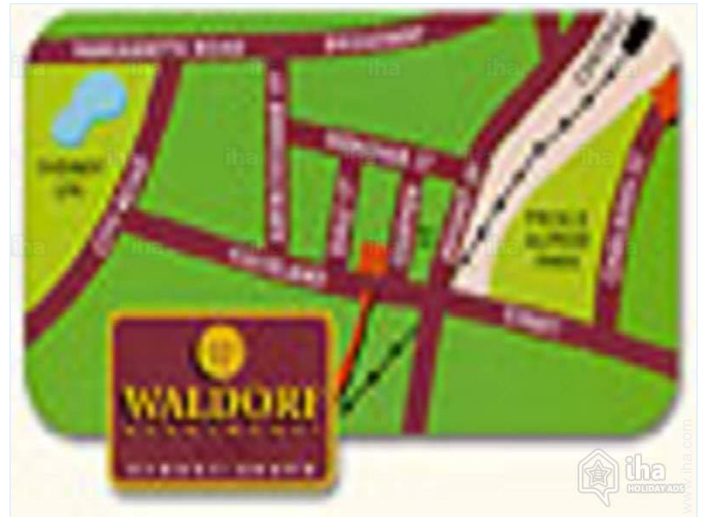


Guest facilities



elevator

Route map



Location & Access



GPS coordinates in degrees, minutes, seconds: Latitude 33° 53'19"S - Longitude 151°12'1"E (Dwelling)

Address

→ 47 Chippen Strett
1000 Sydney

• Airport Sydney Kingsford Smith

→ Sydney, New South Wales, Australia
→ Distance : 3mi.
→ Time : 20'

• Railroad station Sydney Central

→ Sydney, New South Wales, Australia
→ Distance : 0.62mi.
→ Time : 5'

• Surry Hills : (1.5mi.)

• Bondi : (4.5mi.)

Contact

Spoken languages



Vacation rental
New South Wales - Australia
"Waldorf South Sydney"

8
[Book now](#)

Location



Rental rates - Apartment-Flat - 3 Person(s)

Rates	Night	Weekend	week	2 weeks	Month
 Low season	\$110	\$140	\$770	\$1400	\$3000
 Mid season	\$130	\$150	\$840	\$1500	\$3200
 High season	\$155	\$160	\$910	\$1700	\$4000

[Book now](#)



overall view



Kitchen Area

Booking conditions

• **Reservation**

- Payment made upon reservation : 50% of rental sum
- Payment balance : 1 day before the stay

• **rentals**

- Service charges included
- Day tax included
- Cleaning charge on departure included

Accepted methods of payment

- Visa/Delta/Electron • International Money Order • Switch/Maestro • Bank transfer (wire) • MasterCard/EuroCard • Cirrus • American Express • JCB • Diners Club • PayPal • Travellers Cheques • Cash

[▶ Book now](#)

[▶ Contact the owner](#)

Contact directly the property owners

www.iha.com
Advert No. 16324
>> Book now <<

Contact

Spoken languages

