

# Vacation rental Terre de Haut "Escale-Créole"

A fun recipe: a bit of good humor, a touch of smile, a pinch of patience and tolerance, all decorated with simplicity and voila... Welcome!



**Studio Flat** first floor, separate entrance,  
in(on) a(an) House single storey

Setting : pleasant, exotic

Capacity : from 1 to 4 person(s)

Bedroom(s) : 1

Terre de Haut - Les Saintes

Guadeloupe

Reservation : +590 (0) 5 90 99 59 87 (Guadeloupe)

Advert No. 2229

www.iha.com



## Vacation rental



Studio Flat first floor, separate entrance, in (on) a(an) House single storey

- View : not overlooked, sea/ocean, fantastic sunset
- Setting : pleasant, exotic
- Exposure : South

" Studio comforts of approximately 40 m2 with kitchen (TV set, air conditioning and WIFI) for 2 to 4 persons (bed 160 and clic clac). Terrace 20 m2 sea view and the sugar loaf. Complimentary breakfast. 1/2 Board - full Board or restore on demand. Bed linen included. "

## Assets

- Advantages :  
Snorkelling equipment



view from the terrace

## Surroundings & location



Ocean



Fishing

" On the island, you can enjoy scuba diving, fishing or even sea but especially Palm mask snorkel trip. Sugar Loaf is the natural aquarium, but all the tracks are appealing to the seabed. The walks are recommended. All walks are nice because the island itself is a tourist attraction... Dare to walk. "

### Leisure

- Leisure activities less than 12 miles :

Bathing, snorkelling, scuba diving, windsurfing, canoeing, pathway/broadwalk, hiking, boat trips, fishing, deep-sea fishing, spear fishing

- Supervised :

Dive school

- Attractions and relaxation :

Bar/pub, restaurant, historical site, local craftstore

### Surroundings

- Locality :

Sea/ocean  
Sandy beach 660'

- Amenities :

Village center 0.93mi.  
Bike/mountain bike hire  
Scooter/motorbike hire  
Scuba diving material hire  
Breadstore  
Local stores  
Internet cafe  
Mail office  
ATM  
Drugstore  
Doctor  
Nurse



Studio Flat



bedroom



kitchen

### Interior

- **Receive up to :**

from 1 to 4 person(s)

- **Liveable floor area :**

650 Sq.ft.

- **Interior layout :**

1 bedroom(s), 1 shower room, 1 toilets, Kitchen Area, veranda

- **Sleeps - bed(s) :**

1 full bed(s), 1 sleeper sofa(s) 2 pers, 1 baby cradle, 1 camp bed(s), 1 possible extra bed (s)

- **Guest facilities :**

T.V., board games, internet access, wifi, cupboard, hair dryer, mosquito nets, fully air-conditioned, mobile cool air fan

- **Appliances :**

Crockery/flatware, kitchen utensils, cafetiere, electric kettle, electric hobs, mini-oven, micro-wave oven, refridgerator, deep freeze, washing machine, vacuum cleaner, iron, ironing board



kitchen

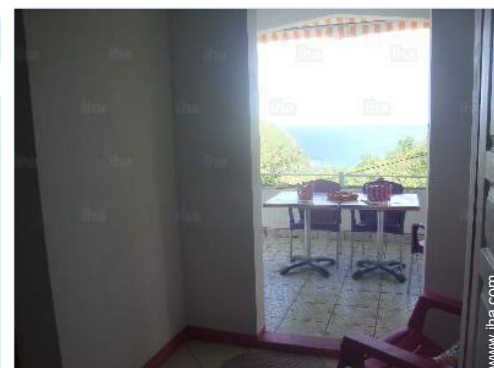
### Exterior

- **Outside accommodation :**

Terrace 215 Sq.ft.

- **Outside amenities :**

Yard table(s), 6 yard seat(s), 2 sun recliner (s), 1 hammock(s)



view from the apartment

### Services

- **washing :**

Sheets, Towels, Linen, Pillows

- **Single family home :**

Cleaning supplement, Cleaning on departure

- **Personnel :**

Baby sitting supplement

- **Restauration :**

Breakfast supplement (+\$7\*), Half board supplement, Full board supplement, Locally produced meals supplement, Picnic basket supplement

### For your guidance

- **For your guidance**

Kids welcome

Pets friendly

Water : hot/cold

Local voltage supply : 220-240V / 50Hz

Electricity supply : mains



Photo album - 1



view from the terrace



bedroom



Studio Flat



kitchen



kitchen



Photo album - 2



view from the apartment



view from the covered terrace



view from the terrace



Kitchen Area



covered terrace



view from the kitchen



covered terrace



bedroom

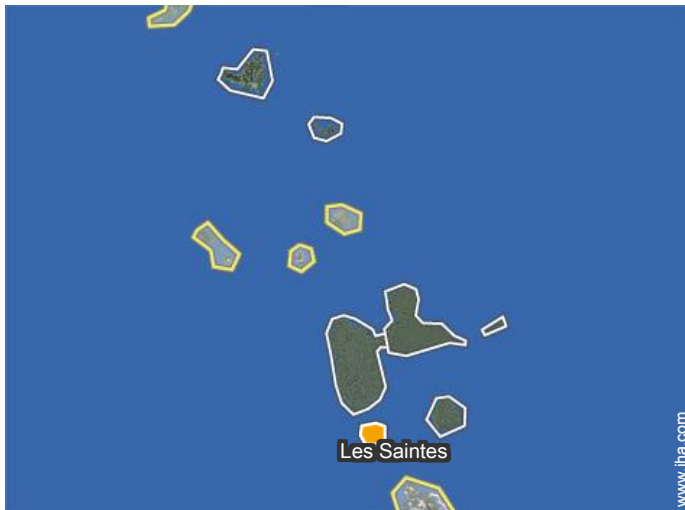


restaurant



View

### Location



### Location & Access

"Our accommodation is located in the South of the island, it is best to get there by taxi, electric car or scooter, but the island is passable on foot (for the most courageous). We send you all the details at your accommodation request."



GPS coordinates in degrees, minutes, seconds: Latitude 15°51'41"N - Longitude 61°35'38"W (Dwelling)

#### Address

→ 419 route de bois joli  
Le Pain de Sucre  
97137 Terre de Haut

→ Pointe à Pitre, Grande Terre,  
Guadeloupe  
→ Time : 1h

#### • Sea port Trois Rivières

→ Trois Rivières (Basse Terre), Basse  
Terre Island, Guadeloupe  
→ Distance : 7,5mi.  
→ Time : 15'

- Terre de Bas : (1.5mi.)
- Trois Rivières (Basse Terre) : (7,5mi.)

#### • Airport Guadeloupe Pôle Caraïbes

→ Pointe à Pitre, Grande Terre,  
Guadeloupe  
→ Time : 20'

#### • Sea port Pointe à Pitre

### Contact

Spoken  
languages



# Vacation rental Les Saintes - Terre de Haut "Escale-Créole"

7  
[Book now](#)

Availability calendar - from : june 2019

June	Sa	Su	M	Tu	W	Th	F	Sa	Su	M	Tu	W	Th	F	Sa	Su	M	Tu	W	Th	F	Sa	Su	
2019	1	2	3	4	5	6	7	8	9	10	11	12	13	14	15	16	17	18	19	20	21	22	23	24
																							-	-

Jul	M	Tu	W	Th	F	Sa	Su	M	Tu	W	Th	F	Sa	Su	M	Tu	W	Th	F	Sa	Su	M	Tu	W
2019	1	2	3	4	5	6	7	8	9	10	11	12	13	14	15	16	17	18	19	20	21	22	23	24
	-	-	-	-	-	-	-	-	-	-	-	-	-	-	-	-	-	-	-	-	-	-	-	-

Aug	Th	F	Sa	Su	M	Tu	W	Th	F	Sa	Su	M	Tu	W	Th	F	Sa	Su	M	Tu	W	Th	F	Sa
2019	1	2	3	4	5	6	7	8	9	10	11	12	13	14	15	16	17	18	19	20	21	22	23	24
	-	-	-	-	-	-	-	-	-	-	-	-	-	-	-	-	-	-	-	-	-	-	-	-

Sep	Su	M	Tu	W	Th	F	Sa	Su	M	Tu	W	Th	F	Sa	Su	M	Tu	W	Th	F	Sa	Su	M	
2019	1	2	3	4	5	6	7	8	9	10	11	12	13	14	15	16	17	18	19	20	21	22	23	24
	-	-	-	-	-	-	-	-	-	-	-	-	-	-	-	-	-	-	-	-	-	-	-	-

Oct	Tu	W	Th	F	Sa	Su	M	Tu	W	Th	F	Sa	Su	M	Tu	W	Th	F	Sa	Su	M	Tu	W	Th
2019	1	2	3	4	5	6	7	8	9	10	11	12	13	14	15	16	17	18	19	20	21	22	23	24
	-	-	-	-	-	-	-	-	-	-	-	-	-	-	-	-	-	-	-	-	-	-	-	-

Nov	F	Sa	Su	M	Tu	W	Th	F	Sa	Su	M	Tu	W	Th	F	Sa	Su	M	Tu	W	Th	F	Sa	
2019	1	2	3	4	5	6	7	8	9	10	11	12	13	14	15	16	17	18	19	20	21	22	23	24
	-	-	-	-	-	-	-	-	-	-	-	-	-	-	-	-	-	-	-	-	-	-	-	-

Dec	Su	M	Tu	W	Th	F	Sa	Su	M	Tu	W	Th	F	Sa	Su	M	Tu	W	Th	F	Sa	Su	M	Tu
2019	1	2	3	4	5	6	7	8	9	10	11	12	13	14	15	16	17	18	19	20	21	22	23	24
	-	-	-	-	-	-	-	-	-	-	-	-	-	-	-	-	-	-	-	-	-	-	-	-

Jan	W	Th	F	Sa	Su	M	Tu	W	Th	F	Sa	Su	M	Tu	W	Th	F	Sa	Su	M	Tu	W	Th	F
2020	1	2	3	4	5	6	7	8	9	10	11	12	13	14	15	16	17	18	19	20	21	22	23	24
	-	-	-	-	-	-	-	-	-	-	-	-	-	-	-	-	-	-	-	-	-	-	-	-

Feb	Sa	Su	M	Tu	W	Th	F	Sa	Su	M	Tu	W	Th	F	Sa	Su	M	Tu	W	Th	F	Sa		
2020	1	2	3	4	5	6	7	8	9	10	11	12	13	14	15	16	17	18	19	20	21	22	23	24
	-	-	-	-	-	-	-	-	-	-	-	-	-	-	-	-	-	-	-	-	-	-	-	-

Mar	Su	M	Tu	W	Th	F	Sa	Su	M	Tu	W	Th	F	Sa	Su	M	Tu	W	Th	F	Sa	Su	M	Tu
2020	1	2	3	4	5	6	7	8	9	10	11	12	13	14	15	16	17	18	19	20	21	22	23	24
	-	-	-	-	-	-	-	-	-	-	-	-	-	-	-	-	-	-	-	-	-	-	-	-

Vacation rental  
Les Saintes - Guadeloupe  
"Escale-Créole"

8  
[Book now](#)



Availability calendar - from : march 2020

Apr	W	Th	F	Sa	Su	M	Tu	W	Th	F	Sa	Su	M	Tu	W	Th	F	Sa	Su	M	Tu	W	Th							
2020	1	2	3	4	5	6	7	8	9	10	11	12	13	14	15	16	17	18	19	20	21	22	23	24	25	26	27	28	29	30
	-	-	-	-	-	-	-	-	-	-	-	-	-	-	-	-	-	-	-	-	-	-	-	-	-	-	-	-	-	

May	F	Sa	Su	M	Tu	W	Th	F	Sa	Su	M	Tu	W	Th	F	Sa	Su	M	Tu	W	Th	F	Sa	Su							
2020	1	2	3	4	5	6	7	8	9	10	11	12	13	14	15	16	17	18	19	20	21	22	23	24	25	26	27	28	29	30	31
	-	-	-	-	-	-	-	-	-	-	-	-	-	-	-	-	-	-	-	-	-	-	-	-	-	-	-	-	-	-	

[Month : Next >>](#)

Rental rates - Studio Flat - from 1 to 4 Person(s)

Rates	Night	Weekend	week	2 weeks	Month
 Low season	\$76* ↓	-	\$491*	\$964*	\$1285*
 Mid season	\$76* ↓	-	\$491*	\$964*	\$1285*
 High season	\$76* ↓	-	\$491*	\$964*	\$1285*
 Promotional period	-	-	\$456*	-	-

↓ Reducing rates

[Book now](#)

Booking conditions

• **Reservation**

→ Payment made upon reservation :  
50% of rental sum  
→ Payment balance :  
on handing over the keys

• **rentals**

→ Day tax in addition  
→ Cleaning charge on departure included  
→ Anticipated supplement for :  
- animals  
- supplementary bed(s)

[▶ Book now](#)

[▶ Contact the owner](#)

Accepted methods of payment

• Visa/Delta/Electron • Bank transfer  
(wire) • MasterCard/EuroCard • PayPal •  
Cash

Contact directly the property owners

[www.iha.com](http://www.iha.com)  
**Advert No.**  
**2229**  
**>> Book now <<**

Contact

Spoken  
languages



\* Converted at the rate indicated : €100 = \$116.85 = £89

Advert No. 2229

[www.iha.com](http://www.iha.com)



>> VACATION HOMES

DIRECT BY OWNERS