

# Vacation rental Vila Nova de Cacela "Villa FRANCIA B"

Villa standing with swimming pool. Typical and authentic village square



**Villa**, attached home, 2 floors, separate entrance, in(on) a(an) Private property

Setting : pleasant, characteristic

Capacity : from 1 to 6 person(s)

Bedroom(s) : 3

Room(s) : 5



Qualité tourisme ( )

Vila Nova de Cacela - Algarve

Portugal

Reservation : +33 (0) 553423570 (France)

Advert No. 55587

www.ihaholiday.com



### Vacation rental



Villa, attached home, 2 floors, separate entrance, in(on) a(an) Private property

- **Ideal for all age groups, large families**
- **View :** panoramic, unobscured, not overlooked, country side, swimming pool, village
- **Setting :** pleasant, characteristic
- **Exposure :** South-east

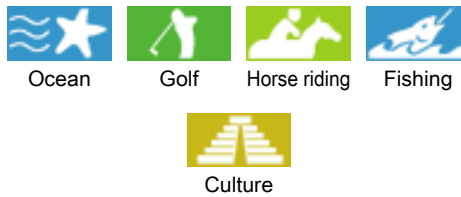
" The House is located in a small village of the Algarve, near Tavira, Faro, the beach is 3 minutes by car, swimming pool secured, shops are 200 m from the House. walks around Vila Nova. the city of Seville in Spain is at 1 h 15 car, station (a train that can take you to Faro, Tavira and Vila Real de San antonio). The Spanish border is 9 kms. Discovery and curiosities large beach of Manta Rota, lined by dunes. On-site restaurants, small bars in the village, Animation every night at Manta Rota; "

### Assets

- **Swimming pool :**  
Shared swimming pool, rectangular (length 23', width 13'), child secure, outside shower (open from 'january 01' till 'january 01')
- **Parking :**  
Parking uncovered : 1 internal, 1 reserved stall.
- **baby equipment :**  
Infant tub

Benefits :  
Driving range

### Surroundings & location



" Discovery and curiosities large beach of Manta Rota, lined by dunes. On-site restaurants, small bars in the village, Animation every night at Manta Rota. "

#### Leisure

- **Leisure activities less than 12 miles :**  
Bathing, pedalo, snorkelling, scuba diving, water skiing, windsurfing, sailing, tennis, riding school, pathway/broadwalk, coastal/forest paths, hiking, boat trips, horse trekking, fishing, deep-sea fishing, fishing, pétanque field
- **Supervised :**  
Sailing school, dive school
- **Attractions and relaxation :**  
Bar/pub, discotheque, restaurant, movie theater, park and garden, leisure park, sea world, nature reserve, art gallery, historical site, museum, theater, summer theater, festivals, antiques & bric-a-brac, local craftstore, cellar and wine tasting, casino, beauticians

#### Surroundings

- **Locality :**  
Sea/ocean 1.25mi.  
Sandy beach 1.25mi.  
Sea inlet 6mi.  
Public tennis court  
9 hole golf course 0.93mi.  
18 hole golf course  
Watersports centre 4.5mi.  
Mountain range 6mi.  
Marina 4.5mi.
- **Amenities :**  
Village center 660'  
Downtown 990'  
Bike/mountain bike hire 4.5mi.  
Scooter/motorbike hire 6mi.  
Car rental 1.85mi.  
Boat rental 4.5mi.  
Breadstore  
Local stores  
Supermarket  
Hairdressing salon  
Mail office  
Bank  
ATM  
Drugstore  
Doctor  
Nurse



Kitchen Area



bedroom



Kid's room

### Interior

- **Receive up to :**  
from 1 to 6 person(s) (4 adults, 2 kids)
- **Liveable floor area :**  
1,300 Sq.ft.
- **Interior layout :**  
5 Room(s), 3 bedroom(s), 2 bathroom, 2 toilets, living room 215 Sq.ft., separate kitchen, dining room, tv den, walk-in closet, laundry room
- **Sleeps - bed(s) :**  
2 full bed(s), 2 twin bed(s), 1 baby cradle
- **Guest facilities :**  
T.V., digital home cinema, DVD player, t.v points, cupboard, Hanging wardrobe, radio alarmclock, hair dryer, fly screens, fully air-conditioned, Glazed in area, Drapes, Blinds
- **Appliances :**  
Crockery/flatware, kitchen utensils, cafetiere, electric coffee maker, electric kettle, toaster, juicer, food processor, electric hobs, oven, micro-wave oven, extractor hood, reffridgerator, deep freeze, dish washer, washing machine, vacuum cleaner, iron, ironing board

### Exterior

- **Ground surface :**  
< 1,076 Sq.ft.
- **Outside accommodation :**  
Terrace 323 Sq.ft., covered terrace 194 Sq.ft., balcony 21.5 Sq.ft
- **Outside setting :**  
Private courtyard, enclosed grounds
- **Outside amenities :**  
Summer living area, BBQ, yard table(s), yard seat(s), parasol, yard seated area, 1 sun recliner(s), outside shower facilities



Kitchen Area

### Services

- **washing :**  
Sheets, Towels, Linen, Comforter(s), Pillows
- **Single family home :**  
Cleaning on departure

### For your guidance

- **For your guidance**  
Kids welcome  
Pets accepted under certain conditions (ask the owner)  
Present on site : pets  
Cell phone network coverage, personal transport advisable  
Water : hot/cold  
Local voltage supply : 220-240V / 50Hz  
Electricity supply : mains
- **Handicapped people welcome**  
Fitted out for the disabled : visually impaired, hard of hearing, mentally



Single family home

Photo album - 1



bedroom



Kitchen Area



Kid's room



Single family home



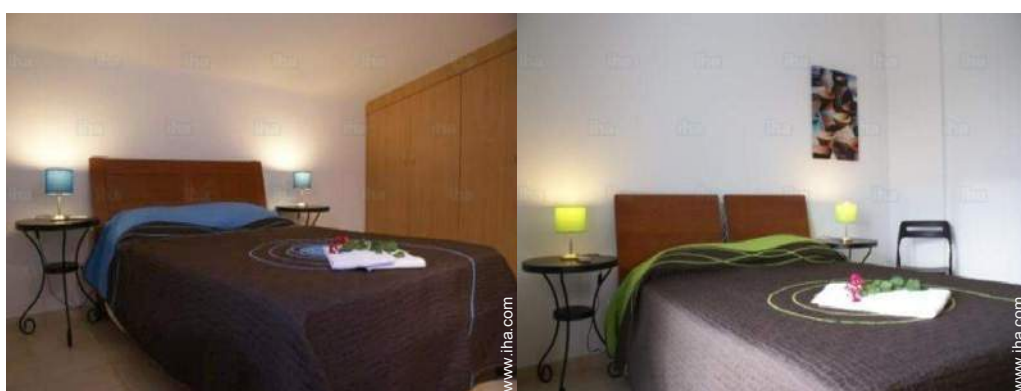
Kitchen Area

Photo album - 2



terrace

tv den



bedroom

bedroom



terrace

bathroom



terrace

view from the kitchen

Photo album - 3



Kitchen Area



view from the terrace



bathing



18 hole golf course



view from the sitting-room



dining room



panorama



Cities close by

[Favourite photo gallery - 1](#)



Feb 2016



Feb 2016

Feb 2016



Feb 2016

### Location



### Location & Access



GPS coordinates in degrees, minutes, seconds: Latitude 37°10'34"N - Longitude 7°32'13"W ([Dwelling](#))

#### Address

→ Rue da Dona Camilla  
8900 Vila Nova de Cacela

#### • Airport Faro

→ Faro, Algarve, Portugal  
→ Distance : 25mi.  
→ Time : 30'

#### • Airport Sevilla San Pablo

→ Seville, Sevilla Province, Andalusia,  
Spain  
→ Distance : 92mi.  
→ Time : 2h

- Vila Real de Santo António : (9mi.)
- Tavira : (4.5mi.)
- Faro : (25mi.)

### Contact

Spoken  
languages





# Vacation rental

## Vila Nova de Cacela - Portugal

### "Villa FRANZIA B"

[Book now](#)

#### Availability calendar - from : november 2019

Nov	F	Sa	Su	M	Tu	W	Th	F	Sa	Su	M	Tu	W	Th	F	Sa	Su	M	Tu	W	Th	F	Sa							
2019	1	2	3	4	5	6	7	8	9	10	11	12	13	14	15	16	17	18	19	20	21	22	23	24	25	26	27	28	29	30

Dec	Su	M	Tu	W	Th	F	Sa	Su	M	Tu	W	Th	F	Sa	Su	M	Tu	W	Th	F	Sa	Su	M	Tu	W	Th	F	Sa	Su	M	Tu
2019	1	2	3	4	5	6	7	8	9	10	11	12	13	14	15	16	17	18	19	20	21	22	23	24	25	26	27	28	29	30	31
	-	-	-	-	-	-	-	-	-	-	-	-	-	-	-	-	-	-	-	-	-	-	-	-	-	-	-	-	-	-	-

Jan	W	Th	F	Sa	Su	M	Tu	W	Th	F	Sa	Su	M	Tu	W	Th	F	Sa	Su	M	Tu	W	Th	F	Sa	Su	M	Tu	W	Th	F
2020	1	2	3	4	5	6	7	8	9	10	11	12	13	14	15	16	17	18	19	20	21	22	23	24	25	26	27	28	29	30	31
	-	-	-	-	-	-	-	-	-	-	-	-	-	-	-	-	-	-	-	-	-	-	-	-	-	-	-	-	-	-	-

Feb	Sa	Su	M	Tu	W	Th	F	Sa	Su	M	Tu	W	Th	F	Sa	Su	M	Tu	W	Th	F	Sa							
2020	1	2	3	4	5	6	7	8	9	10	11	12	13	14	15	16	17	18	19	20	21	22	23	24	25	26	27	28	29
	-	-	-	-	-	-	-	-	-	-	-	-	-	-	-	-	-	-	-	-	-	-	-	-	-	-	-	-	-

Mar	Su	M	Tu	W	Th	F	Sa	Su	M	Tu	W	Th	F	Sa	Su	M	Tu	W	Th	F	Sa	Su	M	Tu	W	Th	F	Sa	Su	M	Tu
2020	1	2	3	4	5	6	7	8	9	10	11	12	13	14	15	16	17	18	19	20	21	22	23	24	25	26	27	28	29	30	31
	-	-	-	-	-	-	-	-	-	-	-	-	-	-	-	-	-	-	-	-	-	-	-	-	-	-	-	-	-	-	-

Apr	W	Th	F	Sa	Su	M	Tu	W	Th	F	Sa	Su	M	Tu	W	Th	F	Sa	Su	M	Tu	W	Th	F	Sa	Su	M	Tu	W	Th
2020	1	2	3	4	5	6	7	8	9	10	11	12	13	14	15	16	17	18	19	20	21	22	23	24	25	26	27	28	29	30
	-	-	-	-	-	-	-	-	-	-	-	-	-	-	-	-	-	-	-	-	-	-	-	-	-	-	-	-	-	-

May	F	Sa	Su	M	Tu	W	Th	F	Sa	Su	M	Tu	W	Th	F	Sa	Su	M	Tu	W	Th	F	Sa	Su	M	Tu	W	Th	F	Sa	Su
2020	1	2	3	4	5	6	7	8	9	10	11	12	13	14	15	16	17	18	19	20	21	22	23	24	25	26	27	28	29	30	31
	-	-	-	-	-	-	-	-	-	-	-	-	-	-	-	-	-	-	-	-	-	-	-	-	-	-	-	-	-	-	-

June	M	Tu	W	Th	F	Sa	Su	M	Tu	W	Th	F	Sa	Su	M	Tu	W	Th	F	Sa	Su	M	Tu	W	Th	F	Sa	Su	M	Tu
2020	1	2	3	4	5	6	7	8	9	10	11	12	13	14	15	16	17	18	19	20	21	22	23	24	25	26	27	28	29	30
	-	-	-	-	-	-	-	-	-	-	-	-	-	-	-	-	-	-	-	-	-	-	-	-	-	-	-	-	-	-

Jul	W	Th	F	Sa	Su	M	Tu	W	Th	F	Sa	Su	M	Tu	W	Th	F	Sa	Su	M	Tu	W	Th	F	Sa	Su	M	Tu	W	Th	F
2020	1	2	3	4	5	6	7	8	9	10	11	12	13	14	15	16	17	18	19	20	21	22	23	24	25	26	27	28	29	30	31
	-	-	-	-	-	-	-	-	-	-	-	-	-	-	-	-	-	-	-	-	-	-	-	-	-	-	-	-	-	-	-

Aug	Sa	Su	M	Tu	W	Th	F	Sa	Su	M	Tu	W	Th	F	Sa	Su	M	Tu	W	Th	F	Sa	Su	M	Tu	W	Th	F	Sa	Su	M
2020	1	2	3	4	5	6	7	8	9	10	11	12	13	14	15	16	17	18	19	20	21	22	23	24	25	26	27	28	29	30	31
	-	-	-	-	-	-	-	-	-	-	-	-	-	-	-	-	-	-	-	-	-	-	-	-	-	-	-	-	-	-	-

Reserved
  Low season
  Mid season
  High season



Vacation rental  
Vila Nova de Cacela - Portugal  
"Villa FRANCIA B"

10  
[Book now](#)

Availability calendar - from : august 2020

Sep	Tu	W	Th	F	Sa	Su	M	Tu	W	Th	F	Sa	Su	M	Tu	W	Th	F	Sa	Su	M	Tu	W							
2020	1	2	3	4	5	6	7	8	9	10	11	12	13	14	15	16	17	18	19	20	21	22	23	24	25	26	27	28	29	30
	-	-	-	-	-	-	-	-	-	-	-	-	-	-	-	-	-	-	-	-	-	-	-	-	-	-	-	-	-	

Oct	Th	F	Sa	Su	M	Tu	W	Th	F	Sa	Su	M	Tu	W	Th	F	Sa	Su	M	Tu	W	Th	F	Sa							
2020	1	2	3	4	5	6	7	8	9	10	11	12	13	14	15	16	17	18	19	20	21	22	23	24	25	26	27	28	29	30	31
	-	-	-	-	-	-	-	-	-	-	-	-	-	-	-	-	-	-	-	-	-	-	-	-	-	-	-	-	-	-	

Reserved
  Low season
  Mid season
  High season

[Month : Next >>](#)

Rental rates - Villa - from 1 to 6 Person(s)

Rates	Night	Weekend	week	2 weeks	Month
<span style="color: green;">■</span> Low season	\$105* > 4	-	\$732*	-	-
<span style="color: blue;">■</span> Mid season	\$132* > 4	-	\$924*	-	-
<span style="color: orange;">■</span> High season	\$187* (Saturday) > 7	-	\$1309* (Saturday)	-	-
<span style="color: magenta;">■</span> Festive specials	\$143* > 4	-	\$1001*	-	-

(Check-in day) > Minimum Night

[Book now](#)

Booking conditions

• **Reservation**

- Payment made upon reservation : 40% of rental sum
- Payment balance : 1 week before the stay
- Deposit required : \$165\*

• **rentals**

- Service charges included
- Day tax included
- Cleaning charge on departure included
- Anticipated supplement for :  
- animals

Accepted methods of payment

- Bank transfer (wire) • Check

[▶ Book now](#)

[▶ Contact the owner](#)

Contact directly the property owners

[www.iha.com](http://www.iha.com)  
**Advert No.**  
**55587**  
**>> Book now <<**

Contact

Spoken languages



\* Converted at the rate indicated : €100 = \$110 = £91

Advert No. 55587

[www.iha.com](http://www.iha.com)



>> VACATION HOMES

DIRECT BY OWNERS