

Vacation rental Wattwiller Village House

Rural house in the quiet of Wattwiller. Ideal for rest, relax, meet with family or friends.



Village House, detached, 1 floor, separate entrance, in(on) a(an) Private property

Setting : quiet, mountainy

Capacity : from 2 to 8 person(s)

Bedroom(s) : 4

Room(s) : 6



Meublés de Tourisme (2 stars)

Wattwiller - Upper Rhine (68) - Alsace

France

Reservation : +33 (0) 3 89 75 54 81 (France)

Advert No. 19931

www.iha.com



>> VACATION HOMES

DIRECT BY OWNERS

Vacation rental



Village House, detached, 1 floor, separate entrance, in(on) a(an) Private property

- **Ideal for all age groups, large families**

- **View :** mountain, garden/park, courtyard, prairie, Vineyards, river

- **Setting :** quiet, mountainy

- **Exposure :** South

" The great closed court allows to store cars and bicycles and take food out of sight. The house is totally independent. You will be rocked by the creek running through the property. The spacious rooms will put you at ease and give you a pleasant stay. Our younger tenants will be delighted by the presence of a few hens and rabbits. "

Assets

- **Parking :**

Covered parking : 3 carport.

- **Advantages :**

Ski locker, table football, 1 bike(s)

- **baby equipment :**

High chair



Single family home

Surroundings & location



Mountain

" Alsace is a historical and cultural region. During your stay you will have the opportunity to discover all of its attractions (museums, castles, wine cellars, farm Inns, picturesque villages, Christmas markets and skiing in winter). You can even take advantage of your stay to make a getaway to Switzerland and Germany. We live in the village and therefore we are at your disposal for advice in your getaways. "

Leisure

- **Leisure activities less than 12 miles :**

Cross-country skiing, ice-skating, bathing, pedalo, golf, tennis, riding school, pathway/broadwalk, hiking, mountain bike (path), horse trekking, fishing

Surroundings

- **Locality :**

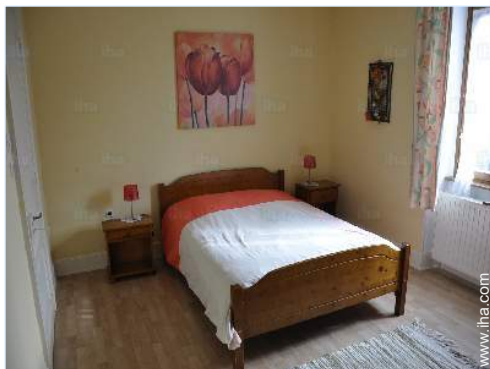
Ski slopes 15.5mi.
Ski lifts 15.5mi.
Ice skating rink 15.5mi.
Heated swimming pool 2.5mi.
Public swimming pool 2.5mi.
Public tennis court 2.5mi.
9 hole golf course 6mi.
River 1.5mi.
Stretch of water 3mi.
Lake 18.5mi.
Forest 660'
Mountain range 1.85mi.



bedroom



southerly view



bedroom

Exterior

- **Ground surface :**
0.25 acre.
- **Outside setting :**
Private courtyard, enclosed grounds, yard, lawn, orchard, kitchen garden, creek
- **Outside amenities :**
BBQ, yard table(s), 10 yard seat(s), 1 chaise (s) longue(s), 2 sun recliner(s)



bedroom

Interior

- **Receive up to :**
from 2 to 8 person(s)
- **Liveable floor area :**
1,300 Sq.ft.
- **Interior layout :**
6 Room(s), 4 bedroom(s), 1 bathroom, 1 toilets, living room 215 Sq.ft., large american style kitchen, pantry
- **Sleeps - bed(s) :**
2 full bed(s), 4 twin bed(s), 1 guest folding bed(s) 1 pers, 1 sleeper sofa(s) 1 pers, 1 baby cradle
- **Guest facilities :**
T.V., board games, book collection, wardrobe, Hanging wardrobe, heated towel rail, central heating, Drapes, Double glazed, fire alarm
- **Appliances :**
Crockery/flatware, kitchen utensils, cafetiere, electric coffee maker, electric kettle, toaster, electric raclette set, gaz stove, oven, micro-wave oven, extractor hood, refridgerator, deep freeze, washing machine, vacuum cleaner, iron, ironing board

Services

- **washing :**
Sheets supplement, Towels supplement, Comforter(s), Comforter(s), Pillows
- **Single family home :**
Cleaning on departure supplement (+\$47*), Parking

For your guidance

- **For your guidance**
Pets accepted under certain conditions (ask the owner)
Present on site : farm animals
Non smoking rental



bedroom

Photo album - 1



Single family home



southerly view



bedroom



bedroom



bedroom

Photo album - 2



bedroom



bedroom



furniture



bathroom



kitchen



kitchen

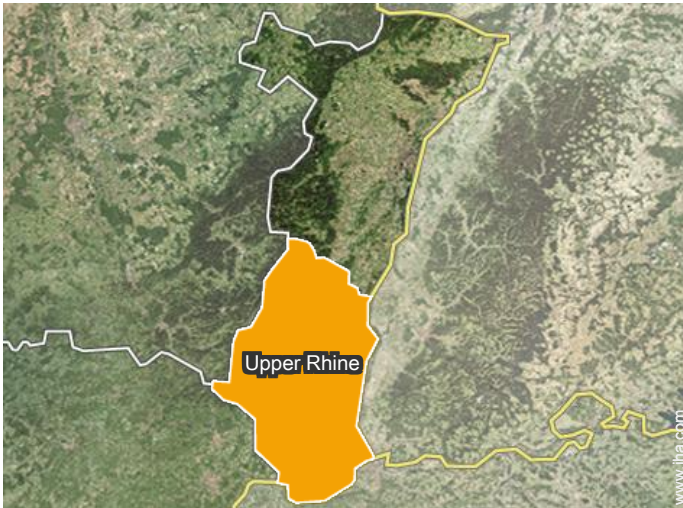


Mountain



view over the mountain

Location



Location & Access

" Wattwiller, known by its nitrate-free water, is about 20 km from Colmar and Mulhouse, and 4 km from Cernay. Also located at the foot of the Vieil Armand, on the route of wines and crêtes. Our house, at the end of village, lies at the foot of yellow chateau' and the vineyards. "



GPS coordinates in degrees, minutes, seconds: Latitude 47°50'4"N - Longitude 7°10'37"E (Dwelling)

Address

→ 4 rue de la Victoire
68700 Wattwiller

• Freeway (exit) uffholtz

→ Cernay, Upper Rhine, Alsace, France
→ Distance : 2.5mi.
→ Time : 5'

- Cernay : (2.5mi.)
- Thann : (4.5mi.)
- Colmar : (18.5mi.)

Contact

Spoken languages



Vacation rental
Wattwiller - France
Village House

7
[Book now](#)

Availability calendar - from : january 2018

Jan	M	Tu	W	Th	F	Sa	Su	M	Tu	W	Th	F	Sa	Su	M	Tu	W	Th	F	Sa	Su	M	Tu	W							
2018	1	2	3	4	5	6	7	8	9	10	11	12	13	14	15	16	17	18	19	20	21	22	23	24	25	26	27	28	29	30	31
																						-	-	-	-	-	-	-	-	-	-

Feb	Th	F	Sa	Su	M	Tu	W	Th	F	Sa	Su	M	Tu	W	Th	F	Sa	Su	M	Tu	W								
2018	1	2	3	4	5	6	7	8	9	10	11	12	13	14	15	16	17	18	19	20	21	22	23	24	25	26	27	28	
	-	-	-	-	-	-	-	-	-	-	-	-	-	-	-	-	-	-	-	-	-	-	-	-	-	-	-	-	-

Mar	Th	F	Sa	Su	M	Tu	W	Th	F	Sa	Su	M	Tu	W	Th	F	Sa	Su	M	Tu	W	Th	F	Sa							
2018	1	2	3	4	5	6	7	8	9	10	11	12	13	14	15	16	17	18	19	20	21	22	23	24	25	26	27	28	29	30	31
	-	-	-	-	-	-	-	-	-	-	-	-	-	-	-	-	-	-	-	-	-	-	-	-	-	-	-	-	-	-	

Apr	Su	M	Tu	W	Th	F	Sa	Su	M	Tu	W	Th	F	Sa	Su	M	Tu	W	Th	F	Sa	Su	M							
2018	1	2	3	4	5	6	7	8	9	10	11	12	13	14	15	16	17	18	19	20	21	22	23	24	25	26	27	28	29	30
	-	-	-	-	-	-	-	-	-	-	-	-	-	-	-	-	-	-	-	-	-	-	-	-	-	-	-	-	-	-

May	Tu	W	Th	F	Sa	Su	M	Tu	W	Th	F	Sa	Su	M	Tu	W	Th	F	Sa	Su	M	Tu	W	Th							
2018	1	2	3	4	5	6	7	8	9	10	11	12	13	14	15	16	17	18	19	20	21	22	23	24	25	26	27	28	29	30	31
	-	-	-	-	-	-	-	-	-	-	-	-	-	-	-	-	-	-	-	-	-	-	-	-	-	-	-	-	-	-	

June	F	Sa	Su	M	Tu	W	Th	F	Sa	Su	M	Tu	W	Th	F	Sa	Su	M	Tu	W	Th	F	Sa							
2018	1	2	3	4	5	6	7	8	9	10	11	12	13	14	15	16	17	18	19	20	21	22	23	24	25	26	27	28	29	30
	-	-	-	-	-	-	-	-	-	-	-	-	-	-	-	-	-	-	-	-	-	-	-	-	-	-	-	-	-	-

Jul	Su	M	Tu	W	Th	F	Sa	Su	M	Tu	W	Th	F	Sa	Su	M	Tu	W	Th	F	Sa	Su	M	Tu							
2018	1	2	3	4	5	6	7	8	9	10	11	12	13	14	15	16	17	18	19	20	21	22	23	24	25	26	27	28	29	30	31
	-	-	-	-	-	-	-	-	-	-	-	-	-	-	-	-	-	-	-	-	-	-	-	-	-	-	-	-	-	-	

Aug	W	Th	F	Sa	Su	M	Tu	W	Th	F	Sa	Su	M	Tu	W	Th	F	Sa	Su	M	Tu	W	Th	F							
2018	1	2	3	4	5	6	7	8	9	10	11	12	13	14	15	16	17	18	19	20	21	22	23	24	25	26	27	28	29	30	31
	-	-	-	-	-	-	-	-	-	-	-	-	-	-	-	-	-	-	-	-	-	-	-	-	-	-	-	-	-	-	

Sep	Sa	Su	M	Tu	W	Th	F	Sa	Su	M	Tu	W	Th	F	Sa	Su	M	Tu	W	Th	F	Sa	Su							
2018	1	2	3	4	5	6	7	8	9	10	11	12	13	14	15	16	17	18	19	20	21	22	23	24	25	26	27	28	29	30
	-	-	-	-	-	-	-	-	-	-	-	-	-	-	-	-	-	-	-	-	-	-	-	-	-	-	-	-	-	-

Oct	M	Tu	W	Th	F	Sa	Su	M	Tu	W	Th	F	Sa	Su	M	Tu	W	Th	F	Sa	Su	M	Tu	W							
2018	1	2	3	4	5	6	7	8	9	10	11	12	13	14	15	16	17	18	19	20	21	22	23	24	25	26	27	28	29	30	31
	-	-	-	-	-	-	-	-	-	-	-	-	-	-	-	-	-	-	-	-	-	-	-	-	-	-	-	-	-	-	

Vacation rental
Upper Rhine - Alsace
Village House

8
[Book now](#)

Availability calendar - from : october 2018

Nov	Th	F	Sa	Su	M	Tu	W	Th	F	Sa	Su	M	Tu	W	Th	F	Sa	Su	M	Tu	W	Th	F							
2018	1	2	3	4	5	6	7	8	9	10	11	12	13	14	15	16	17	18	19	20	21	22	23	24	25	26	27	28	29	30
-	-	-	-	-	-	-	-	-	-	-	-	-	-	-	-	-	-	-	-	-	-	-	-	-	-	-	-	-	-	

Dec	Sa	Su	M	Tu	W	Th	F	Sa	Su	M	Tu	W	Th	F	Sa	Su	M	Tu	W	Th	F	Sa	Su	M							
2018	1	2	3	4	5	6	7	8	9	10	11	12	13	14	15	16	17	18	19	20	21	22	23	24	25	26	27	28	29	30	31
-	-	-	-	-	-	-	-	-	-	-	-	-	-	-	-	-	-	-	-	-	-	-	-	-	-	-	-	-	-		

[Month : Next >>](#)

Rental rates - Village House - from 2 to 8 Person(s)

Rates	Night	Weekend	week	2 weeks	Month
■ Mid season	-	\$176*	\$446*	-	-
■ High season	-	\$176*	\$657*	-	-

[Book now](#)

Booking conditions

• **Reservation**

- Payment made upon reservation : 25% of rental sum
- Payment balance : on handing over the keys
- Deposit required : \$176*

• **rentals**

- Service charges included
- Day tax in addition
- Cleaning charge levy on departure : \$47*

[▶ Book now](#)

[▶ Contact the owner](#)

Accepted methods of payment

- Bank transfer (wire)
- Check
- Cash
- Holiday coupon

Contact directly the property owners

www.iha.com
Advert No.
19931
[>> Book now <<](#)

Contact

Spoken languages



* Converted at the rate indicated : €100 = \$117.29 = £89.59

Advert No. 19931

www.iha.com



[>> VACATION HOMES](#)

DIRECT BY OWNERS