

# Vacation rental

## Ypres

### "Poorthuis"

Apartment in the historic centre of Ieper on 80 metres from the market square; In Flanders Fields Museum; Office of tourism and the Menin gate where every night at 20:00 the Last Post is blown.



**Apartment-Flat** 2nd floor, separate entrance, in(on) a(an) Charming House 2 floors

Setting : historical, medieval

Capacity : 4 person(s)

Bedroom(s) : 2



Meublés de Tourisme (3 stars)

Ypres - West Flanders - Flanders

Belgium

Advert No. 45144

Reservation : +32 (0) 477781918 (Belgium)

www.ihaholiday.com



>> VACATION HOMES

DIRECT BY OWNERS

### Vacation rental



Apartment-Flat 2nd floor, separate entrance, in(on) a(an) Charming House 2 floors

- Ideal for family, all age groups
- View : city, monument, street/avenue
- Setting : historical, medieval

" Cathedral apartment on the 1st floor is a very comfortable family apartment. There is 1 bedroom double bed and a small bedroom with bunk beds. A bath with shower is ready for you after a relaxing walk on the fortresses or other activity. Separate kitchen with modern equipment. There is air conditioning, free wireless internet and digital tv. Minimum stay of 2 nights. There are 2 bakeries in the street and a large supermarket within walking distance. "

### Assets

- Parking :  
Covered parking : 1 closed individual place (s).



interior

### Surroundings & location



City



Golf

" Ieper is a city that will definitely delight you. Numerous spots and museums to discover. The main market square with cosy cafés and restaurants. In the In Flanders Fields Museum you experience the history of the first world war in Flanders. Since 1928 the Last Post every evening at 8 p.m. is blown. Visit the Lakenhalle, St Martin's Cathedral, Lille ports and fortresses. A few kilometres from Ypres is the Hooze Crater Museum in a restored Church. In Zonnebeke you can visit the Memorial Museum Passchendaele and Tyne Cot Cemetery. For the children there is Bellewaarde Park. ... "

#### Leisure

- Leisure activities less than 12 miles :  
Bathing, pedalo, windsurfing, golf, tennis, squash, riding school, pathway/broadwalk, horse trekking, skate board (ramps), ATV/ Quad Bike, ten-pin bowling, basketball, volleyball, fishing
- Supervised :  
Tennis school, riding school

#### Surroundings

- Locality :  
Ski slopes 6mi.  
Sea/ocean 25mi.  
Sandy beach 25mi.  
Public swimming pool 0.93mi.  
Public tennis court 0.3mi.  
9 hole golf course 0.62mi.  
18 hole golf course 4.5mi.  
Lake 3mi.  
Forest 4.5mi.



bedroom



living room



bedroom

## Interior

- **Receive up to :**  
4 person(s) (2 adults, 2 kids)
- **Liveable floor area :**  
700 Sq.ft.
- **Interior layout :**  
2 bedroom(s), 1 bathroom, 1 toilets, living room, sitting room, separate kitchen
- **Sleeps - bed(s) :**  
1 full bed(s), 1 bunk beds, 1 foldaway bed(s)  
1 pers
- **Guest facilities :**  
T.V., DVD player, wifi, wardrobe, Hanging wardrobe, partly air-conditioned, central heating, Drapes
- **Appliances :**  
Crockery/flatware, kitchen utensils, cafetiere, electric coffee maker, electric espresso coffee maker, electric kettle, electric stove, oven, micro-wave oven, refridgerator, dish washer, vacuum cleaner

## Exterior

- **Outside setting :**  
Enclosed grounds



separate kitchen

## Services

- **washing :**  
Sheets, Towels, Linen, Comforter(s), Comforter(s), Pillows
- **Single family home :**  
Cleaning on departure

## For your guidance

- **For your guidance**  
Kids welcome  
Non smoking rental



bunk beds

Photo album - 1



interior



living room



bedroom



bedroom



bunk beds

Photo album - 2



separate kitchen

separate kitchen

kitchen



bathroom

interior

interior



interior

bedroom

bathroom



separate kitchen

Photo album - 3



interior

Interior layout and facilities

interior



living room

sleeping area

sleeping area



sitting room

kitchen

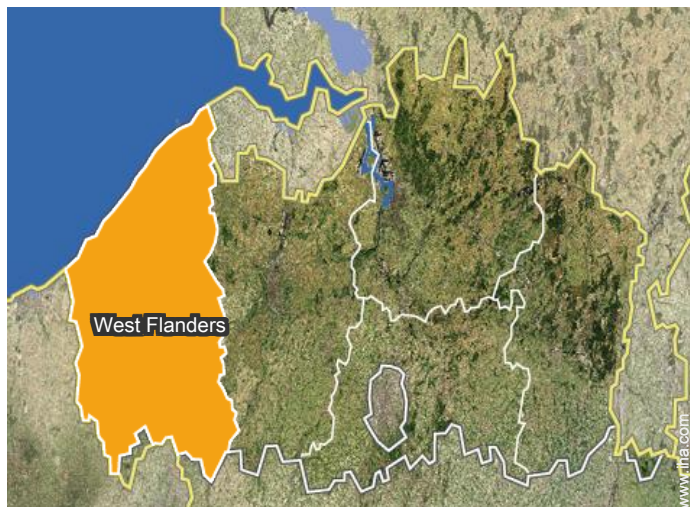
kitchen



Interior layout

Single family home

## Location



## Location & Access

"The luxurious apartments are situated 80 metres from the market square; In Flanders Fields Museum; Office of tourism and the Menin gate."



GPS coordinates in degrees, minutes, seconds: Latitude 50°51'9"N - Longitude 2°53'12"E (Dwelling)

### Address

→ Diksmuidestraat 26  
8900 Ypres

### • Freeway (exit) A19

→ Ypres, West Flanders, Flanders, Belgium  
→ Distance : 1.25mi.  
→ Time : 5'

- Kortrijk : (18.5mi.)
- Bruges : (31mi.)
- Koksijde : (25mi.)

## Contact

Spoken languages



# Vacation rental West Flanders - Flanders "Poorthuis"

## Availability calendar - from : april 2018

Apr	Su	M	Tu	W	Th	F	Sa	Su	M	Tu	W	Th	F	Sa	Su	M	Tu	W	Th	F	Sa	Su	M							
2018	1	2	3	4	5	6	7	8	9	10	11	12	13	14	15	16	17	18	19	20	21	22	23	24	25	26	27	28	29	30

May	Tu	W	Th	F	Sa	Su	M	Tu	W	Th	F	Sa	Su	M	Tu	W	Th	F	Sa	Su	M	Tu	W	Th							
2018	1	2	3	4	5	6	7	8	9	10	11	12	13	14	15	16	17	18	19	20	21	22	23	24	25	26	27	28	29	30	31
	-	-	-	-	-	-	-	-	-	-	-	-	-	-	-	-	-	-	-	-	-	-	-	-	-	-	-	-	-	-	

June	F	Sa	Su	M	Tu	W	Th	F	Sa	Su	M	Tu	W	Th	F	Sa	Su	M	Tu	W	Th	F	Sa							
2018	1	2	3	4	5	6	7	8	9	10	11	12	13	14	15	16	17	18	19	20	21	22	23	24	25	26	27	28	29	30
	-	-	-	-	-	-	-	-	-	-	-	-	-	-	-	-	-	-	-	-	-	-	-	-	-	-	-	-	-	-

Jul	Su	M	Tu	W	Th	F	Sa	Su	M	Tu	W	Th	F	Sa	Su	M	Tu	W	Th	F	Sa	Su	M	Tu							
2018	1	2	3	4	5	6	7	8	9	10	11	12	13	14	15	16	17	18	19	20	21	22	23	24	25	26	27	28	29	30	31
	-	-	-	-	-	-	-	-	-	-	-	-	-	-	-	-	-	-	-	-	-	-	-	-	-	-	-	-	-	-	

Aug	W	Th	F	Sa	Su	M	Tu	W	Th	F	Sa	Su	M	Tu	W	Th	F	Sa	Su	M	Tu	W	Th	F							
2018	1	2	3	4	5	6	7	8	9	10	11	12	13	14	15	16	17	18	19	20	21	22	23	24	25	26	27	28	29	30	31
	-	-	-	-	-	-	-	-	-	-	-	-	-	-	-	-	-	-	-	-	-	-	-	-	-	-	-	-	-	-	

Sep	Sa	Su	M	Tu	W	Th	F	Sa	Su	M	Tu	W	Th	F	Sa	Su	M	Tu	W	Th	F	Sa	Su							
2018	1	2	3	4	5	6	7	8	9	10	11	12	13	14	15	16	17	18	19	20	21	22	23	24	25	26	27	28	29	30
	-	-	-	-	-	-	-	-	-	-	-	-	-	-	-	-	-	-	-	-	-	-	-	-	-	-	-	-	-	-

Oct	M	Tu	W	Th	F	Sa	Su	M	Tu	W	Th	F	Sa	Su	M	Tu	W	Th	F	Sa	Su	M	Tu	W							
2018	1	2	3	4	5	6	7	8	9	10	11	12	13	14	15	16	17	18	19	20	21	22	23	24	25	26	27	28	29	30	31
	-	-	-	-	-	-	-	-	-	-	-	-	-	-	-	-	-	-	-	-	-	-	-	-	-	-	-	-	-	-	

Nov	Th	F	Sa	Su	M	Tu	W	Th	F	Sa	Su	M	Tu	W	Th	F	Sa	Su	M	Tu	W	Th	F							
2018	1	2	3	4	5	6	7	8	9	10	11	12	13	14	15	16	17	18	19	20	21	22	23	24	25	26	27	28	29	30
	-	-	-	-	-	-	-	-	-	-	-	-	-	-	-	-	-	-	-	-	-	-	-	-	-	-	-	-	-	-

Dec	Sa	Su	M	Tu	W	Th	F	Sa	Su	M	Tu	W	Th	F	Sa	Su	M	Tu	W	Th	F	Sa	Su	M							
2018	1	2	3	4	5	6	7	8	9	10	11	12	13	14	15	16	17	18	19	20	21	22	23	24	25	26	27	28	29	30	31
	-	-	-	-	-	-	-	-	-	-	-	-	-	-	-	-	-	-	-	-	-	-	-	-	-	-	-	-	-	-	

Jan	Tu	W	Th	F	Sa	Su	M	Tu	W	Th	F	Sa	Su	M	Tu	W	Th	F	Sa	Su	M	Tu	W	Th							
2019	1	2	3	4	5	6	7	8	9	10	11	12	13	14	15	16	17	18	19	20	21	22	23	24	25	26	27	28	29	30	31
	-	-	-	-	-	-	-	-	-	-	-	-	-	-	-	-	-	-	-	-	-	-	-	-	-	-	-	-	-	-	





Vacation rental  
Ypres - Belgium  
"Poorthuis"

9  
[Book now](#)




Availability calendar - from : january 2019

Feb	F	Sa	Su	M	Tu	W	Th	F	Sa	Su	M	Tu	W	Th	F	Sa	Su	M	Tu	W	Th	F	Sa	Su	M	Tu	W	Th
2019	1	2	3	4	5	6	7	8	9	10	11	12	13	14	15	16	17	18	19	20	21	22	23	24	25	26	27	28
-	-	-	-	-	-	-	-	-	-	-	-	-	-	-	-	-	-	-	-	-	-	-	-	-	-	-	-	-

Mar	F	Sa	Su	M	Tu	W	Th	F	Sa	Su	M	Tu	W	Th	F	Sa	Su	M	Tu	W	Th	F	Sa	Su							
2019	1	2	3	4	5	6	7	8	9	10	11	12	13	14	15	16	17	18	19	20	21	22	23	24	25	26	27	28	29	30	31
-	-	-	-	-	-	-	-	-	-	-	-	-	-	-	-	-	-	-	-	-	-	-	-	-	-	-	-	-	-		

[Month : Next >>](#)

Rental rates - Apartment-Flat - 4 Person(s)

Rates	Night	Weekend	week	2 weeks	Month
 Low season	\$148* > 2	\$296* (Friday)	-	-	-
 Mid season	\$154* > 2	\$309* (Friday)	-	-	-
 High season	\$160* > 2	\$321* (Friday)	-	-	-

(Check-in day) > Minimum Night

[Book now](#)

Accepted methods of payment

- Bank transfer (wire)
- Cash

Contact

Spoken languages



[▶ Book now](#)

[▶ Contact the owner](#)

Contact directly the property owners

[www.ihaholidayads.com](http://www.ihaholidayads.com)  
Advert No.  
45144  
[>> Book now <<](#)

\* Converted at the rate indicated : €100 = \$123.46 = £88.94

Advert No. 45144

[www.ihaholidayads.com](http://www.ihaholidayads.com)

