

# Vacation rental Zeewolde "Bij Het Bos"

Group accommodation for 8-16 people, centrally located in Flevoland, Netherlands. Space and calm ... affordable luxury.



Villa, detached, 1 floor, separate entrance, in(on) a(an) Park

Setting : natural, waterfront

Capacity : from 8 to 16 person(s)  
Bedroom(s) : 4

Zeewolde - Flevoland

Netherlands

Advert No. 10228

Reservation : +31 (0) 5240171 (Netherlands)

www.iha.com



## Vacation rental



Villa, detached, 1 floor, separate entrance, in(on) a(an) Park

- **Ideal for family groups, group**
- **View** : unobscured, country side, swimming pool, garden/park, farmland, forest
- **Setting** : natural, waterfront

" This Holiday House is modern and homely furnished and ideal for young and old. For a weekend with family or friends you can come here with up to 16 people. There are 2 kitchens and 2 bathrooms and 3 toilets. On the ground floor there is an apartment with 2-4 beds and a single room. On the first floor 2 bedrooms for 4 persons and 1 for 4-5 persons. In the garden around the house you can use the Berg Trampoline, table tennis and badminton or you can play a game on the grass. For children there are two swings, a slide and a sand pit and sand table for the little ones. Under the veranda, there is a large wooden table with benches where you can sit with the group. There is also a large barbeque you can use. The villa is located near the forest, yet close to the main roads to Amsterdam, Almere, Harderwijk or Lelystad. "

## Assets

- **Swimming pool** :  
Shared swimming pool, rectangular, outside shower (open from 'june 01' till 'september 01')
- **Tennis** :  
Shared tennis, Surface synthetic
- **Parking** :  
Parking uncovered : 5 off road.
- **Advantages** :  
Ping-pong table, 4 ping-pong bats, pétanque field, 1 pétanque set(s)
- **baby equipment** :  
Playpen

**Benefits :**  
Marina mooring space

## Surroundings & location



Countryside



Fishing

" Zeewolde is the youngest village in Netherlands. The park itself there is close to the holiday home a tennis court and outdoor swimming pool (unheated) for common use (free for our guests). The forest is within walking distance. 15 minutes by car the beach in Zeewolde. Flevoland is known for its nature (forest and water) but you can also look up in the hustle and bustle of the city. Amsterdam is about 40 minutes and also the Dolfinarium in Harderwijk (approx 20 minutes) and Amersfoort (approx 30 minutes) are nearby. Walibi in Dronten is approx 30 minutes drive away. In Flevoland is enough to see and do. "

## Leisure

- **Leisure activities less than 12 miles** :

Bathing, windsurfing, sailing, kite surfing, canoeing, golf, tennis, squash, riding school, pathway/broadwalk, hiking, mini-golf, skate board (ramps), go-karting, RC aeromodelling field, ten-pin bowling, fishing, fishing

- **Supervised** :

Sailing school, dive school, tennis school, riding school

- **Attractions and relaxation** :

Bar/pub, restaurant, movie theater, leisure park, nature reserve, theater, sauna, health spa, beauticians

## Surroundings

- **Locality** :

Ice skating rink 12.5mi.  
Heated swimming pool 4.5mi.  
Sandy beach 4.5mi.  
Nudist beach 12.5mi.  
Public swimming pool <165'  
Public tennis court <165'  
18 hole golf course 12.5mi.  
Flying clubs 12.5mi.  
Windsurfing spots 4.5mi.  
Surfing spots 4.5mi.  
River 0.3mi.  
Lake 4.5mi.  
Forest 660'  
Marina 4.5mi.  
Slipway 0.93mi.

- **Amenities** :

Village center 4.5mi.  
Downtown 4.5mi.  
Bus pick up point beach 0.93mi.  
Bike/mountain bike hire <165'

Car rental 4.5mi.  
Breadstore 4.5mi.  
Local stores 4.5mi.  
Supermarket 3mi.  
Hairdressing salon 4.5mi.  
Mail office 3mi.  
Bank 4.5mi.  
ATM 4.5mi.  
Drugstore 4.5mi.  
Doctor 3mi.  
Hospital 12.5mi.



Tennis - synthetic surface



shared swimming pool



pétanque field

### Exterior

- **Ground surface :**  
0.25 acre.
- **Outside accommodation :**  
Terrace 1,300 Sq.ft., covered terrace 194 Sq.ft., yard shed
- **Outside setting :**  
Enclosed grounds, yard 0.25 acre., kitchen garden 172 Sq.ft.
- **Outside amenities :**  
BBQ, yard table(s), yard seat(s), parasol, climbing frame



veranda

### Interior

- **Receive up to :**  
from 8 to 16 person(s)
- **Liveable floor area :**  
1,300 Sq.ft.
- **Interior layout :**  
4 bedroom(s), sleeping den, 1 bathroom, 2 shower room, 3 toilets, living room 380 Sq.ft., sitting room 172 Sq.ft., large american style kitchen, dining room, dining area, cosy nook, tv den, laundry room, veranda
- **Sleeps - bed(s) :**  
1 sleeper sofa(s) 2 pers, 14 twin bed(s), 1 bunk beds
- **Guest facilities :**  
Fireplace, T.V., DVD player, board games, book collection, movie collection, wifi, wardrobe, cupboard, Hanging wardrobe, radio alarmclock, hair dryer, heated towel rail, power shower, mosquito nets, fly screens, partly air-conditioned, mobile cool air fan, central heating, skylights, Drapes, Double glazed, fire alarm
- **Appliances :**  
Crockery/flatware, kitchen utensils, cafetiere, electric coffee maker, electric kettle, toaster, juicer, food processor, fondue set, electric hobs, mini-oven, micro-wave oven, extractor hood, refridgerator, deep freeze, ice maker, dish washer, washing machine, clothes dryer, vacuum cleaner, iron, ironing board

### Services

- **washing :**  
Sheets, Linen supplement (1 X / per week + \$6\*), Comforter(s), Pillows
- **Single family home :**  
Cleaning supplement, Cleaning on departure supplement (+\$111\*), Yard/swimming pool maintenance, Parking
- **Personnel :**  
Chef(s) supplement
- **Restauration :**  
Breakfast supplement (+\$9\*), BBQ meal supplement, Picnic basket supplement

### For your guidance

- **For your guidance**  
Kids welcome  
No pet allowed  
Non smoking rental, personal transport advisable  
Water : hot/cold  
Local voltage supply : 220V / 60Hz  
Electricity supply : mains
- **Handicapped people welcome**  
Wheelchair access  
Fitted out for the disabled : mobility, mentally



fishing

Photo album - 1



Villa



shared swimming pool



Tennis - synthetic surface



pétanque field



fishing



veranda

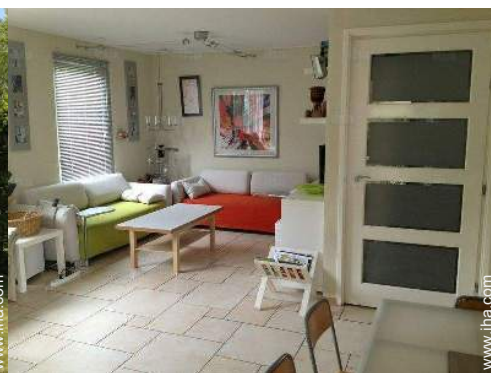
Photo album - 2



yard



yard table(s)



living room



dining area



kitchen



bathroom



bathroom



shower room



large bedroom



large bedroom

Photo album - 3



large bedroom



large bedroom



large bedroom



large bedroom



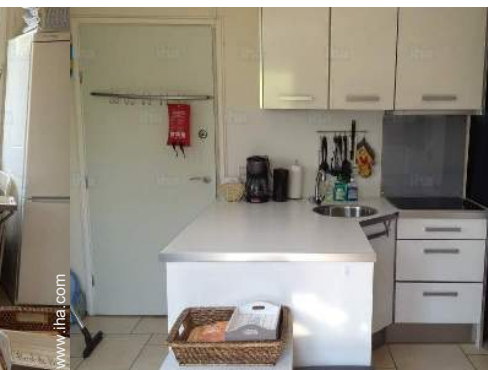
large bedroom



the apartment



the apartment



Kitchen Area



sleeping area



the apartment



shower room

### Location



### Location & Access

"Zeewolde is centrally located in the Netherlands. For trips in Flevoland and the surrounding provinces, this holiday home ideal."



GPS coordinates in degrees, minutes, seconds: Latitude 52°20'49"N - Longitude 5°28'52"E (Dwelling)

#### Address

→ Bosruiterweg 25-3  
3897 LV Zeewolde

#### • Airport Schiphol

→ Amsterdam, North Holland, Netherlands  
→ Distance : 31mi.  
→ Time : 45'

#### • Bus station Almere Stad

→ Almere, Flevoland, Netherlands  
→ Distance : 18.5mi.  
→ Time : 45'

#### • Bus station Harderwijk

→ Harderwijk, Gelderland, Netherlands  
→ Distance : 12.5mi.

→ Time : 30'

- Amsterdam : (31mi.)
- Almere : (15.5mi.)
- Harderwijk : (12.5mi.)

### Contact

Spoken languages



# Vacation rental Flevoland - Netherlands "Bij Het Bos"

8  
[Book now](#)

## Availability calendar - from : october 2017

Oct	Su	M	Tu	W	Th	F	Sa	Su	M	Tu	W	Th	F	Sa	Su	M	Tu	W	Th	F	Sa	Su	M	Tu							
2017	1	2	3	4	5	6	7	8	9	10	11	12	13	14	15	16	17	18	19	20	21	22	23	24	25	26	27	28	29	30	31

Nov	W	Th	F	Sa	Su	M	Tu	W	Th	F	Sa	Su	M	Tu	W	Th	F	Sa	Su	M	Tu	W	Th							
2017	1	2	3	4	5	6	7	8	9	10	11	12	13	14	15	16	17	18	19	20	21	22	23	24	25	26	27	28	29	30
	-	-	-	-	-	-	-	-	-	-	-	-	-	-	-	-	-	-	-	-	-	-	-	-	-	-	-	-	-	-

Dec	F	Sa	Su	M	Tu	W	Th	F	Sa	Su	M	Tu	W	Th	F	Sa	Su	M	Tu	W	Th	F	Sa	Su							
2017	1	2	3	4	5	6	7	8	9	10	11	12	13	14	15	16	17	18	19	20	21	22	23	24	25	26	27	28	29	30	31
	-	-	-	-	-	-	-	-	-	-	-	-	-	-	-	-	-	-	-	-	-	-	-	-	-	-	-	-	-	-	

Jan	M	Tu	W	Th	F	Sa	Su	M	Tu	W	Th	F	Sa	Su	M	Tu	W	Th	F	Sa	Su	M	Tu	W							
2018	1	2	3	4	5	6	7	8	9	10	11	12	13	14	15	16	17	18	19	20	21	22	23	24	25	26	27	28	29	30	31
	-	-	-	-	-	-	-	-	-	-	-	-	-	-	-	-	-	-	-	-	-	-	-	-	-	-	-	-	-	-	

Feb	Th	F	Sa	Su	M	Tu	W	Th	F	Sa	Su	M	Tu	W	Th	F	Sa	Su	M	Tu	W							
2018	1	2	3	4	5	6	7	8	9	10	11	12	13	14	15	16	17	18	19	20	21	22	23	24	25	26	27	28
	-	-	-	-	-	-	-	-	-	-	-	-	-	-	-	-	-	-	-	-	-	-	-	-	-	-	-	-

Mar	Th	F	Sa	Su	M	Tu	W	Th	F	Sa	Su	M	Tu	W	Th	F	Sa	Su	M	Tu	W	Th	F	Sa							
2018	1	2	3	4	5	6	7	8	9	10	11	12	13	14	15	16	17	18	19	20	21	22	23	24	25	26	27	28	29	30	31
	-	-	-	-	-	-	-	-	-	-	-	-	-	-	-	-	-	-	-	-	-	-	-	-	-	-	-	-	-	-	

Apr	Su	M	Tu	W	Th	F	Sa	Su	M	Tu	W	Th	F	Sa	Su	M	Tu	W	Th	F	Sa	Su	M							
2018	1	2	3	4	5	6	7	8	9	10	11	12	13	14	15	16	17	18	19	20	21	22	23	24	25	26	27	28	29	30
	-	-	-	-	-	-	-	-	-	-	-	-	-	-	-	-	-	-	-	-	-	-	-	-	-	-	-	-	-	

May	Tu	W	Th	F	Sa	Su	M	Tu	W	Th	F	Sa	Su	M	Tu	W	Th	F	Sa	Su	M	Tu	W	Th							
2018	1	2	3	4	5	6	7	8	9	10	11	12	13	14	15	16	17	18	19	20	21	22	23	24	25	26	27	28	29	30	31
	-	-	-	-	-	-	-	-	-	-	-	-	-	-	-	-	-	-	-	-	-	-	-	-	-	-	-	-	-	-	

June	F	Sa	Su	M	Tu	W	Th	F	Sa	Su	M	Tu	W	Th	F	Sa	Su	M	Tu	W	Th	F	Sa							
2018	1	2	3	4	5	6	7	8	9	10	11	12	13	14	15	16	17	18	19	20	21	22	23	24	25	26	27	28	29	30
	-	-	-	-	-	-	-	-	-	-	-	-	-	-	-	-	-	-	-	-	-	-	-	-	-	-	-	-	-	

Jul	Su	M	Tu	W	Th	F	Sa	Su	M	Tu	W	Th	F	Sa	Su	M	Tu	W	Th	F	Sa	Su	M	Tu							
2018	1	2	3	4	5	6	7	8	9	10	11	12	13	14	15	16	17	18	19	20	21	22	23	24	25	26	27	28	29	30	31
	-	-	-	-	-	-	-	-	-	-	-	-	-	-	-	-	-	-	-	-	-	-	-	-	-	-	-	-	-	-	

 Reserved



Vacation rental  
Zeewolde - Netherlands  
"Bij Het Bos"

9

[Book now](#)

Availability calendar - from : july 2018





Aug	W	Th	F	Sa	Su	M	Tu	W	Th	F	Sa	Su	M	Tu	W	Th	F	Sa	Su	M	Tu	W	Th	F	Sa	Su	M	Tu	W	Th	F
2018	1	2	3	4	5	6	7	8	9	10	11	12	13	14	15	16	17	18	19	20	21	22	23	24	25	26	27	28	29	30	31
-	-	-	-	-	-	-	-	-	-	-	-	-	-	-	-	-	-	-	-	-	-	-	-	-	-	-	-	-	-	-	-

Sep	Sa	Su	M	Tu	W	Th	F	Sa	Su	M	Tu	W	Th	F	Sa	Su	M	Tu	W	Th	F	Sa	Su							
2018	1	2	3	4	5	6	7	8	9	10	11	12	13	14	15	16	17	18	19	20	21	22	23	24	25	26	27	28	29	30
-	-	-	-	-	-	-	-	-	-	-	-	-	-	-	-	-	-	-	-	-	-	-	-	-	-	-	-	-	-	-

Reserved

[Month : Next >>](#)

Rental rates - Villa - from 8 to 16 Person(s)

Rates	Night	Weekend	week	2 weeks	Month
 Low season	-	\$528* (Friday)	\$762*	-	-
 Mid season	-	\$704* (Friday)	\$1056*	-	-
 High season	-	\$798* (Friday)	\$1173*	-	-
 Festive specials	-	\$880*	-	-	-

(Check-in day)

[Book now](#)

Booking conditions

• Reservation

- Payment made upon reservation : 50% of rental sum
- Payment balance : 1 month before the stay
- Deposit required : \$176\*

• rentals

- Service charges to be added
- Day tax in addition
- Cleaning charge levy on departure : \$111\*

[▶ Book now](#)

[▶ Contact the owner](#)

Accepted methods of payment

- Bank transfer (wire)
- PayPal

Contact directly the property owners

[www.iha.com](http://www.iha.com)  
Advert No.  
10228  
[>> Book now <<](#)

Contact

Spoken languages



\* Converted at the rate indicated : €100 = \$117.29 = £89.59

Advert No. 10228

[www.iha.com](http://www.iha.com)



[>> VACATION HOMES](#)

DIRECT BY OWNERS