

Bed and Breakfast Heule "De Vlaschaerd"

In this 19th century flax-factory 2 roteputten were converted into a charming stay for up to 4 people and 2 apartments for 2 x 6 persons.



Theme breaks
Nature discovery

Charming Converted Warehouse,
detached, single storey, separate
entrance, in(on) a(an) Private property

Setting : enchanting, agricultural

Guest Room(s) : 3

- Charming Old Store "De Vlaschaerd"
4 person(s)
- Charming Studio Flat "Cottage"
5 person(s)
- Maisonette "Vintage"
4 person(s)

Heule - West Flanders - Flanders

Belgium

Reservation : +32 (0) 56 25 66 27 (Belgium)

Advert No. 68238

www.ihacom



Bed and Breakfast



Charming Converted Warehouse, detached, single storey, separate entrance, in(on) a(an) Private property

- **View** : panoramic, unobscured, country side, swimming pool, farmland, village
- **Setting** : enchanting, agricultural

" In the B&B you have all the comfort: small furnished kitchen, living room, TV, video, internet, bathroom. Outside you have a spacious terrace overlooking the fields. There is a trampoline, pétanque Court, basketball goal, football goal and you can use the family swimming pool. Parking in front of the building on a large car park. At the end of september 2014 we will propose 2 other furnished apartments. Both with 2 separate bedrooms with 1 bathroom for 2 x 6 people. "

Assets

- **Swimming pool** :
Private swimming pool, rectangular (length 36', width 15'), heated, illuminated, steps in (open from 'may 15' till 'september 30')
- **Parking** :
Parking uncovered : 4 off road.
- **Advantages** :
Pétanque field, 4 bike(s)
- **baby equipment** :
High chair, comfort station, stroller

Surroundings & location



Countryside



Horse riding



Culture

" The B&B is quietly located on the rural outskirts of the city of Kortrijk. You can immediately connect to one of the many marked bicycle routes. Furthermore, the accommodation is ideally located for a visit to these cities: Ieper, Bruges, Ghent, Lille, Brussels and Antwerp. Also a day coast belongs to the possibilities. "

Leisure

- **Leisure activities less than 12 miles** :

Bathing, windsurfing, sailing, tennis, riding school, flying (club), boat trips, RC aeromodelling field, fishing, pétanque field

Surroundings

- **Locality** :

Heated swimming pool

Exterior

- Exterior facilities at guests disposal :
Terrace, covered terrace, sundeck
- Outside at the guests disposal :
Enclosed grounds, yard
- Exterior amenities at guests disposal :
Yard table(s), yard seat(s), trolley on wheels

Interior

- Receive up to :
3 Guest Room(s)
- Interior comforts at guests disposal :
T.V., computer, internet access

Services

- **Restauration :**
Breakfast
- **washing :**
Sheets, Towels
- **Single family home :**
Cleaning, Yard/swimming pool maintenance,
Parking

For your guidance

- **For your guidance**
Kids welcome
Pets friendly
Present on site : pets
Non smoking rental
Water : hot/cold
Local voltage supply : 110-120V / 60Hz
- **Handicapped people welcome**
Wheelchair access

Charming Old Store "De Vlaschaerd"



4 person(s) : 2 adults - 2 kids



bathroom

•Interior layout and facilities :

Sleeping den, 1 bathroom, 1 shower room, living room, separate kitchen

•Sleeps - bed(s) :

4 twin bed(s), 1 baby cradle

•View :

Panoramic, unobscured, country side, swimming pool, village

•Exposure :

South-west

•Facilities exclusive to :

Separate entrance, private swimming pool, courtesy car

•Guest facilities and furnishings :

T.V., mini-bar, electric coffee maker, electric kettle, phone, internet access, electric hobs, micro-wave oven, hair dryer, refrigerator, central heating, Drapes

•baby equipment :

High chair, stroller

•Exterior private facilities :

Terrace, covered terrace, sundeck, BBQ, yard table(s), 4 yard seat(s)



interior



interior



Charming Studio Flat "Cottage"



5 person(s) : 3 adults - 2 kids

Liveable floor area : 1,300 Sq.ft.



● **Interior layout and facilities :**

Shared toilets facilities, sleeping den, 1 shower room, living room 215 Sq.ft., american style kitchen

● **Sleeps - bed(s) :**

1 full bed(s), 1 twin bed(s), 1 bunk beds

● **View :**

Not overlooked, swimming pool

● **Facilities exclusive to :**

Separate entrance, ping-pong table, courtesy car, SUV vehicle

● **Guest facilities and furnishings :**

T.V., electric coffee maker, electric kettle, cable/

satelite, electric hobs, wifi, micro-wave oven, refridgerator, central heating, Drapes

● **baby equipment :**

Playpen



Charming Studio Flat

Maisonette "Vintage"



4 person(s) : 2 adults - 2 kids

Liveable floor area : 1,300 Sq.ft.



Maisonette

● **Interior layout and facilities :**

Shared shower room, sleeping den, living room 215 Sq.ft., american style kitchen

● **Sleeps - bed(s) :**

4 twin bed(s)

● **View :**

Not overlooked, swimming pool

● **Exposure :**

South-west

● **Guest facilities and furnishings :**

T.V., electric coffee maker, electric kettle, cable/satelite, electric hobs, wifi, micro-wave oven, refridgerator, central heating, Drapes

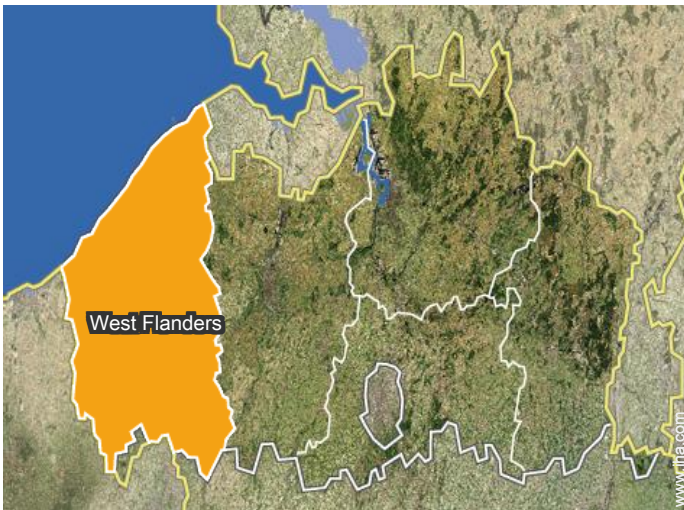
● **baby equipment :**

Playpen

[Theme breaks](#)

Nature discovery

Location



Location & Access



GPS coordinates in degrees, minutes, seconds: Latitude 50°52'18"N - Longitude 3°13'29"E ([Dwelling](#))

Address

→ Sentestraat 99
8501 Heule

• **Freeway (exit) Courtrai**

→ Kortrijk, West Flanders, Flanders,
Belgium

→ Distance : 1.85mi.

- Kortrijk : (1.5mi.)
- Ypres : (18.5mi.)
- Ghent : (28mi.)

Contact

Spoken
languages



Bed and Breakfast West Flanders - Flanders "De Vlaschaerd"

[Book now](#)

Availability calendar - from : march 2018

Mar	Th	F	Sa	Su	M	Tu	W	Th	F	Sa	Su	M	Tu	W	Th	F	Sa	Su	M	Tu	W	Th	F	Sa	Su	M	Tu	W	Th	F	Sa
2018	1	2	3	4	5	6	7	8	9	10	11	12	13	14	15	16	17	18	19	20	21	22	23	24	25	26	27	28	29	30	31
1																			-	-	-	-	-	-	-	-	-	-	-	-	
2																			-	-	-	-	-	-	-	-	-	-	-	-	
3																			-	-	-	-	-	-	-	-	-	-	-	-	

Apr	Su	M	Tu	W	Th	F	Sa	Su	M	Tu	W	Th	F	Sa	Su	M	Tu	W	Th	F	Sa	Su	M	Tu	W	Th	F	Sa	Su	M
2018	1	2	3	4	5	6	7	8	9	10	11	12	13	14	15	16	17	18	19	20	21	22	23	24	25	26	27	28	29	30
1	-	-	-	-	-	-	-	-	-	-	-	-	-	-	-	-	-	-	-	-	-	-	-	-	-	-	-	-	-	
2	-	-	-	-	-	-	-	-	-	-	-	-	-	-	-	-	-	-	-	-	-	-	-	-	-	-	-	-	-	
3	-	-	-	-	-	-	-	-	-	-	-	-	-	-	-	-	-	-	-	-	-	-	-	-	-	-	-	-	-	

May	Tu	W	Th	F	Sa	Su	M	Tu	W	Th	F	Sa	Su	M	Tu	W	Th	F	Sa	Su	M	Tu	W	Th	F	Sa	Su	M	Tu	W	Th
2018	1	2	3	4	5	6	7	8	9	10	11	12	13	14	15	16	17	18	19	20	21	22	23	24	25	26	27	28	29	30	31
1	-	-	-	-	-	-	-	-	-	-	-	-	-	-	-	-	-	-	-	-	-	-	-	-	-	-	-	-	-	-	
2	-	-	-	-	-	-	-	-	-	-	-	-	-	-	-	-	-	-	-	-	-	-	-	-	-	-	-	-	-	-	
3	-	-	-	-	-	-	-	-	-	-	-	-	-	-	-	-	-	-	-	-	-	-	-	-	-	-	-	-	-	-	

June	F	Sa	Su	M	Tu	W	Th	F	Sa	Su	M	Tu	W	Th	F	Sa	Su	M	Tu	W	Th	F	Sa	Su	M	Tu	W	Th	F	Sa
2018	1	2	3	4	5	6	7	8	9	10	11	12	13	14	15	16	17	18	19	20	21	22	23	24	25	26	27	28	29	30
1	-	-	-	-	-	-	-	-	-	-	-	-	-	-	-	-	-	-	-	-	-	-	-	-	-	-	-	-	-	
2	-	-	-	-	-	-	-	-	-	-	-	-	-	-	-	-	-	-	-	-	-	-	-	-	-	-	-	-	-	
3	-	-	-	-	-	-	-	-	-	-	-	-	-	-	-	-	-	-	-	-	-	-	-	-	-	-	-	-	-	

Jul	Su	M	Tu	W	Th	F	Sa	Su	M	Tu	W	Th	F	Sa	Su	M	Tu	W	Th	F	Sa	Su	M	Tu	W	Th	F	Sa	Su	M	Tu
2018	1	2	3	4	5	6	7	8	9	10	11	12	13	14	15	16	17	18	19	20	21	22	23	24	25	26	27	28	29	30	31
1	-	-	-	-	-	-	-	-	-	-	-	-	-	-	-	-	-	-	-	-	-	-	-	-	-	-	-	-	-	-	
2	-	-	-	-	-	-	-	-	-	-	-	-	-	-	-	-	-	-	-	-	-	-	-	-	-	-	-	-	-	-	
3	-	-	-	-	-	-	-	-	-	-	-	-	-	-	-	-	-	-	-	-	-	-	-	-	-	-	-	-	-	-	

Aug	W	Th	F	Sa	Su	M	Tu	W	Th	F	Sa	Su	M	Tu	W	Th	F	Sa	Su	M	Tu	W	Th	F	Sa	Su	M	Tu	W	Th	F
2018	1	2	3	4	5	6	7	8	9	10	11	12	13	14	15	16	17	18	19	20	21	22	23	24	25	26	27	28	29	30	31
1	-	-	-	-	-	-	-	-	-	-	-	-	-	-	-	-	-	-	-	-	-	-	-	-	-	-	-	-	-	-	
2	-	-	-	-	-	-	-	-	-	-	-	-	-	-	-	-	-	-	-	-	-	-	-	-	-	-	-	-	-	-	
3	-	-	-	-	-	-	-	-	-	-	-	-	-	-	-	-	-	-	-	-	-	-	-	-	-	-	-	-	-	-	

- 1** Charming Old Store "De Vlaschaerd" - 4 person(s)
- 2** Charming Studio Flat "Cottage" - 5 person(s)
- 3** Maisonette "Vintage" - 4 person(s)



Bed and Breakfast Heule - Belgium "De Vlaschaerd"

9

[Book now](#)

Availability calendar - from : august 2018

Sep	Sa	Su	M	Tu	W	Th	F	Sa	Su	M	Tu	W	Th	F	Sa	Su	M	Tu	W	Th	F	Sa	Su	M	Tu	W	Th	F	Sa	Su
2018	1	2	3	4	5	6	7	8	9	10	11	12	13	14	15	16	17	18	19	20	21	22	23	24	25	26	27	28	29	30
1	-	-	-	-	-	-	-	-	-	-	-	-	-	-	-	-	-	-	-	-	-	-	-	-	-	-	-	-	-	-
2	-	-	-	-	-	-	-	-	-	-	-	-	-	-	-	-	-	-	-	-	-	-	-	-	-	-	-	-	-	-
3	-	-	-	-	-	-	-	-	-	-	-	-	-	-	-	-	-	-	-	-	-	-	-	-	-	-	-	-	-	-

Oct	M	Tu	W	Th	F	Sa	Su	M	Tu	W	Th	F	Sa	Su	M	Tu	W	Th	F	Sa	Su	M	Tu	W	Th	F	Sa	Su	M	Tu	W
2018	1	2	3	4	5	6	7	8	9	10	11	12	13	14	15	16	17	18	19	20	21	22	23	24	25	26	27	28	29	30	31
1	-	-	-	-	-	-	-	-	-	-	-	-	-	-	-	-	-	-	-	-	-	-	-	-	-	-	-	-	-	-	-
2	-	-	-	-	-	-	-	-	-	-	-	-	-	-	-	-	-	-	-	-	-	-	-	-	-	-	-	-	-	-	-
3	-	-	-	-	-	-	-	-	-	-	-	-	-	-	-	-	-	-	-	-	-	-	-	-	-	-	-	-	-	-	-

Nov	Th	F	Sa	Su	M	Tu	W	Th	F	Sa	Su	M	Tu	W	Th	F	Sa	Su	M	Tu	W	Th	F	Sa	Su	M	Tu	W	Th	F
2018	1	2	3	4	5	6	7	8	9	10	11	12	13	14	15	16	17	18	19	20	21	22	23	24	25	26	27	28	29	30
1	-	-	-	-	-	-	-	-	-	-	-	-	-	-	-	-	-	-	-	-	-	-	-	-	-	-	-	-	-	-
2	-	-	-	-	-	-	-	-	-	-	-	-	-	-	-	-	-	-	-	-	-	-	-	-	-	-	-	-	-	-
3	-	-	-	-	-	-	-	-	-	-	-	-	-	-	-	-	-	-	-	-	-	-	-	-	-	-	-	-	-	-

Dec	Sa	Su	M	Tu	W	Th	F	Sa	Su	M	Tu	W	Th	F	Sa	Su	M	Tu	W	Th	F	Sa	Su	M	Tu	W	Th	F	Sa	Su	M
2018	1	2	3	4	5	6	7	8	9	10	11	12	13	14	15	16	17	18	19	20	21	22	23	24	25	26	27	28	29	30	31
1	-	-	-	-	-	-	-	-	-	-	-	-	-	-	-	-	-	-	-	-	-	-	-	-	-	-	-	-	-	-	-
2	-	-	-	-	-	-	-	-	-	-	-	-	-	-	-	-	-	-	-	-	-	-	-	-	-	-	-	-	-	-	-
3	-	-	-	-	-	-	-	-	-	-	-	-	-	-	-	-	-	-	-	-	-	-	-	-	-	-	-	-	-	-	-

Jan	Tu	W	Th	F	Sa	Su	M	Tu	W	Th	F	Sa	Su	M	Tu	W	Th	F	Sa	Su	M	Tu	W	Th	F	Sa	Su	M	Tu	W	Th
2019	1	2	3	4	5	6	7	8	9	10	11	12	13	14	15	16	17	18	19	20	21	22	23	24	25	26	27	28	29	30	31
1	-	-	-	-	-	-	-	-	-	-	-	-	-	-	-	-	-	-	-	-	-	-	-	-	-	-	-	-	-	-	-
2	-	-	-	-	-	-	-	-	-	-	-	-	-	-	-	-	-	-	-	-	-	-	-	-	-	-	-	-	-	-	-
3	-	-	-	-	-	-	-	-	-	-	-	-	-	-	-	-	-	-	-	-	-	-	-	-	-	-	-	-	-	-	-

Feb	F	Sa	Su	M	Tu	W	Th	F	Sa	Su	M	Tu	W	Th	F	Sa	Su	M	Tu	W	Th							
2019	1	2	3	4	5	6	7	8	9	10	11	12	13	14	15	16	17	18	19	20	21	22	23	24	25	26	27	28
1	-	-	-	-	-	-	-	-	-	-	-	-	-	-	-	-	-	-	-	-	-	-	-	-	-	-	-	-
2	-	-	-	-	-	-	-	-	-	-	-	-	-	-	-	-	-	-	-	-	-	-	-	-	-	-	-	-
3	-	-	-	-	-	-	-	-	-	-	-	-	-	-	-	-	-	-	-	-	-	-	-	-	-	-	-	-

- 1** Charming Old Store "De Vlaschaerd" - 4 person(s)
- 2** Charming Studio Flat "Cottage" - 5 person(s)
- 3** Maisonette "Vintage" - 4 person(s)

[Month : Next >>](#)

Bed and Breakfast
Flanders - Heule
"De Vlaschaerd"

10
[Book now](#)

Rental rates "De Vlaschaerd"

Bed and Breakfast Rates			Night	Weekend	week	2 weeks	Month
1 Charming Old Store "De Vlaschaerd" 4 person(s) (2 adults - 2 kids) 		\$95* > 2	-	-	-	-	
		\$99* > 2	-	-	-	-	
2 Charming Studio Flat "Cottage" 5 person(s) (3 adults - 2 kids) 		-	-	-	-	-	
		-	-	-	-	-	
3 Maisonette "Vintage" 4 person(s) (2 adults - 2 kids) 		-	-	-	-	-	
		-	-	-	-	-	

 Low season
  High season

> Minimum Night

[Book now](#)

Booking conditions

• Reservation

→ Payment made upon reservation : 30% of rental sum

• rentals

→ Service charges included
→ Day tax included
→ Cleaning charge on departure included

Accepted methods of payment

• Bank transfer (wire) • Cash

[▶ Book now](#)

[▶ Contact the owner](#)

Contact directly the property owners

www.iha.com
Advert No.
68238
[>> Book now <<](#)

Contact

Spoken languages



* Converted at the rate indicated : €100 = \$123.46 = £88.94

Advert No. 68238

www.iha.com



[>> VACATION HOMES](#)

DIRECT BY OWNERS