

# Bed and Breakfast Merkem "De paprente"

The B&B is located between Ypres and Diksmuide. Really centrally located to visit the Westhoek and the history of the 1st World war.



Meublés de Tourisme (1 star)

**Apartment-Flat** 2nd floor, separate entrance, in(on) a(an) House 1 floor

Setting : pleasant, rural

Guest Room(s) : 1

Receive up to : **from 1 to 6 guests**

- Studio Flat "De paprente"  
4 person(s)

Merkem - West Flanders - Flanders

Belgium

Advert No. 48000

Reservation : +32 (0) 498104150 (Belgium)

www.iha.com



>> VACATION HOMES

DIRECT BY OWNERS

## Bed and Breakfast



Apartment-Flat 2nd floor, separate entrance, in(on) a(an) House 1 floor

- Ideal for senior(s), couples
- View : country side, garden/park, farmland, forest, village
- Setting : pleasant, rural

" After a day visiting The Westhoek you can enjoy pleasant on the spacious private terrace, equipped with garden furniture and sun loungers. The B&B is located in a quiet rural turn. In the distance one can see the Yzertoren and the water reserve The Bailey. Our Merkemse pride: Beukelaere Molen you can no longer see, only the remains, he will soon be restored. "

## Assets

- baby equipment :  
High chair, infant tub, playpen



view from the bedroom

## Surroundings & location



Countryside



Fishing

" The coast, the hill country, Ieper, Diksmuide, Veurne, Kortrijk, Bruges are at max. one hour from us. Go hiking in the wooded area: The Bailey, the forest houthulst. Cycling ..... is certainly one of the possibilities. Or just by car or moto tour before and after front of WWI; the many new roads are extremely suitable; You can rent a motorbike through us (by appointment) to spend a day to discover the Westhoek ( package: Elsie and Mairi, Angels of Flanders Fields). "

### Leisure

- Leisure activities less than 12 miles :

Pedalo, pathway/broadwalk, coastal/forest paths, hiking, horse-drawn carriage, horse trekking, fishing

### Surroundings

- Locality :

Heated swimming pool 6mi.  
Sea/ocean 18.5mi.  
Public swimming pool 6mi.  
9 hole golf course 9mi.  
Forest 2.5mi.  
Marina 6mi.



Kitchen Area



living room



Interior layout at guests disposal

### Interior

- Receive up to :  
from 1 to 6 guests, 1 Guest Room(s)
- Liveable floor area :  
380 Sq.ft.
- Interior comforts at guests disposal :  
T.V., crockery/flatware, DVD player, board games, computer, cable/satelite, radio alarmclock, mobile cool air fan, central heating



mezzanine

### Exterior

- Exterior facilities at guests disposal :  
Roof terrace 270 Sq.ft., gazebo
- Outside at the guests disposal :  
Private courtyard, enclosed grounds, yard 2,150 Sq.ft., lawn 270 Sq.ft., kitchen garden 4,300 Sq.ft.
- Exterior amenities at guests disposal :  
BBQ, yard table(s), yard seat(s), trolley on wheels, parasol, yard seated area, chaise(s) longue(s)

### Services

- Restauration :  
Breakfast supplement (+\$9\*)
- washing :  
Sheets, Towels, Linen, Comforter(s), Pillows
- Single family home :  
Cleaning on departure supplement (+\$35\*),  
Parking

### For your guidance

- For your guidance  
Kids welcome  
Pets accepted under certain conditions (ask the owner)  
Present on site : pets, farm animals  
Non smoking rental  
Water : hot/cold  
Local voltage supply : 220V / 60Hz  
Electricity supply : mains
- Handicapped people welcome  
Fitted out for the disabled : hard of hearing, mentally



dining area

Studio Flat "De paprente"



4 person(s) : 2 adults - 2 kids

Liveable floor area : 380 Sq.ft.

**Ideal for couples**

•Interior layout and facilities :

Sleeping den, 1 shower room, 1 toilets, sitting room, american style kitchen, dining area, mezzanine, tv den

•Sleeps - bed(s) :

2 full bed(s), 1 foldaway bed(s) 2 pers, 2 baby cradle

•View :

Panoramic, country side, garden/park, courtyard, village, monument

•Facilities exclusive to :

Separate entrance

•Guest facilities and furnishings :

T.V., mini-bar, electric coffee maker, DVD player, electric kettle, board games, phone, computer, cable/satelite, electric hobs, wifi, oven, wardrobe, cupboard, micro-wave oven, radio alarmclock, hair dryer, refridgerator, fly screens, mobile cool air fan, electric heating, skylights, Drapes

•baby equipment :

High chair, baby potty, playpen



dining area



kitchen



sleeping area



sitting room



view from the bedroom

Photo album - 1



House



view from the bedroom



living room



Kitchen Area

Photo album - 2



dining area



Interior layout at guests disposal



mezzanine



view from the apartment

[Favourite photo gallery - 1](#)



June 2011



June 2011



June 2011



June 2011



June 2011

[Favourite photo gallery - 2](#)



June 2011



June 2011



June 2011



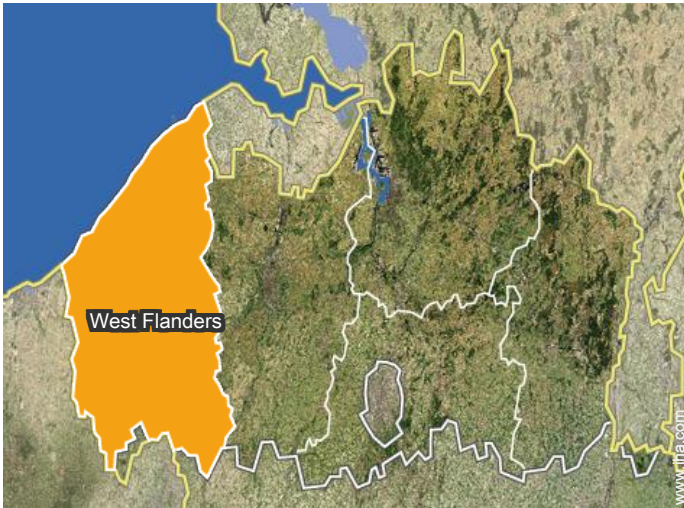
June 2011



June 2011



### Location



### Location & Access

" Follow the motorway to Ieper, exit in the direction of Diksmuide. About 10 to 11 km turn left, follow direction Merkem, past the Church, 500 m. "



GPS coordinates in degrees, minutes, seconds: Latitude 50°57'32"N - Longitude 2°50'47"E (Dwelling)

#### Address

→ Westbroekstraat 80  
8650 Merkem

#### • Freeway (exit) A17

→ Ypres, West Flanders, Flanders, Belgium  
→ Distance : 7mi.  
→ Time : 15'

- Diksmuide : (6mi.)
- Ypres : (7,5mi.)
- Roeselare : (15.5mi.)

### Contact

Spoken languages



# Bed and Breakfast Flanders - Merkem "De paprente"

10  
[Book now](#)

Availability calendar - from : january 2018

Jan	M	Tu	W	Th	F	Sa	Su	M	Tu	W	Th	F	Sa	Su	M	Tu	W	Th	F	Sa	Su	M	Tu	W	Th	F	Sa	Su	M	Tu	W
2018	1	2	3	4	5	6	7	8	9	10	11	12	13	14	15	16	17	18	19	20	21	22	23	24	25	26	27	28	29	30	31
1																						-	-	-	-	-	-	-	-	-	-

Feb	Th	F	Sa	Su	M	Tu	W	Th	F	Sa	Su	M	Tu	W	Th	F	Sa	Su	M	Tu	W								
2018	1	2	3	4	5	6	7	8	9	10	11	12	13	14	15	16	17	18	19	20	21	22	23	24	25	26	27	28	
1	-	-	-	-	-	-	-	-	-	-	-	-	-	-	-	-	-	-	-	-	-	-	-	-	-	-	-	-	-

Mar	Th	F	Sa	Su	M	Tu	W	Th	F	Sa	Su	M	Tu	W	Th	F	Sa	Su	M	Tu	W	Th	F	Sa							
2018	1	2	3	4	5	6	7	8	9	10	11	12	13	14	15	16	17	18	19	20	21	22	23	24	25	26	27	28	29	30	31
1	-	-	-	-	-	-	-	-	-	-	-	-	-	-	-	-	-	-	-	-	-	-	-	-	-	-	-	-	-	-	

Apr	Su	M	Tu	W	Th	F	Sa	Su	M	Tu	W	Th	F	Sa	Su	M	Tu	W	Th	F	Sa	Su	M							
2018	1	2	3	4	5	6	7	8	9	10	11	12	13	14	15	16	17	18	19	20	21	22	23	24	25	26	27	28	29	30
1	-	-	-	-	-	-	-	-	-	-	-	-	-	-	-	-	-	-	-	-	-	-	-	-	-	-	-	-	-	-

May	Tu	W	Th	F	Sa	Su	M	Tu	W	Th	F	Sa	Su	M	Tu	W	Th	F	Sa	Su	M	Tu	W	Th							
2018	1	2	3	4	5	6	7	8	9	10	11	12	13	14	15	16	17	18	19	20	21	22	23	24	25	26	27	28	29	30	31
1	-	-	-	-	-	-	-	-	-	-	-	-	-	-	-	-	-	-	-	-	-	-	-	-	-	-	-	-	-	-	

June	F	Sa	Su	M	Tu	W	Th	F	Sa	Su	M	Tu	W	Th	F	Sa	Su	M	Tu	W	Th	F	Sa							
2018	1	2	3	4	5	6	7	8	9	10	11	12	13	14	15	16	17	18	19	20	21	22	23	24	25	26	27	28	29	30
1	-	-	-	-	-	-	-	-	-	-	-	-	-	-	-	-	-	-	-	-	-	-	-	-	-	-	-	-	-	-

Jul	Su	M	Tu	W	Th	F	Sa	Su	M	Tu	W	Th	F	Sa	Su	M	Tu	W	Th	F	Sa	Su	M	Tu							
2018	1	2	3	4	5	6	7	8	9	10	11	12	13	14	15	16	17	18	19	20	21	22	23	24	25	26	27	28	29	30	31
1	-	-	-	-	-	-	-	-	-	-	-	-	-	-	-	-	-	-	-	-	-	-	-	-	-	-	-	-	-	-	

Aug	W	Th	F	Sa	Su	M	Tu	W	Th	F	Sa	Su	M	Tu	W	Th	F	Sa	Su	M	Tu	W	Th	F							
2018	1	2	3	4	5	6	7	8	9	10	11	12	13	14	15	16	17	18	19	20	21	22	23	24	25	26	27	28	29	30	31
1	-	-	-	-	-	-	-	-	-	-	-	-	-	-	-	-	-	-	-	-	-	-	-	-	-	-	-	-	-	-	

Sep	Sa	Su	M	Tu	W	Th	F	Sa	Su	M	Tu	W	Th	F	Sa	Su	M	Tu	W	Th	F	Sa	Su							
2018	1	2	3	4	5	6	7	8	9	10	11	12	13	14	15	16	17	18	19	20	21	22	23	24	25	26	27	28	29	30
1	-	-	-	-	-	-	-	-	-	-	-	-	-	-	-	-	-	-	-	-	-	-	-	-	-	-	-	-	-	-

Oct	M	Tu	W	Th	F	Sa	Su	M	Tu	W	Th	F	Sa	Su	M	Tu	W	Th	F	Sa	Su	M	Tu	W							
2018	1	2	3	4	5	6	7	8	9	10	11	12	13	14	15	16	17	18	19	20	21	22	23	24	25	26	27	28	29	30	31
1	-	-	-	-	-	-	-	-	-	-	-	-	-	-	-	-	-	-	-	-	-	-	-	-	-	-	-	-	-	-	

# Bed and Breakfast West Flanders - Merkem "De paprente"

11  
[Book now](#)





## Availability calendar - from : october 2018

Nov	Th	F	Sa	Su	M	Tu	W	Th	F	Sa	Su	M	Tu	W	Th	F	Sa	Su	M	Tu	W	Th	F	Sa	Su	M	Tu	W	Th	F
2018	1	2	3	4	5	6	7	8	9	10	11	12	13	14	15	16	17	18	19	20	21	22	23	24	25	26	27	28	29	30
1	-	-	-	-	-	-	-	-	-	-	-	-	-	-	-	-	-	-	-	-	-	-	-	-	-	-	-	-	-	-

Dec	Sa	Su	M	Tu	W	Th	F	Sa	Su	M	Tu	W	Th	F	Sa	Su	M	Tu	W	Th	F	Sa	Su	M							
2018	1	2	3	4	5	6	7	8	9	10	11	12	13	14	15	16	17	18	19	20	21	22	23	24	25	26	27	28	29	30	31
1	-	-	-	-	-	-	-	-	-	-	-	-	-	-	-	-	-	-	-	-	-	-	-	-	-	-	-	-	-	-	

[Month : Next >>](#)

## Rental rates "De paprente"

Bed and Breakfast Rates		Night	Weekend	week	2 weeks	Month
1	Studio Flat "De paprente" 4 person(s) (2 adults - 2 kids)	\$70*	\$135* (Friday)	\$352* (Saturday)	-	-
		\$70*	\$135* (Friday)	\$352* (Saturday)	-	-
		\$76*	\$141* (Friday)	\$358* (Saturday)	-	-
	Low season		Mid season		High season	
(Check-in day)						

[Book now](#)

## Booking conditions

### • Reservation

- Payment made upon reservation : 50% of rental sum
- Payment balance : on handing over the keys
- Deposit required : \$59\*

### • rentals

- Day tax included
- Cleaning charge levy on departure : \$35\*
- Anticipated supplement for : - supplementary bed(s)

[▶ Book now](#)

[▶ Contact the owner](#)

## Accepted methods of payment

- Bank transfer (wire) • Cash

Contact directly the property owners

[www.iha.com](http://www.iha.com)  
Advert No.  
48000  
[>> Book now <<](#)

## Contact

Spoken languages



\* Converted at the rate indicated : €100 = \$117.29 = £89.59

Advert No. 48000

[www.iha.com](http://www.iha.com)



[>> VACATION HOMES](#)

DIRECT BY OWNERS