

Bed and Breakfast Olinda "Olindapart"

You want to stay at Olinda for a few days or for a long time? We offer our studios.



Charming House, detached, 1 floor,
separate entrance

Setting : historical, tropical

Guest Room(s) : 5

Receive up to : from 1 to 14
guests

- Studio Flat "Pitanga"
4 person(s)
- Studio Flat "Caja"
3 person(s)
- Studio Flat "Manga"
2 person(s)
- Studio Flat "Carambola"
2 person(s)
- Studio Flat "Melancia"
3 person(s)

Olinda - Pernambuco (PE) - North East Region

Brazil

Reservation : +55 (81) 34294183 (Brazil)

Advert No. 38680

www.iha.com



Bed and Breakfast



Charming House, detached, 1 floor, separate entrance

- **Ideal for all age groups, singles**
- View : garden/park
- Setting : historical, tropical
- Exposure : South

" With simplicity and comfort, the House is organized in rooms equipped with a bathroom, a kitchenette with hob and fridge, table-top, and an independent entrance. We have paid particular attention to the individual comfort of guests with: Wifi Internet on request, hot shower, ceiling fan, and air conditioning. Sheets and towels are provided. weekly cleaning. A key artistic and original decorates every room in the House. You can use the paint shop. Ede can tell you the best artists for courses of paint, paper mache, sculptures, etc... and Portuguese language. Welcome to our House. We wish you an excellent stay in Olinda. "

Surroundings & location



Ocean



Fishing



Festival



Culture

" Olinda and his madness of the Carnival, one of the most popular of the Brazil. Founded in 1517, Olinda is one of the oldest cities of the Brazil. Its narrow, winding streets are lined with small colorful houses and a multitude of churches and monasteries. No samba, in Olinda: dance the famous frevo. A style of music generally played by a procession of drums: maracatu. And then there's all the artists: painters, sculptors... "

Leisure

- **Leisure activities less than 12 miles :**
Bathing, scuba diving, jet ski, sailing, fishing

Surroundings

- **Locality :**
Sea/ocean
Sandy beach

Bed and Breakfast
Olinda - Brazil
"Olindapart"

3

[Book now](#)

Exterior

- Ground surface :
4,300 Sq.ft.
- Exterior facilities at guests disposal :
Terrace, covered terrace, balcony
- Outside at the guests disposal :
Private courtyard, enclosed grounds, yard, tropical garden
- Exterior amenities at guests disposal :
Yard table(s)

Interior

- Receive up to :
from 1 to 14 guests, 5 Guest Room(s)
- Liveable floor area :
3,300 Sq.ft.
- Interior comforts at guests disposal :
Crockery/flatware, wifi, ceiling paddle fan

Services

- Restauration :
Breakfast
- washing :
Sheets, Towels, Linen, Pillows
- Single family home :
Cleaning supplement (1 X / per week +\$6*),
Cleaning on departure
- Personnel :
Chauffeur supplement, Laundry supplement

For your guidance

- For your guidance
Kids welcome
Non smoking rental, cell phone network coverage, alcohol not permitted
Water : hot/cold
Local voltage supply : 220-240V / 50Hz
Electricity supply : mains

Advert No. 38680

www.iha.com



>> VACATION HOMES

DIRECT BY OWNERS

Studio Flat "Pitanga"



4 person(s) : 4 adults

Liveable floor area : 345 Sq.ft.

Ideal for group



shower room

• **Interior layout and facilities :**

1 shower room, 1 toilets, kitchenette, dining area

• **Sleeps - bed(s) :**

1 full bed(s), 2 twin bed(s)

• **Guest facilities and furnishings :**

Electric hobs, wifi, wardrobe, Hanging wardrobe, refridgerator, fully air-conditioned, mobile cool air fan, Glazed in area, Drapes

Studio Flat "Caja"



3 person(s) : 3 adults

Liveable floor area : 323 Sq.ft.

Ideal for couples with baby

• **Interior layout and facilities :**

1 shower room, 1 toilets, kitchenette, dining area, patio

• **Sleeps - bed(s) :**

1 full bed(s), 1 twin storage bed 1 pers

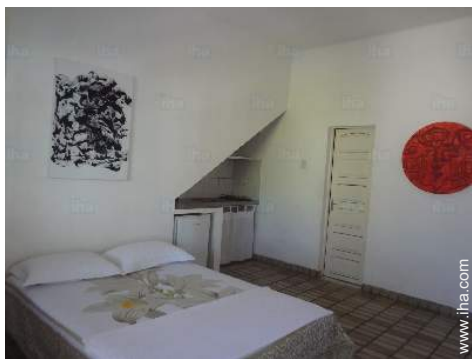
• **View :**

Sea/ocean

• **Guest facilities and furnishings :**

Hanging wardrobe, refridgerator, fully air-conditioned, mobile cool air fan

Studio Flat "Manga"



2 person(s) : 2 adults

Liveable floor area : 300 Sq.ft.

•Interior layout and facilities :

1 shower room, 1 toilets, kitchenette, dining area

•Sleeps - bed(s) :

1 full bed(s)

•View :

Sea/ocean

•Guest facilities and furnishings :

Electric hobs, wifi, refridgerator, fully air-conditioned, mobile cool air fan

Studio Flat "Carambola"



2 person(s) : 2 adults

Liveable floor area : 300 Sq.ft.

Ideal for couples with baby

•Interior layout and facilities :

1 shower room, 1 toilets, kitchenette, dining area

•Sleeps - bed(s) :

1 full bed(s)

•View :

Not overlooked

•Facilities exclusive to :

Separate entrance

•Guest facilities and furnishings :

Electric hobs, wifi, Hanging wardrobe, refridgerator, fully air-conditioned, mobile cool air fan, Drapes

Studio Flat "Melancia"



3 person(s)

• Interior layout and facilities :

1 shower room, 1 toilets, kitchenette, dining area, loggia

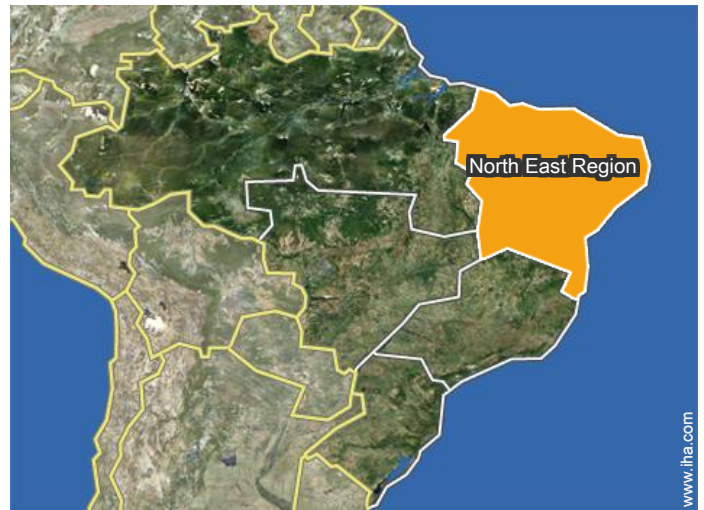
• Sleeps - bed(s) :

1 full bed(s), 1 twin bed(s)

• Guest facilities and furnishings :

Electric hobs, wifi, wardrobe, cupboard, Hanging wardrobe, refridgerator, fully air-conditioned, ceiling paddle fan, Drapes

Location



Location & Access

"Colonial House, located in a residential area of the historic site of Olinda, heritage of humanity, surrounded by trees, with a pleasant garden, a large terrace collective. And well served by public transport and taxis."



GPS coordinates in degrees, minutes, seconds: Latitude 8°1'7"S - Longitude 34° 51'2"W (Dwelling)

Address

→ 10 de novembro 93

● [Airport Recife Guararapes Gilberto Freyre](#)

→ Recife, Pernambuco, North East Region, Brazil

→ Distance : 9mi.

→ Time : 30'

● Recife : (7,5mi.)

Contact

Spoken languages



Bed and Breakfast Pernambuco - North East Region "Olindapart"

[Book now](#)

Availability calendar - from : december 2018

Dec	Sa	Su	M	Tu	W	Th	F	Sa	Su	M	Tu	W	Th	F	Sa	Su	M	Tu	W	Th	F	Sa	Su	M							
2018	1	2	3	4	5	6	7	8	9	10	11	12	13	14	15	16	17	18	19	20	21	22	23	24	25	26	27	28	29	30	31
1																															
2																															
3																															
4																															
5																															

Jan	Tu	W	Th	F	Sa	Su	M	Tu	W	Th	F	Sa	Su	M	Tu	W	Th	F	Sa	Su	M	Tu	W	Th							
2019	1	2	3	4	5	6	7	8	9	10	11	12	13	14	15	16	17	18	19	20	21	22	23	24	25	26	27	28	29	30	31
1	-	-	-	-	-	-	-	-	-	-	-	-	-	-	-	-	-	-	-	-	-	-	-	-	-	-	-	-	-		
2	-	-	-	-	-	-	-	-	-	-	-	-	-	-	-	-	-	-	-	-	-	-	-	-	-	-	-	-	-		
3	-	-	-	-	-	-	-	-	-	-	-	-	-	-	-	-	-	-	-	-	-	-	-	-	-	-	-	-	-		
4	-	-	-	-	-	-	-	-	-	-	-	-	-	-	-	-	-	-	-	-	-	-	-	-	-	-	-	-	-		
5	-	-	-	-	-	-	-	-	-	-	-	-	-	-	-	-	-	-	-	-	-	-	-	-	-	-	-	-	-		

Feb	F	Sa	Su	M	Tu	W	Th	F	Sa	Su	M	Tu	W	Th	F	Sa	Su	M	Tu	W	Th							
2019	1	2	3	4	5	6	7	8	9	10	11	12	13	14	15	16	17	18	19	20	21	22	23	24	25	26	27	28
1	-	-	-	-	-	-	-	-	-	-	-	-	-	-	-	-	-	-	-	-	-	-	-	-	-	-	-	
2	-	-	-	-	-	-	-	-	-	-	-	-	-	-	-	-	-	-	-	-	-	-	-	-	-	-	-	
3	-	-	-	-	-	-	-	-	-	-	-	-	-	-	-	-	-	-	-	-	-	-	-	-	-	-	-	
4	-	-	-	-	-	-	-	-	-	-	-	-	-	-	-	-	-	-	-	-	-	-	-	-	-	-	-	
5	-	-	-	-	-	-	-	-	-	-	-	-	-	-	-	-	-	-	-	-	-	-	-	-	-	-	-	

Mar	F	Sa	Su	M	Tu	W	Th	F	Sa	Su	M	Tu	W	Th	F	Sa	Su	M	Tu	W	Th	F	Sa	Su							
2019	1	2	3	4	5	6	7	8	9	10	11	12	13	14	15	16	17	18	19	20	21	22	23	24	25	26	27	28	29	30	31
1	-	-	-	-	-	-	-	-	-	-	-	-	-	-	-	-	-	-	-	-	-	-	-	-	-	-	-	-			
2	-	-	-	-	-	-	-	-	-	-	-	-	-	-	-	-	-	-	-	-	-	-	-	-	-	-	-	-			
3	-	-	-	-	-	-	-	-	-	-	-	-	-	-	-	-	-	-	-	-	-	-	-	-	-	-	-	-			
4	-	-	-	-	-	-	-	-	-	-	-	-	-	-	-	-	-	-	-	-	-	-	-	-	-	-	-	-			
5	-	-	-	-	-	-	-	-	-	-	-	-	-	-	-	-	-	-	-	-	-	-	-	-	-	-	-	-			

Apr	M	Tu	W	Th	F	Sa	Su	M	Tu	W	Th	F	Sa	Su	M	Tu	W	Th	F	Sa	Su	M	Tu							
2019	1	2	3	4	5	6	7	8	9	10	11	12	13	14	15	16	17	18	19	20	21	22	23	24	25	26	27	28	29	30
1	-	-	-	-	-	-	-	-	-	-	-	-	-	-	-	-	-	-	-	-	-	-	-	-	-	-	-	-		
2	-	-	-	-	-	-	-	-	-	-	-	-	-	-	-	-	-	-	-	-	-	-	-	-	-	-	-	-		
3	-	-	-	-	-	-	-	-	-	-	-	-	-	-	-	-	-	-	-	-	-	-	-	-	-	-	-	-		
4	-	-	-	-	-	-	-	-	-	-	-	-	-	-	-	-	-	-	-	-	-	-	-	-	-	-	-	-		
5	-	-	-	-	-	-	-	-	-	-	-	-	-	-	-	-	-	-	-	-	-	-	-	-	-	-	-	-		

- Studio Flat "Melancia" - 3 person(s)
- Studio Flat "Carambola" - 2 person(s)
- Studio Flat "Caja" - 3 person(s)
- Studio Flat "Pitanga" - 4 person(s)
- Studio Flat "Manga" - 2 person(s)

Mid season Reserved



Bed and Breakfast
Olinda - Brazil
"Olindapart"

[Book now](#)

Availability calendar - from : april 2019

May	W	Th	F	Sa	Su	M	Tu	W	Th	F	Sa	Su	M	Tu	W	Th	F	Sa	Su	M	Tu	W	Th	F	Sa	Su	M	Tu	W	Th	F
2019	1	2	3	4	5	6	7	8	9	10	11	12	13	14	15	16	17	18	19	20	21	22	23	24	25	26	27	28	29	30	31
1	-	-	-	-	-	-	-	-	-	-	-	-	-	-	-	-	-	-	-	-	-	-	-	-	-	-	-	-	-	-	-
2	-	-	-	-	-	-	-	-	-	-	-	-	-	-	-	-	-	-	-	-	-	-	-	-	-	-	-	-	-	-	-
3	-	-	-	-	-	-	-	-	-	-	-	-	-	-	-	-	-	-	-	-	-	-	-	-	-	-	-	-	-	-	-
4	-	-	-	-	-	-	-	-	-	-	-	-	-	-	-	-	-	-	-	-	-	-	-	-	-	-	-	-	-	-	-
5	-	-	-	-	-	-	-	-	-	-	-	-	-	-	-	-	-	-	-	-	-	-	-	-	-	-	-	-	-	-	-

June	Sa	Su	M	Tu	W	Th	F	Sa	Su	M	Tu	W	Th	F	Sa	Su	M	Tu	W	Th	F	Sa	Su	M	Tu	W	Th	F	Sa	Su
2019	1	2	3	4	5	6	7	8	9	10	11	12	13	14	15	16	17	18	19	20	21	22	23	24	25	26	27	28	29	30
1	-	-	-	-	-	-	-	-	-	-	-	-	-	-	-	-	-	-	-	-	-	-	-	-	-	-	-	-	-	-
2	-	-	-	-	-	-	-	-	-	-	-	-	-	-	-	-	-	-	-	-	-	-	-	-	-	-	-	-	-	-
3	-	-	-	-	-	-	-	-	-	-	-	-	-	-	-	-	-	-	-	-	-	-	-	-	-	-	-	-	-	-
4	-	-	-	-	-	-	-	-	-	-	-	-	-	-	-	-	-	-	-	-	-	-	-	-	-	-	-	-	-	-
5	-	-	-	-	-	-	-	-	-	-	-	-	-	-	-	-	-	-	-	-	-	-	-	-	-	-	-	-	-	-

Jul	M	Tu	W	Th	F	Sa	Su	M	Tu	W	Th	F	Sa	Su	M	Tu	W	Th	F	Sa	Su	M	Tu	W	Th	F	Sa	Su	M	Tu	W
2019	1	2	3	4	5	6	7	8	9	10	11	12	13	14	15	16	17	18	19	20	21	22	23	24	25	26	27	28	29	30	31
1	-	-	-	-	-	-	-	-	-	-	-	-	-	-	-	-	-	-	-	-	-	-	-	-	-	-	-	-	-	-	-
2	-	-	-	-	-	-	-	-	-	-	-	-	-	-	-	-	-	-	-	-	-	-	-	-	-	-	-	-	-	-	-
3	-	-	-	-	-	-	-	-	-	-	-	-	-	-	-	-	-	-	-	-	-	-	-	-	-	-	-	-	-	-	-
4	-	-	-	-	-	-	-	-	-	-	-	-	-	-	-	-	-	-	-	-	-	-	-	-	-	-	-	-	-	-	-
5	-	-	-	-	-	-	-	-	-	-	-	-	-	-	-	-	-	-	-	-	-	-	-	-	-	-	-	-	-	-	-

Aug	Th	F	Sa	Su	M	Tu	W	Th	F	Sa	Su	M	Tu	W	Th	F	Sa	Su	M	Tu	W	Th	F	Sa	Su	M	Tu	W	Th	F	Sa
2019	1	2	3	4	5	6	7	8	9	10	11	12	13	14	15	16	17	18	19	20	21	22	23	24	25	26	27	28	29	30	31
1	-	-	-	-	-	-	-	-	-	-	-	-	-	-	-	-	-	-	-	-	-	-	-	-	-	-	-	-	-	-	-
2	-	-	-	-	-	-	-	-	-	-	-	-	-	-	-	-	-	-	-	-	-	-	-	-	-	-	-	-	-	-	-
3	-	-	-	-	-	-	-	-	-	-	-	-	-	-	-	-	-	-	-	-	-	-	-	-	-	-	-	-	-	-	-
4	-	-	-	-	-	-	-	-	-	-	-	-	-	-	-	-	-	-	-	-	-	-	-	-	-	-	-	-	-	-	-
5	-	-	-	-	-	-	-	-	-	-	-	-	-	-	-	-	-	-	-	-	-	-	-	-	-	-	-	-	-	-	-

Sep	Su	M	Tu	W	Th	F	Sa	Su	M	Tu	W	Th	F	Sa	Su	M	Tu	W	Th	F	Sa	Su	M	Tu	W	Th	F	Sa	Su	M
2019	1	2	3	4	5	6	7	8	9	10	11	12	13	14	15	16	17	18	19	20	21	22	23	24	25	26	27	28	29	30
1	-	-	-	-	-	-	-	-	-	-	-	-	-	-	-	-	-	-	-	-	-	-	-	-	-	-	-	-	-	-
2	-	-	-	-	-	-	-	-	-	-	-	-	-	-	-	-	-	-	-	-	-	-	-	-	-	-	-	-	-	-
3	-	-	-	-	-	-	-	-	-	-	-	-	-	-	-	-	-	-	-	-	-	-	-	-	-	-	-	-	-	-
4	-	-	-	-	-	-	-	-	-	-	-	-	-	-	-	-	-	-	-	-	-	-	-	-	-	-	-	-	-	-
5	-	-	-	-	-	-	-	-	-	-	-	-	-	-	-	-	-	-	-	-	-	-	-	-	-	-	-	-	-	-

- 1 Studio Flat "Melancia" - 3 person(s)
- 2 Studio Flat "Pitanga" - 4 person(s)
- 3 Studio Flat "Carambola" - 2 person(s)
- 4 Studio Flat "Manga" - 2 person(s)
- 5 Studio Flat "Caja" - 3 person(s)

 Mid season Reserved



Bed and Breakfast North East Region - Olinda "Olindapart"

10
[Book now](#)

Availability calendar - from : september 2019

Oct	Tu	W	Th	F	Sa	Su	M	Tu	W	Th	F	Sa	Su	M	Tu	W	Th	F	Sa	Su	M	Tu	W	Th	F	Sa	Su	M	Tu	W	Th
2019	1	2	3	4	5	6	7	8	9	10	11	12	13	14	15	16	17	18	19	20	21	22	23	24	25	26	27	28	29	30	31
1	-	-	-	-	-	-	-	-	-	-	-	-	-	-	-	-	-	-	-	-	-	-	-	-	-	-	-	-	-	-	-
2	-	-	-	-	-	-	-	-	-	-	-	-	-	-	-	-	-	-	-	-	-	-	-	-	-	-	-	-	-	-	-
3	-	-	-	-	-	-	-	-	-	-	-	-	-	-	-	-	-	-	-	-	-	-	-	-	-	-	-	-	-	-	-
4	-	-	-	-	-	-	-	-	-	-	-	-	-	-	-	-	-	-	-	-	-	-	-	-	-	-	-	-	-	-	-
5	-	-	-	-	-	-	-	-	-	-	-	-	-	-	-	-	-	-	-	-	-	-	-	-	-	-	-	-	-	-	-




Nov	F	Sa	Su	M	Tu	W	Th	F	Sa	Su	M	Tu	W	Th	F	Sa	Su	M	Tu	W	Th	F	Sa	Su	M	Tu	W	Th	F	Sa
2019	1	2	3	4	5	6	7	8	9	10	11	12	13	14	15	16	17	18	19	20	21	22	23	24	25	26	27	28	29	30
1	-	-	-	-	-	-	-	-	-	-	-	-	-	-	-	-	-	-	-	-	-	-	-	-	-	-	-	-	-	-
2	-	-	-	-	-	-	-	-	-	-	-	-	-	-	-	-	-	-	-	-	-	-	-	-	-	-	-	-	-	-
3	-	-	-	-	-	-	-	-	-	-	-	-	-	-	-	-	-	-	-	-	-	-	-	-	-	-	-	-	-	-
4	-	-	-	-	-	-	-	-	-	-	-	-	-	-	-	-	-	-	-	-	-	-	-	-	-	-	-	-	-	-
5	-	-	-	-	-	-	-	-	-	-	-	-	-	-	-	-	-	-	-	-	-	-	-	-	-	-	-	-	-	-

- 1 Studio Flat "Melancia" - 3 person(s)
- 2 Studio Flat "Pitanga" - 4 person(s)
- 3 Studio Flat "Carambola" - 2 person(s)
- 4 Studio Flat "Manga" - 2 person(s)
- 5 Studio Flat "Caja" - 3 person(s)



Mid season
 Reserved


[Month : Next >>](#)

Rental rates "Olindapart"

Bed and Breakfast Rates			Night	Weekend	week	2 weeks	Month
1	Studio Flat "Melancia" 3 person(s)		\$35*	-	\$193*	\$359*	\$616*
2	Studio Flat "Pitanga" 4 person(s) (4 adults)		\$40*	-	\$230*	\$432*	\$740*
3	Studio Flat "Carambola" 2 person(s) (2 adults)		\$27*	-	\$152*	\$287*	\$493*

Rental rates "Olindapart"

Bed and Breakfast Rates			Night	Weekend	week	2 weeks	Month
4	Studio Flat "Manga" 2 person(s) (2 adults)		\$27*	-	\$152*	\$287*	\$493*
5	Studio Flat "Caja" 3 person(s) (3 adults)		\$35*	-	\$193*	\$359*	\$616*

 Low season

[Book now](#)

Booking conditions

• Reservation

- Payment made upon reservation : 50% of rental sum
- Payment balance : on handing over the keys
- Deposit required : \$117*

• rentals

- Service charges to be added
- Anticipated supplement for : - supplementary bed(s)

[▶ Book now](#)

[▶ Contact the owner](#)

Accepted methods of payment

- International Money Order • Bank transfer (wire) • PayPal • Travellers Cheques • Cash

Contact directly the property owners

www.iha.com
Advert No.
38680
[>> Book now <<](#)

Contact

Spoken languages



* Converted at the rate indicated : €100 = \$116.85 = £89

Advert No. 38680

www.iha.com

